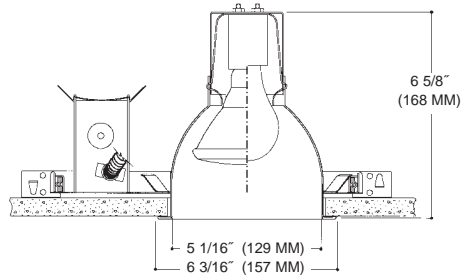


## SHALLOW OPEN REFLECTOR



Aperture: 5 1/16", Ceiling Cutout: 5 1/4", OD: 6 3/16"

### Housing

**Part #**      **Description**  
**V500** - 5" Shallow 75W Max. Incandescent

**Suitable Lamp Types:**

**A19/A21, BR40, Par16/Par20/Par30**

### Trim

**Part #**      **Description**  
**VS510SPCL** - Specular Clear Alzak® Reflector  
**VS510SPGO** - Specular Gold Alzak® Reflector  
**VS510SPWT** - Specular Wheat Alzak® Reflector  
**VS510SPPW** - Specular Pewter Alzak® Reflector  
**VS510SPUM** - Specular Umber Alzak® Reflector  
**VS510SPBL** - Specular Black Alzak® Reflector  
**VS510WH** - Matte White Reflector

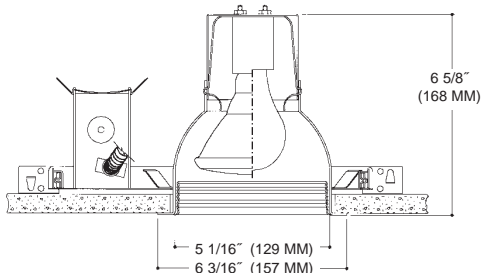
**More Color Options Available See Page 6**  
**Factory Standard is a Low Iridescent Alzak® finish**  
**Alzak® is a registered trademark of ALCOA**

### Accessories

**ST277** - Step Down Transformer (277:115)      **CB517** - Caddy Bars (517)  
**FS** - Fuse      **CB520** - Caddy Bars (520)  
**RM** - Old Work Remodeler Housing



## SHALLOW OPEN BAFFLE REFLECTOR



Aperture: 5 1/16", Ceiling Cutout: 5 1/4", OD: 6 3/16"

### Housing

**Part #**      **Description**  
**V500** - 5" Shallow 75W Max. Incandescent

**Suitable Lamp Types:**

**A19/A21, BR40, Par16/Par20/Par30**

### Trim

**Part #**      **Description**  
**Black Multi-Groove Baffle**  
**VS521SPCL** - Specular Clear Alzak® Reflector  
**VS521SPGO** - Specular Gold Alzak® Reflector  
**VS521WH** - Matte White Reflector  
**White Multi-Groove Baffle**  
**VS522SPCL** - Specular Clear Alzak® Reflector  
**VS522SPGO** - Specular Gold Alzak® Reflector  
**VS522WH** - Matte White Reflector

**More Color Options Available See Page 6**  
**Factory Standard is a Low Iridescent Alzak® finish**  
**Alzak® is a registered trademark of ALCOA**

### Accessories

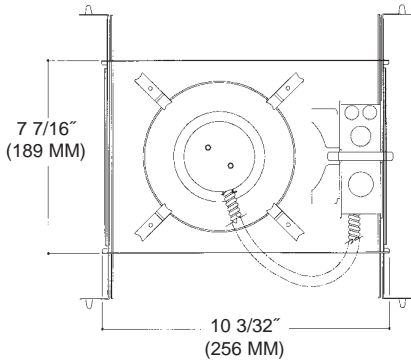
**ST277** - Step Down Transformer (277:115)      **CB517** - Caddy Bars (517)  
**FS** - Fuse      **CB520** - Caddy Bars (520)  
**RM** - Old Work Remodeler Housing



5"

Vertical Shallow Incandescent (Par / A Lamp)

### 5" Vertical Shallow Incandescent

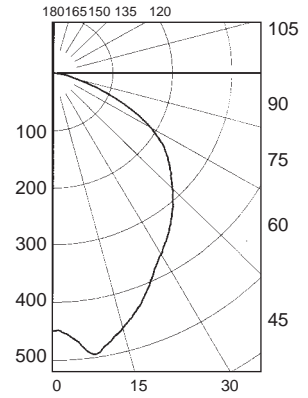


**Frame**  
**V500**

**Reflector**  
**VS510SPCL**

**LTL Test # 11285**

**Efficiency:** 69.2%  
**Total Lumens:** 1710  
**Lamp Source:** 1x100W  
GE100A Standard A19



— 0 Deg. Plane    - - - 90 Deg. Plane

#### Coefficients of Utilization

| RC | 80 |    |    |    | 70 |    |    |    | 50 |    |    |    | 30 |    |    |    | 10 |    |    |    | 0  |    |    |  |
|----|----|----|----|----|----|----|----|----|----|----|----|----|----|----|----|----|----|----|----|----|----|----|----|--|
| RW | 70 | 50 | 30 | 10 | 70 | 50 | 30 | 10 | 50 | 30 | 10 | 50 | 30 | 10 | 50 | 30 | 10 | 50 | 30 | 10 | 50 | 30 | 10 |  |
| 0  | 82 | 82 | 82 | 82 | 80 | 80 | 80 | 80 | 77 | 77 | 77 | 74 | 74 | 74 | 71 | 71 | 71 | 69 |    |    |    |    |    |  |
| 1  | 77 | 74 | 71 | 69 | 75 | 72 | 70 | 68 | 69 | 67 | 66 | 67 | 65 | 64 | 64 | 63 | 62 | 61 |    |    |    |    |    |  |
| 2  | 71 | 66 | 62 | 58 | 69 | 65 | 61 | 58 | 62 | 59 | 56 | 60 | 57 | 55 | 58 | 56 | 54 | 53 |    |    |    |    |    |  |
| 3  | 65 | 59 | 54 | 50 | 64 | 58 | 53 | 49 | 56 | 52 | 49 | 54 | 51 | 48 | 52 | 49 | 47 | 46 |    |    |    |    |    |  |
| 4  | 60 | 53 | 47 | 43 | 59 | 52 | 47 | 43 | 50 | 46 | 42 | 49 | 45 | 42 | 47 | 44 | 41 | 40 |    |    |    |    |    |  |
| 5  | 55 | 47 | 42 | 37 | 54 | 47 | 41 | 37 | 45 | 40 | 37 | 44 | 40 | 36 | 43 | 39 | 36 | 35 |    |    |    |    |    |  |
| 6  | 51 | 43 | 37 | 33 | 50 | 42 | 36 | 32 | 41 | 36 | 32 | 40 | 35 | 32 | 38 | 35 | 32 | 30 |    |    |    |    |    |  |
| 7  | 47 | 38 | 32 | 28 | 46 | 38 | 32 | 28 | 37 | 32 | 28 | 36 | 31 | 28 | 35 | 31 | 28 | 26 |    |    |    |    |    |  |
| 8  | 44 | 35 | 29 | 25 | 43 | 34 | 29 | 25 | 33 | 28 | 25 | 32 | 28 | 25 | 32 | 28 | 25 | 23 |    |    |    |    |    |  |
| 9  | 40 | 31 | 26 | 22 | 40 | 31 | 26 | 22 | 30 | 25 | 22 | 30 | 25 | 22 | 29 | 25 | 22 | 21 |    |    |    |    |    |  |
| 10 | 38 | 29 | 23 | 20 | 37 | 28 | 23 | 20 | 28 | 23 | 20 | 27 | 23 | 20 | 26 | 22 | 19 | 18 |    |    |    |    |    |  |

#### Cone of Light

| Ft below | FC nadir | Dia @ 50% |
|----------|----------|-----------|
| 6.0      | 12.5     | 7.3       |
| 8.0      | 7.0      | 9.7       |
| 10.0     | 4.5      | 12.1      |
| 12.0     | 3.1      | 14.5      |
| 14.0     | 2.3      | 17.0      |
| 16.0     | 1.8      | 19.4      |

#### Frame Options

**CFM** - Custom Frame Modifications (*consult factory*)

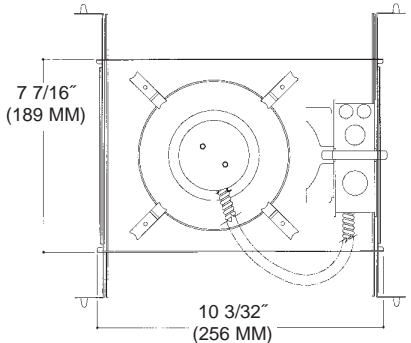
\*\* - specify slope degrees in 5° increments up to 45°

#### Trim Options

- PFL** - Polish Flange
- TLP** - Top Re-lamp Modifications
- FGSK** - Flange Gasket
- GR** - Goof Ring\*

\* - specify I.D. and O.D. standard white finish

### 5" Vertical Shallow Incandescent

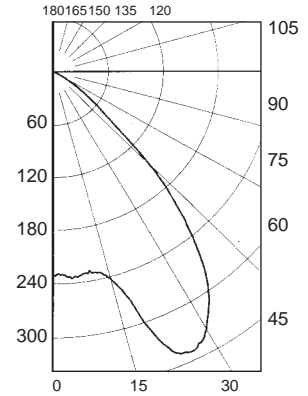


**Frame**  
**V500**

**Reflector**  
**VS521SPCL**

**LTL Test # 11286**

**Efficiency:** 34.1%  
**Total Lumens:** 1710  
**Lamp Source:** 1x100W  
GE 100A Standard A19



— 0 Deg. Plane    - - - 90 Deg. Plane

#### Coefficients of Utilization

| RC | 80 |    |    |    | 70 |    |    |    | 50 |    |    |    | 30 |    |    |    | 10 |    |    |    | 0  |    |    |  |
|----|----|----|----|----|----|----|----|----|----|----|----|----|----|----|----|----|----|----|----|----|----|----|----|--|
| RW | 70 | 50 | 30 | 10 | 70 | 50 | 30 | 10 | 50 | 30 | 10 | 50 | 30 | 10 | 50 | 30 | 10 | 50 | 30 | 10 | 50 | 30 | 10 |  |
| 0  | 41 | 41 | 41 | 41 | 40 | 40 | 40 | 40 | 38 | 38 | 38 | 36 | 36 | 36 | 35 | 35 | 35 | 34 |    |    |    |    |    |  |
| 1  | 38 | 37 | 37 | 36 | 38 | 37 | 36 | 35 | 35 | 35 | 34 | 34 | 34 | 33 | 33 | 32 | 32 | 31 |    |    |    |    |    |  |
| 2  | 36 | 35 | 33 | 32 | 36 | 34 | 33 | 32 | 33 | 32 | 31 | 32 | 31 | 30 | 31 | 30 | 30 | 29 |    |    |    |    |    |  |
| 3  | 34 | 32 | 30 | 29 | 34 | 31 | 30 | 28 | 31 | 29 | 28 | 30 | 29 | 28 | 29 | 28 | 27 | 27 |    |    |    |    |    |  |
| 4  | 32 | 30 | 27 | 26 | 32 | 29 | 27 | 26 | 28 | 27 | 25 | 28 | 26 | 25 | 27 | 26 | 25 | 24 |    |    |    |    |    |  |
| 5  | 30 | 27 | 25 | 23 | 30 | 27 | 25 | 23 | 26 | 24 | 23 | 26 | 24 | 23 | 25 | 24 | 23 | 22 |    |    |    |    |    |  |
| 6  | 28 | 25 | 23 | 21 | 28 | 25 | 23 | 21 | 24 | 22 | 21 | 24 | 22 | 21 | 23 | 22 | 21 | 20 |    |    |    |    |    |  |
| 7  | 26 | 23 | 20 | 19 | 26 | 23 | 20 | 19 | 22 | 20 | 19 | 22 | 20 | 19 | 21 | 20 | 18 | 18 |    |    |    |    |    |  |
| 8  | 25 | 21 | 18 | 17 | 24 | 21 | 18 | 17 | 20 | 18 | 17 | 20 | 18 | 17 | 19 | 18 | 17 | 16 |    |    |    |    |    |  |
| 9  | 23 | 19 | 17 | 15 | 22 | 19 | 16 | 15 | 18 | 16 | 15 | 18 | 16 | 15 | 18 | 16 | 15 | 14 |    |    |    |    |    |  |
| 10 | 21 | 17 | 15 | 13 | 21 | 17 | 15 | 13 | 17 | 15 | 13 | 16 | 15 | 13 | 16 | 14 | 13 | 13 |    |    |    |    |    |  |

#### Cone of Light

| Ft below | FC nadir | Dia @ 50% |
|----------|----------|-----------|
|----------|----------|-----------|

#### Frame Options

**CFM** - Custom Frame Modifications (*consult factory*)

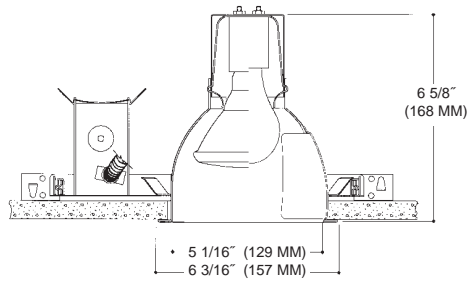
\*\* - specify slope degrees in 5° increments up to 45°

#### Trim Options

- PFL** - Polish Flange
- TLP** - Top Re-lamp Modifications
- FGSK** - Flange Gasket
- GR** - Goof Ring\*

\* - specify I.D. and O.D. standard white finish

## SHALLOW OPEN WALL WASH REFLECTOR



Aperture: 5 1/16", Ceiling Cutout: 5 1/4", OD: 6 3/16"

### Housing

| Part #                           | Description                      |
|----------------------------------|----------------------------------|
| V500                             | 5" Shallow 75W Max. Incandescent |
| <b>Suitable Lamp Types:</b>      |                                  |
| A19/A21, BR40, Par16/Par20/Par30 |                                  |

### Trim

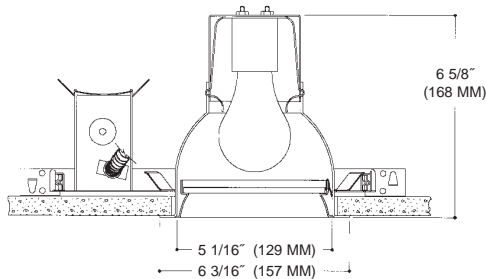
| Part #   | Description                               |
|--|---|
| <b>Single Wall Wash</b>                                    |   |
| VS580SPCL  | - Specular Clear <i>Alzak</i> ® Reflector |
| VS580SPGO  | - Specular Gold <i>Alzak</i> ® Reflector  |
| VS580WH  | - Matte White Reflector                   |
| <b>Double Wall Wash</b>                                    |   |
| VS581SPCL  | - Specular Clear <i>Alzak</i> ® Reflector |
| VS581SPGO  | - Specular Gold <i>Alzak</i> ® Reflector  |
| VS581WH  | - Matte White Reflector                   |
| More Color Options Available See Page 6                    |   |
| Factory Standard is a Low Iridescent <i>Alzak</i> ® finish |   |
| <i>Alzak</i> ® is a registered trademark of ALCOA          |   |

### Accessories

|       |                                   |       |                    |
|-------|-----------------------------------|-------|--------------------|
| ST277 | - Step Down Transformer (277:115) | CB517 | - Caddy Bars (517) |
| FS    | - Fuse                            | CB520 | - Caddy Bars (520) |
| RM    | - Old Work Remodeler Housing      |       |                    |



## SHALLOW ENCLOSED LENS REFLECTOR



Aperture: 5 1/16", Ceiling Cutout: 5 1/4", OD: 6 3/16"

### Housing

| Part #                      | Description                      |
|-----------------------------|----------------------------------|
| V500                        | 5" Shallow 60W Max. Incandescent |
| <b>Suitable Lamp Types:</b> |                                  |
| A19, BR40, Par16/Par20      |                                  |

### Trim

| Part #   | Description                               |
|--|---|
| <b>C73 Prismatic Lens</b>                                  |   |
| VS530SPCL  | - Specular Clear <i>Alzak</i> ® Reflector |
| VS530WH  | - Matte White Splay                       |
| <b>Fresnel Lens</b>  |   |
| VS532SPCL  | - Specular Clear <i>Alzak</i> ® Reflector |
| VS532WH  | - Matte White Splay                       |
| More Color Options Available See Page 6                    |   |
| Factory Standard is a Low Iridescent <i>Alzak</i> ® finish |   |
| <i>Alzak</i> ® is a registered trademark of ALCOA          |   |

### Accessories

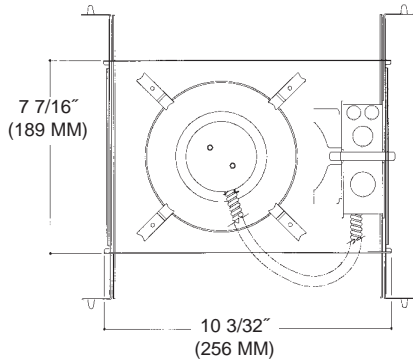
|       |                                   |       |                    |
|-------|-----------------------------------|-------|--------------------|
| ST277 | - Step Down Transformer (277:115) | CB517 | - Caddy Bars (517) |
| FS    | - Fuse                            | CB520 | - Caddy Bars (520) |
| RM    | - Old Work Remodeler Housing      |       |                    |



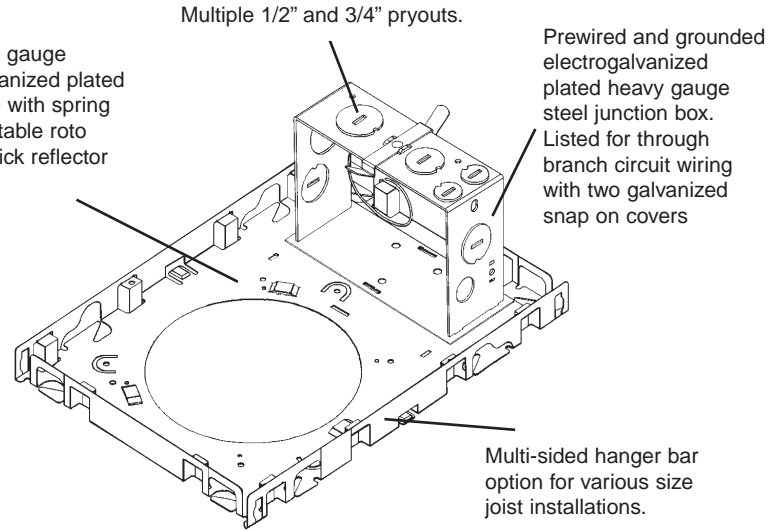
5"

Vertical Shallow Incandescent (Par / A-Lamp)

### 5" Vertical Shallow Incandescent



Heavy, .027 gauge electrogalvanized plated steel frame with spring steel adjustable roto clips for quick reflector installation.



#### Frame Options

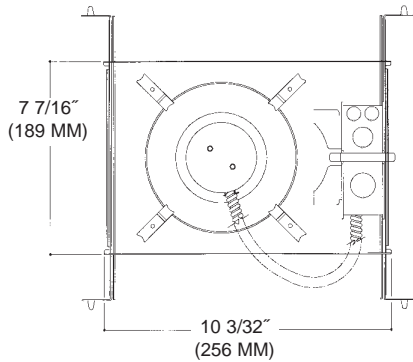
**CFM** - Custom Frame Modifications (*consult factory*)

#### Trim Options

- PFL** - Polish Flange
- TLP** - Top Re-lamp Modifications
- FGSK** - Flange Gasket
- GR** - Goof Ring\*

\* - specify I.D. and O.D. standard white finish

### 5" Vertical Shallow Incandescent



#### Additional Product Info

##### Reflector

Single piece hand spun low iridescent Alzak® reflector with standard self trim flange and a white trim finish. 45° Lamp cutoff allows for a better visual cutoff than generally available. High polish flange, white and black trim finish's available consult factory.

##### Socket

Aluminum, heat dissipating socket cup vertically mounts to reflector by means of a firm locking adjustable husk clip. UL Listed, porcelain medium base socket.

##### Frame

Prewired electrogalvanized heavy steel junction box listed for through branch circuit wiring with 1/2" & 3/4" pryouts. Electrogalvanized plated steel housing with adjustable spring steel roto clips allowing for a quick trim installation.

Thermally protected 120V thermal cutout factory wired.

Housing accommodates any ceilings with a max. thickness of 1 3/4"

Same housing accommodates an open, lens, or wall wash reflector.

#### Frame Options

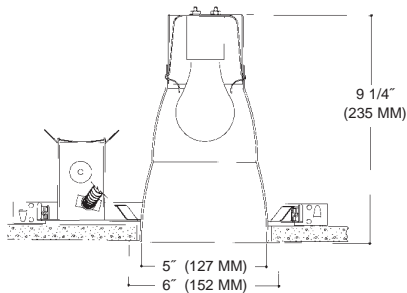
**CFM** - Custom Frame Modifications (*consult factory*)

#### Trim Options

- PFL** - Polish Flange
- TLP** - Top Re-lamp Modifications
- FGSK** - Flange Gasket
- GR** - Goof Ring\*

\* - specify I.D. and O.D. standard white finish

## MAXIMUM WATTAGE OPEN REFLECTOR



Aperture: 5", Ceiling Cutout: 5 1/4", OD: 6"

Single piece hand spun low iridescent *Alzak*® reflector with 45° cutoff to lamp. Factory standard self trim flange with a white finish

Prewired electrogalvanized heavy steel junction box listed for through branch circuit wiring with 1/2" & 3/4" pryouts.

Electrogalvanized plated steel housing with adjustable spring steel roto clips allowing for a quick trim installation.

UL listed thermal protector cutout.

**Ceiling insulation must be kept 3" away from housing.**

**Listed for damp locations and wet locations under covered canopy.**

### Housing

| Part # | Description                    |
|--------|--------------------------------|
| V500   | 5" Tall 100W Max. Incandescent |

#### Suitable Lamp Types:

A19/A21, BR40, Par16/Par20/Par30

### Trim

| Part #   | Description                                |
|----------|--|
| V510SPCL | - Specular Clear <i>Alzak</i> ® Reflector  |
| V510SPGO | - Specular Gold <i>Alzak</i> ® Reflector   |
| V510SPWT | - Specular Wheat <i>Alzak</i> ® Reflector  |
| V510SPPW | - Specular Pewter <i>Alzak</i> ® Reflector |
| V510SPUM | - Specular Umber <i>Alzak</i> ® Reflector  |
| V510SPBL | - Specular Black <i>Alzak</i> ® Reflector  |
| V510WH   | - Matte White Reflector                    |

More Color Options Available See Page 6

Factory Standard is a Low Iridescent *Alzak*® finish

*Alzak*® is a registered trademark of ALCOA

#### Accessories

ST277 - Step Down Transformer (277:115)

FS - Fuse

RM - Old Work Remodeler Housing

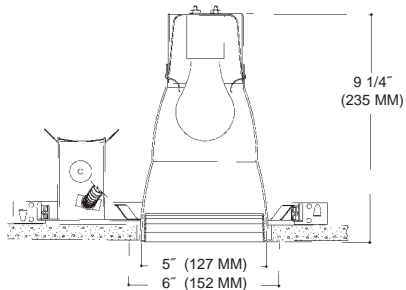
CB517 - Caddy Bars (517)

CB520 - Caddy Bars (520)



Tested and Listed to ETL/UL standard 1598 and CSA standards.

## MAXIMUM WATTAGE OPEN BAFFLE REFLECTOR



Aperture: 5", Ceiling Cutout: 5 1/4", OD: 6"

Single piece hand spun low iridescent *Alzak*® reflector with 45° cutoff to lamp. Factory standard self trim flange with a white finish

Prewired electrogalvanized heavy steel junction box listed for through branch circuit wiring with 1/2" & 3/4" pryouts.

Electrogalvanized plated steel housing with adjustable spring steel roto clips allowing for a quick trim installation.

UL listed thermal protector cutout.

**Ceiling insulation must be kept 3" away from housing.**

**Listed for damp locations and wet locations under covered canopy.**

### Housing

| Part # | Description                    |
|--------|--------------------------------|
| V500   | 5" Tall 100W Max. Incandescent |

#### Suitable Lamp Types:

A19/A21, BR40, Par16/Par20/Par30

### Trim

| Part #                           | Description                               |
|----------------------------------|---|
| <b>Black Multi-Groove Baffle</b> |   |
| V521SPCL                         | - Specular Clear <i>Alzak</i> ® Reflector |
| V521SPGO                         | - Specular Gold <i>Alzak</i> ® Reflector  |
| V521WH                           | - Matte White Reflector                   |
| <b>White Multi-Groove Baffle</b> |   |
| V522SPCL                         | - Specular Clear <i>Alzak</i> ® Reflector |
| V522SPGO                         | - Specular Gold <i>Alzak</i> ® Reflector  |
| V522WH                           | - Matte White Reflector                   |

More Color Options Available See Page 6

Factory Standard is a Low Iridescent *Alzak*® finish

*Alzak*® is a registered trademark of ALCOA

#### Accessories

ST277 - Step Down Transformer (277:115)

FS - Fuse

RM - Old Work Remodeler Housing

CB517 - Caddy Bars (517)

CB520 - Caddy Bars (520)



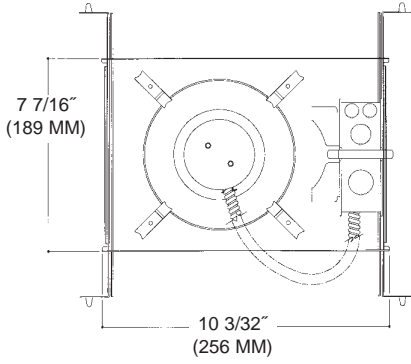
Tested and Listed to ETL/UL standard 1598 and CSA standards.

5"

Vertical Tall Incandescent

(Par / A-Lamp)

### 5" Vertical Maximum Watt Incandescent

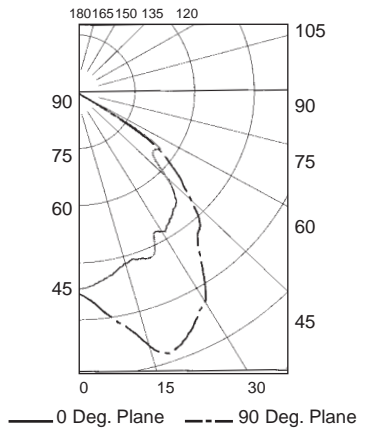


**Frame  
V500**

**Reflector  
VT510SPCL**

**LTL Test # 11289**

**Efficiency: 53.7%**  
**Total Lumens: 1710**  
**Lamp Source: 1x100W**  
**GE 100A Standard A19**



**Cone of Light**

| Ft below | FC nadir | Dia @ 50% |
|----------|----------|-----------|
| 6.0      | 14.6     | 5.6       |
| 8.0      | 8.2      | 7.5       |
| 10.0     | 5.2      | 9.3       |
| 12.0     | 3.6      | 11.2      |
| 14.0     | 2.7      | 13.1      |
| 16.0     | 2.0      | 14.9      |

**Coefficients of Utilization**

| RC | 80 |    |    |    | 70 |    |    |    | 50 |    |    |    | 30 |    |    |    | 10 |    |    |    | 0  |    |    |  |
|----|----|----|----|----|----|----|----|----|----|----|----|----|----|----|----|----|----|----|----|----|----|----|----|--|
| RW | 70 | 50 | 30 | 10 | 70 | 50 | 30 | 10 | 50 | 30 | 10 | 50 | 30 | 10 | 50 | 30 | 10 | 50 | 30 | 10 | 50 | 30 | 10 |  |
| 0  | 64 | 64 | 64 | 64 | 62 | 62 | 62 | 62 | 60 | 60 | 60 | 57 | 57 | 57 | 55 | 55 | 55 | 54 | 54 | 54 | 54 | 54 | 54 |  |
| 1  | 60 | 58 | 57 | 55 | 59 | 57 | 56 | 54 | 55 | 54 | 53 | 53 | 52 | 51 | 51 | 50 | 50 | 49 | 49 | 49 | 49 | 49 | 49 |  |
| 2  | 57 | 53 | 51 | 49 | 55 | 52 | 50 | 48 | 51 | 49 | 47 | 49 | 47 | 46 | 47 | 46 | 45 | 44 | 44 | 44 | 44 | 44 | 44 |  |
| 3  | 53 | 48 | 45 | 43 | 52 | 48 | 45 | 42 | 46 | 44 | 42 | 45 | 43 | 41 | 44 | 42 | 40 | 39 | 39 | 39 | 39 | 39 | 39 |  |
| 4  | 49 | 44 | 40 | 38 | 48 | 43 | 40 | 37 | 42 | 39 | 37 | 41 | 39 | 36 | 40 | 38 | 36 | 35 | 35 | 35 | 35 | 35 | 35 |  |
| 5  | 46 | 40 | 36 | 33 | 45 | 39 | 36 | 33 | 38 | 35 | 33 | 37 | 35 | 32 | 36 | 34 | 32 | 31 | 31 | 31 | 31 | 31 | 31 |  |
| 6  | 42 | 36 | 32 | 29 | 41 | 36 | 32 | 29 | 35 | 31 | 29 | 34 | 31 | 29 | 33 | 30 | 28 | 27 | 27 | 27 | 27 | 27 | 27 |  |
| 7  | 39 | 32 | 28 | 25 | 38 | 32 | 28 | 25 | 31 | 28 | 25 | 30 | 27 | 25 | 30 | 27 | 25 | 24 | 24 | 24 | 24 | 24 | 24 |  |
| 8  | 36 | 29 | 25 | 22 | 35 | 29 | 25 | 22 | 28 | 24 | 22 | 27 | 24 | 22 | 27 | 24 | 22 | 21 | 21 | 21 | 21 | 21 | 21 |  |
| 9  | 33 | 26 | 22 | 19 | 32 | 26 | 22 | 19 | 25 | 22 | 19 | 25 | 21 | 19 | 24 | 21 | 19 | 18 | 18 | 18 | 18 | 18 | 18 |  |
| 10 | 30 | 24 | 20 | 17 | 30 | 23 | 20 | 17 | 23 | 19 | 17 | 22 | 19 | 17 | 22 | 19 | 17 | 16 | 16 | 16 | 16 | 16 | 16 |  |

**Frame Options**

**CFM** - Custom Frame Modifications (*consult factory*)

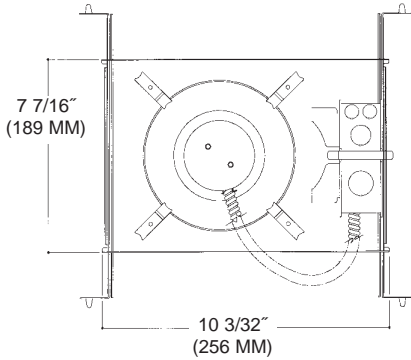
\*\* - specify slope degrees in 5° increments up to 45°

**Trim Options**

- PFL** - Polish Flange
- TLP** - Top Re-lamp Modifications
- FGSK** - Flange Gasket
- GR** - Goof Ring\*

\* - specify I.D. and O.D. standard white finish

### 5" Vertical Maximum Watt Incandescent

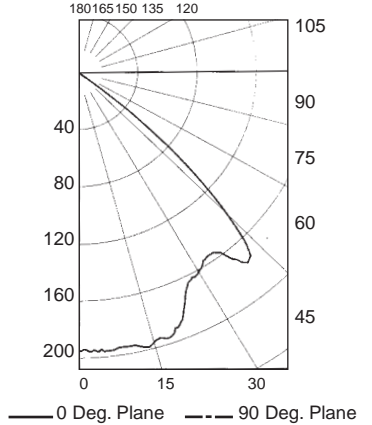


**Frame  
V500**

**Reflector  
VT521SPCL**

**LTL Test # 11290**

**Efficiency: 21.8%**  
**Total Lumens: 1710**  
**Lamp Source: 1x100W**  
**GE 100A Standard A19**



**Cone of Light**

| Ft below | FC nadir | Dia @ 50% |
|----------|----------|-----------|
| 6.0      | 5.4      | 7.4       |
| 8.0      | 3.0      | 9.9       |
| 10.0     | 2.0      | 12.3      |
| 12.0     | 1.4      | 14.8      |
| 14.0     | 1.0      | 17.3      |
| 16.0     | 0.8      | 19.7      |

**Coefficients of Utilization**

| RC | 80 |    |    |    | 70 |    |    |    | 50 |    |    |    | 30 |    |    |    | 10 |    |    |    | 0  |    |    |  |
|----|----|----|----|----|----|----|----|----|----|----|----|----|----|----|----|----|----|----|----|----|----|----|----|--|
| RW | 70 | 50 | 30 | 10 | 70 | 50 | 30 | 10 | 50 | 30 | 10 | 50 | 30 | 10 | 50 | 30 | 10 | 50 | 30 | 10 | 50 | 30 | 10 |  |
| 0  | 26 | 26 | 26 | 26 | 25 | 25 | 25 | 25 | 24 | 24 | 24 | 23 | 23 | 23 | 22 | 22 | 22 | 22 | 22 | 22 | 22 | 22 | 22 |  |
| 1  | 25 | 24 | 23 | 23 | 24 | 24 | 23 | 23 | 23 | 22 | 22 | 22 | 21 | 21 | 21 | 21 | 21 | 20 | 20 | 20 | 20 | 20 | 20 |  |
| 2  | 23 | 22 | 21 | 21 | 23 | 22 | 21 | 20 | 21 | 20 | 20 | 20 | 20 | 19 | 20 | 19 | 19 | 19 | 19 | 19 | 19 | 19 | 19 |  |
| 3  | 22 | 20 | 19 | 18 | 22 | 20 | 19 | 18 | 20 | 19 | 18 | 19 | 18 | 18 | 19 | 18 | 17 | 17 | 17 | 17 | 17 | 17 | 17 |  |
| 4  | 21 | 19 | 18 | 17 | 20 | 19 | 17 | 17 | 18 | 17 | 16 | 18 | 17 | 16 | 17 | 17 | 16 | 16 | 16 | 16 | 16 | 16 | 16 |  |
| 5  | 19 | 17 | 16 | 15 | 19 | 17 | 16 | 15 | 17 | 16 | 15 | 17 | 16 | 15 | 16 | 15 | 15 | 14 | 14 | 14 | 14 | 14 | 14 |  |
| 6  | 18 | 16 | 15 | 14 | 18 | 16 | 14 | 13 | 15 | 14 | 13 | 15 | 14 | 13 | 15 | 14 | 13 | 13 | 13 | 13 | 13 | 13 | 13 |  |
| 7  | 17 | 15 | 13 | 12 | 17 | 14 | 13 | 12 | 14 | 13 | 12 | 14 | 13 | 12 | 14 | 13 | 12 | 11 | 11 | 11 | 11 | 11 | 11 |  |
| 8  | 16 | 13 | 12 | 11 | 15 | 13 | 12 | 11 | 13 | 12 | 11 | 13 | 11 | 11 | 12 | 11 | 11 | 10 | 10 | 10 | 10 | 10 | 10 |  |
| 9  | 15 | 12 | 11 | 10 | 14 | 12 | 10 | 9  | 12 | 10 | 9  | 12 | 10 | 9  | 11 | 10 | 9  | 9  | 9  | 9  | 9  | 9  | 9  |  |
| 10 | 13 | 11 | 9  | 8  | 13 | 11 | 9  | 8  | 11 | 9  | 8  | 10 | 9  | 8  | 10 | 9  | 8  | 8  | 8  | 8  | 8  | 8  | 8  |  |

**Frame Options**

**CFM** - Custom Frame Modifications (*consult factory*)

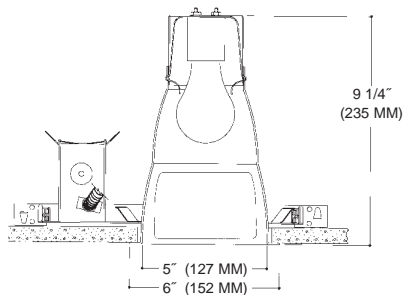
\*\* - specify slope degrees in 5° increments up to 45°

**Trim Options**

- PFL** - Polish Flange
- TLP** - Top Re-lamp Modifications
- FGSK** - Flange Gasket
- GR** - Goof Ring\*

\* - specify I.D. and O.D. standard white finish

## MAXIMUM WATTAGE WALL WASH REFLECTOR



Aperture: 5 1/16", Ceiling Cutout: 5 1/4", OD: 6 3/16"

### Housing

| Part #                           | Description                    |
|----------------------------------|--------------------------------|
| V500                             | 5" Tall 100W Max. Incandescent |
| <b>Suitable Lamp Types:</b>      |                                |
| A19/A21, BR40, Par16/Par20/Par30 |                                |

### Trim

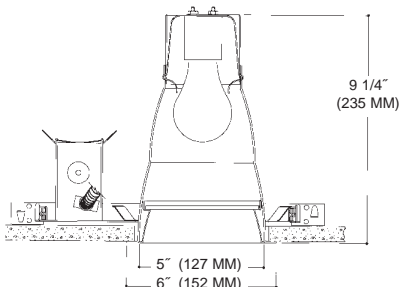
| Part #   | Description                     |
|--|---------------------------------|
| <b>Single Wall Wash</b>                            |                                 |
| V581SPCL   | Specular Clear Alzak® Reflector |
| V581SPGO   | Specular Gold Alzak® Reflector  |
| V581WH   | Matte White Reflector           |
| <b>Double Wall Wash</b>                            |                                 |
| V582SPCL   | Specular Clear Alzak® Reflector |
| V582SPGO   | Specular Gold Alzak® Reflector  |
| V582WH   | Matte White Reflector           |
| More Color Options Available See Page 6            |                                 |
| Factory Standard is a Low Iridescent Alzak® finish |                                 |
| Alzak® is a registered trademark of ALCOA          |                                 |

### Accessories

|       |                                   |       |                    |
|-------|-----------------------------------|-------|--------------------|
| ST277 | - Step Down Transformer (277:115) | CB517 | - Caddy Bars (517) |
| FS    | - Fuse                            | CB520 | - Caddy Bars (520) |
| RM    | - Old Work Remodeler Housing      |       |                    |



## MAXIMUM WATTAGE ENCLOSED LENS REFLECTOR



Aperture: 5 1/16", Ceiling Cutout: 5 1/4", OD: 6 3/16"

### Housing

| Part #                           | Description                   |
|----------------------------------|-------------------------------|
| V500                             | 5" Tall 75W Max. Incandescent |
| <b>Suitable Lamp Types:</b>      |                               |
| A19/A21, BR40, Par16/Par20/Par30 |                               |

### Trim

| Part #   | Description                     |
|--|---------------------------------|
| <b>C73 Prismatic Lens</b>                          |                                 |
| V530SPCL   | Specular Clear Alzak® Reflector |
| V530WH   | Matte White Splay               |
| <b>Fresnel Lens</b>                                |                                 |
| V532SPCL   | Specular Clear Alzak® Reflector |
| V532WH   | Matte White Splay               |
| More Color Options Available See Page 6            |                                 |
| Factory Standard is a Low Iridescent Alzak® finish |                                 |
| Alzak® is a registered trademark of ALCOA          |                                 |

### Accessories

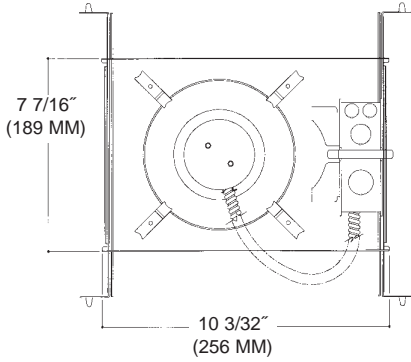
|       |                                   |       |                    |
|-------|-----------------------------------|-------|--------------------|
| ST277 | - Step Down Transformer (277:115) | CB517 | - Caddy Bars (517) |
| FS    | - Fuse                            | CB520 | - Caddy Bars (520) |
| RM    | - Old Work Remodeler Housing      |       |                    |



5"

Vertical Tall Incandescent (Par / A-Lamp)

### 5" Vertical Maximum Watt Incandescent

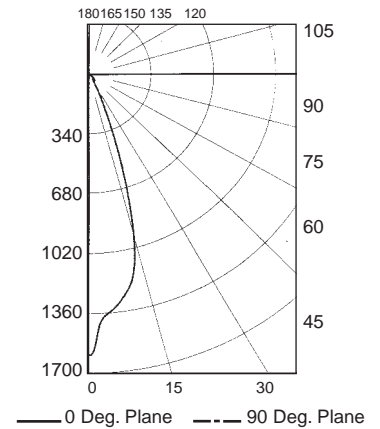


**Frame  
V500**

**Reflector  
VT510SPCL**

**LTL Test # 11288**

**Efficiency: 93.8%**  
**Total Lumens: 50**  
**Lamp Source: 1x50W**  
 Sylvania  
 50PAR30LN/CAP/NFL/30-120V



#### Coefficients of Utilization

| RC | 80  |     |     |     | 70  |     |     |     | 50  |     |     |     | 30  |     |    |    | 10 |    |    |    | 0  |    |    |  |
|----|-----|-----|-----|-----|-----|-----|-----|-----|-----|-----|-----|-----|-----|-----|----|----|----|----|----|----|----|----|----|--|
| RW | 70  | 50  | 30  | 10  | 70  | 50  | 30  | 10  | 50  | 30  | 10  | 50  | 30  | 10  | 50 | 30 | 10 | 50 | 30 | 10 | 50 | 30 | 10 |  |
| 0  | 112 | 112 | 112 | 112 | 109 | 109 | 109 | 109 | 104 | 104 | 104 | 100 | 100 | 100 | 96 | 96 | 96 | 94 | 94 | 94 | 94 | 94 | 94 |  |
| 1  | 108 | 106 | 104 | 102 | 106 | 104 | 102 | 101 | 100 | 99  | 98  | 97  | 96  | 95  | 94 | 92 | 91 | 91 | 90 | 89 | 88 | 88 | 88 |  |
| 2  | 104 | 101 | 98  | 96  | 102 | 99  | 97  | 95  | 97  | 94  | 93  | 94  | 92  | 91  | 91 | 90 | 89 | 88 | 88 | 88 | 88 | 88 | 88 |  |
| 3  | 101 | 97  | 94  | 91  | 100 | 96  | 93  | 90  | 93  | 91  | 89  | 91  | 89  | 87  | 89 | 88 | 86 | 85 | 85 | 85 | 85 | 85 | 85 |  |
| 4  | 98  | 93  | 89  | 87  | 97  | 92  | 89  | 86  | 90  | 87  | 85  | 88  | 86  | 84  | 87 | 85 | 83 | 82 | 82 | 82 | 82 | 82 | 82 |  |
| 5  | 95  | 89  | 85  | 83  | 94  | 89  | 85  | 82  | 87  | 84  | 82  | 86  | 83  | 81  | 84 | 82 | 80 | 79 | 79 | 79 | 79 | 79 | 79 |  |
| 6  | 92  | 86  | 82  | 80  | 91  | 86  | 82  | 79  | 84  | 81  | 79  | 83  | 80  | 78  | 82 | 80 | 78 | 77 | 77 | 77 | 77 | 77 | 77 |  |
| 7  | 89  | 83  | 79  | 76  | 88  | 83  | 79  | 76  | 81  | 78  | 76  | 81  | 78  | 75  | 80 | 77 | 75 | 74 | 74 | 74 | 74 | 74 | 74 |  |
| 8  | 87  | 80  | 76  | 74  | 86  | 80  | 76  | 73  | 79  | 76  | 73  | 78  | 75  | 73  | 77 | 75 | 73 | 72 | 72 | 72 | 72 | 72 | 72 |  |
| 9  | 84  | 78  | 74  | 71  | 83  | 77  | 74  | 71  | 77  | 73  | 71  | 76  | 73  | 71  | 75 | 73 | 70 | 70 | 70 | 70 | 70 | 70 | 70 |  |
| 10 | 92  | 75  | 72  | 69  | 81  | 75  | 71  | 69  | 74  | 71  | 69  | 74  | 71  | 69  | 73 | 70 | 68 | 68 | 68 | 68 | 68 | 68 | 68 |  |

#### Cone of Light

| Ft below | FC nadir | Dia @ 50% |
|----------|----------|-----------|
| 6.0      | 44.3     | 3.4       |
| 8.0      | 24.9     | 4.5       |
| 10.0     | 16.0     | 5.6       |
| 12.0     | 11.1     | 6.7       |
| 14.0     | 8.1      | 7.8       |
| 16.0     | 6.2      | 9.0       |

#### Frame Options

**CFM** - Custom Frame Modifications (*consult factory*)

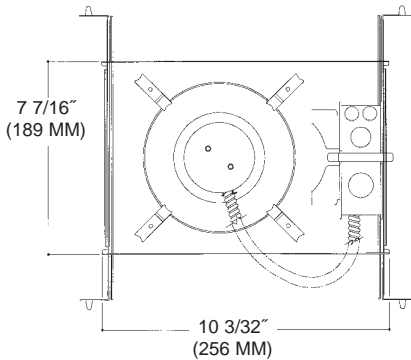
\*\* - specify slope degrees in 5° increments up to 45°

#### Trim Options

- PFL** - Polish Flange
- TLP** - Top Re-lamp Modifications
- FGSK** - Flange Gasket
- GR** - Goof Ring\*

\* - specify I.D. and O.D. standard white finish

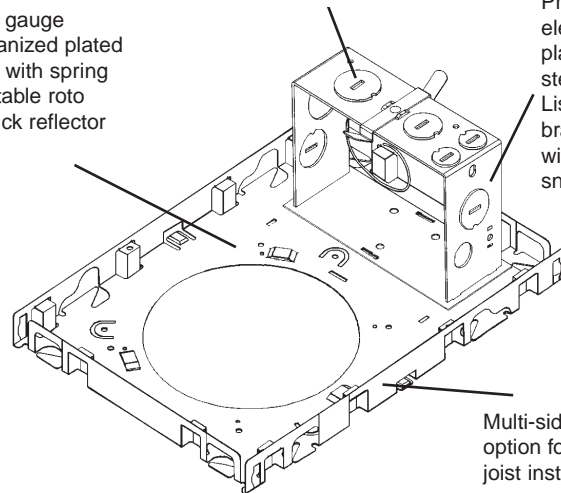
### 5" Vertical Shallow Incandescent



Heavy, .027 gauge electrogalvanized plated steel frame with spring steel adjustable roto clips for quick reflector installation.

Multiple 1/2" and 3/4" pryouts.

Prewired and grounded electrogalvanized plated heavy gauge steel junction box. Listed for through branch circuit wiring with two galvanized snap on covers



Multi-sided hanger bar option for various size joist installations.

#### Frame Options

**CFM** - Custom Frame Modifications (*consult factory*)

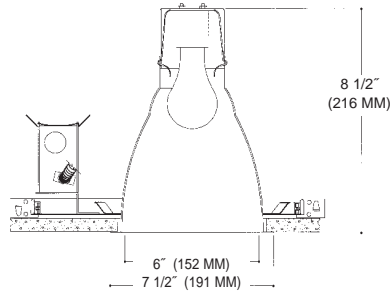
\*\* - specify slope degrees in 5° increments up to 45°

#### Trim Options

- PFL** - Polish Flange
- TLP** - Top Re-lamp Modifications
- FGSK** - Flange Gasket
- GR** - Goof Ring\*

\* - specify I.D. and O.D. standard white finish

## OPEN REFLECTOR



Aperture: 6", Ceiling Cutout: 6 1/4", OD: 7 1/2"

### Housing

| Part # | Description               |
|--------|---------------------------|
| V600   | 6" 150W Max. Incandescent |

#### Suitable Lamp Types:

A19/A21/A23/PS25, BR40

Par16/Par20/Par30

### Trim

| Part #   | Description                      |
|----------|----------------------------------|
| V610SPCL | Specular Clear Alzak® Reflector  |
| V610SPGO | Specular Gold Alzak® Reflector   |
| V610SPWT | Specular Wheat Alzak® Reflector  |
| V610SPPW | Specular Pewter Alzak® Reflector |
| V610SPUM | Specular Umber Alzak® Reflector  |
| V610SPBL | Specular Black Alzak® Reflector  |
| V610WH   | Matte White Reflector            |

More Color Options Available See Page 6

Factory Standard is a Low Iridescent Alzak® finish  
Alzak® is a registered trademark of ALCOA

### Accessories

ST277 - Step Down Transformer (277:115)

FS - Fuse

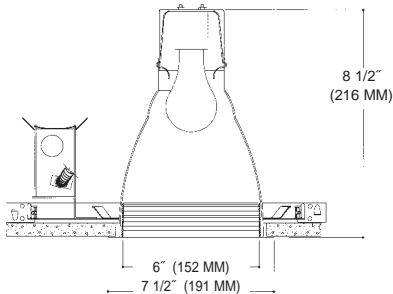
RM - Old Work Remodeler Housing

CB517 - Caddy Bars (517)

CB520 - Caddy Bars (520)



## OPEN BAFFLE REFLECTOR



Aperture: 6", Ceiling Cutout: 6 1/4", OD: 7 1/2"

### Housing

| Part # | Description               |
|--------|---------------------------|
| V600   | 6" 150W Max. Incandescent |

#### Suitable Lamp Types:

A19/A21/A23/PS25, BR40

Par16/Par20/Par30

### Trim

| Part #                           | Description                     |
|----------------------------------|---------------------------------|
| <b>Black Multi-Groove Baffle</b> |                                 |
| V621SPCL                         | Specular Clear Alzak® Reflector |
| V621SPGO                         | Specular Gold Alzak® Reflector  |
| V621WH                           | Matte White Reflector           |
| <b>White Multi-Groove Baffle</b> |                                 |
| V622SPCL                         | Specular Clear Alzak® Reflector |
| V622SPGO                         | Specular Gold Alzak® Reflector  |
| V622WH                           | Matte White Reflector           |

More Color Options Available See Page 6

Factory Standard is a Low Iridescent Alzak® finish  
Alzak® is a registered trademark of ALCOA

### Accessories

ST277 - Step Down Transformer (277:115)

FS - Fuse

RM - Old Work Remodeler Housing

CB517 - Caddy Bars (517)

CB520 - Caddy Bars (520)

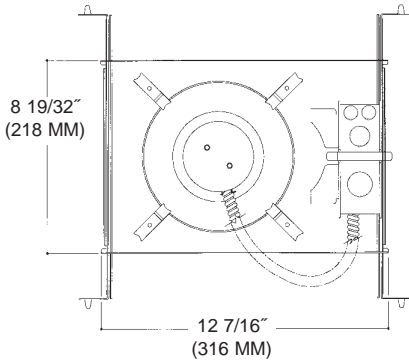


6"

Vertical Incandescent

(Par / A-Lamp)

### 6" Vertical Incandescent

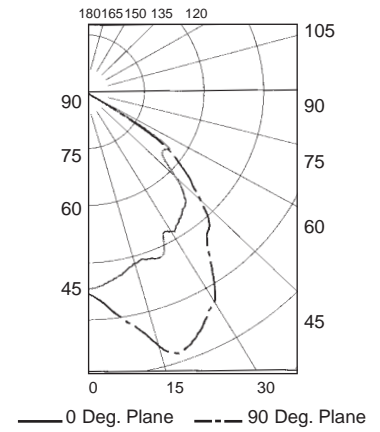


**Frame  
V600**

**Reflector  
V610SPCL**

**LTL Test # 11291**

**Efficiency: 75.1%**  
**Total Lumens: 2880**  
**Lamp Source: 1x150W**  
**GE 150A Standard A21**



#### Cone of Light

| Ft below | FC nadir | Dia @ 50% |
|----------|----------|-----------|
| 6.0      | 17.9     | 11.1      |
| 8.0      | 10.1     | 14.7      |
| 10.0     | 6.5      | 18.4      |
| 12.0     | 4.5      | 22.1      |
| 14.0     | 3.3      | 25.8      |
| 16.0     | 2.5      | 29.5      |

#### Coefficients of Utilization

| RC | 80 |    |    |    | 70 |    |    |    | 50 |    |    |    | 30 |    |    |    | 10 |    |    |    | 0  |  |  |  |
|----|----|----|----|----|----|----|----|----|----|----|----|----|----|----|----|----|----|----|----|----|----|--|--|--|
|    | RW | 70 | 50 | 30 | 10 | 70 | 50 | 30 | 10 | 50 | 30 | 10 | 50 | 30 | 10 | 50 | 30 | 10 | 50 | 30 | 10 |  |  |  |
| 0  | 89 | 89 | 89 | 89 | 87 | 87 | 87 | 87 | 83 | 83 | 83 | 80 | 80 | 80 | 77 | 77 | 77 | 75 |    |    |    |  |  |  |
| 1  | 84 | 81 | 79 | 77 | 82 | 79 | 77 | 75 | 76 | 75 | 73 | 73 | 72 | 71 | 71 | 70 | 69 | 67 |    |    |    |  |  |  |
| 2  | 78 | 73 | 70 | 66 | 76 | 72 | 69 | 65 | 70 | 67 | 64 | 67 | 65 | 63 | 65 | 63 | 61 | 60 |    |    |    |  |  |  |
| 3  | 72 | 66 | 61 | 57 | 71 | 65 | 60 | 57 | 63 | 59 | 56 | 61 | 58 | 55 | 59 | 56 | 54 | 53 |    |    |    |  |  |  |
| 4  | 67 | 59 | 54 | 50 | 65 | 59 | 53 | 49 | 57 | 52 | 49 | 55 | 51 | 48 | 54 | 50 | 48 | 46 |    |    |    |  |  |  |
| 5  | 62 | 53 | 47 | 43 | 60 | 52 | 47 | 43 | 51 | 46 | 42 | 50 | 45 | 42 | 48 | 45 | 42 | 40 |    |    |    |  |  |  |
| 6  | 57 | 48 | 34 | 37 | 55 | 47 | 41 | 37 | 46 | 40 | 37 | 44 | 40 | 36 | 43 | 39 | 36 | 35 |    |    |    |  |  |  |
| 7  | 52 | 42 | 36 | 32 | 50 | 41 | 36 | 31 | 40 | 35 | 31 | 39 | 35 | 31 | 38 | 34 | 31 | 29 |    |    |    |  |  |  |
| 8  | 47 | 38 | 31 | 27 | 46 | 37 | 31 | 27 | 36 | 31 | 27 | 35 | 30 | 27 | 34 | 30 | 27 | 25 |    |    |    |  |  |  |
| 9  | 43 | 33 | 27 | 23 | 42 | 33 | 27 | 23 | 32 | 27 | 23 | 31 | 26 | 23 | 31 | 26 | 23 | 21 |    |    |    |  |  |  |
| 10 | 40 | 30 | 24 | 20 | 39 | 29 | 24 | 20 | 29 | 23 | 20 | 28 | 23 | 20 | 27 | 23 | 20 | 18 |    |    |    |  |  |  |

#### Frame Options

**CFM** - Custom Frame Modifications (*consult factory*)

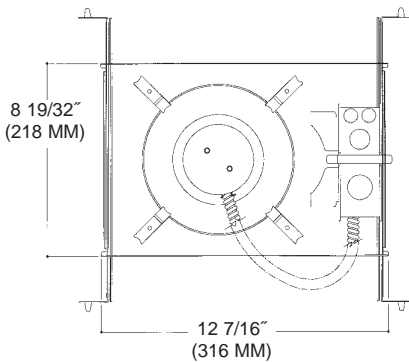
\*\* - specify slope degrees in 5° increments up to 45°

#### Trim Options

- PFL** - Polish Flange
- TLP** - Top Re-lamp Modifications
- FGSK** - Flange Gasket
- GR** - Goof Ring\*

\* - specify I.D. and O.D. standard white finish

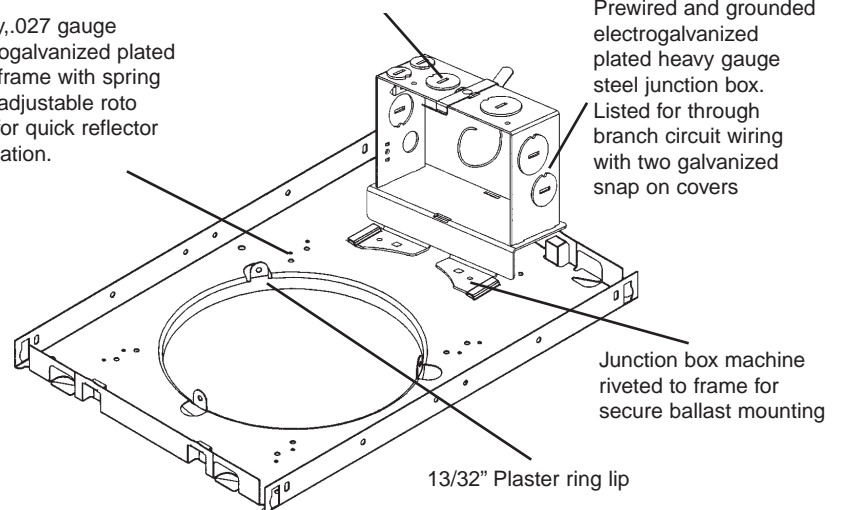
### 6" Vertical Incandescent



Heavy, .027 gauge electrogalvanized plated steel frame with spring steel adjustable roto clips for quick reflector installation.

Multiple 1/2" and 3/4" pryouts.

Prewired and grounded electrogalvanized plated heavy gauge steel junction box. Listed for through branch circuit wiring with two galvanized snap on covers



Junction box machine riveted to frame for secure ballast mounting

13/32" Plaster ring lip

#### Frame Options

**CFM** - Custom Frame Modifications (*consult factory*)

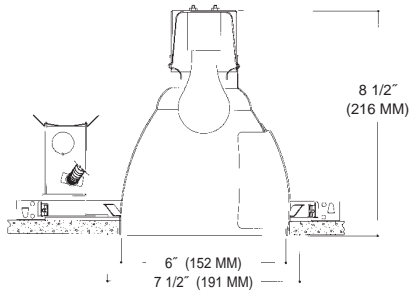
\*\* - specify slope degrees in 5° increments up to 45°

#### Trim Options

- PFL** - Polish Flange
- TLP** - Top Re-lamp Modifications
- FGSK** - Flange Gasket
- GR** - Goof Ring\*

\* - specify I.D. and O.D. standard white finish

## OPEN WALL WASH REFLECTOR



Aperture: 6", Ceiling Cutout: 6 1/4", OD: 7 1/4"

### Housing

| Part #                      | Description               |
|-----------------------------|---------------------------|
| V600                        | 6" 150W Max. Incandescent |
| <b>Suitable Lamp Types:</b> |                           |
| A19/A21/A23/PS25, BR40      |                           |
| Par16/Par20/Par30           |                           |

### Trim

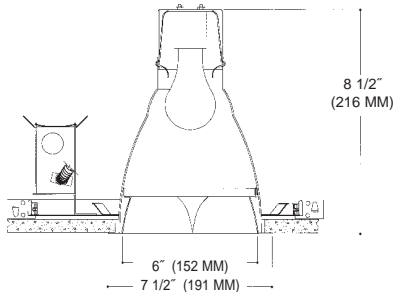
| Part #   | Description                     |
|--|---------------------------------|
| <b>Single Wall Wash</b>                            |                                 |
| VX81SPCL   | Specular Clear Alzak® Reflector |
| VX81SPGO   | Specular Gold Alzak® Reflector  |
| VX81WH   | Matte White Reflector           |
| <b>Double Wall Wash</b>                            |                                 |
| VX82SPCL   | Specular Clear Alzak® Reflector |
| VX82SPGO   | Specular Gold Alzak® Reflector  |
| VX82WH   | Matte White Reflector           |
| More Color Options Available See Page 6            |                                 |
| Factory Standard is a Low Iridescent Alzak® finish |                                 |
| Alzak® is a registered trademark of ALCOA          |                                 |

### Accessories

|       |                                   |       |                    |
|-------|-----------------------------------|-------|--------------------|
| ST277 | - Step Down Transformer (277:115) | CB517 | - Caddy Bars (517) |
| FS    | - Fuse                            | CB520 | - Caddy Bars (520) |
| RM    | - Old Work Remodeler Housing      |       |                    |



## PARABOLIC LOUVER REFLECTOR



Aperture: 6", Ceiling Cutout: 6 1/4", OD: 7 1/4"

### Housing

| Part #                      | Description               |
|-----------------------------|---------------------------|
| V600                        | 6" 150W Max. Incandescent |
| <b>Suitable Lamp Types:</b> |                           |
| A19/A21/A23/PS25, BR40      |                           |
| Par16/Par20/Par30           |                           |

### Trim

| Part #   | Description                      |
|--|----------------------------------|
| VXB610SPCL   | Specular Clear Alzak® Reflector  |
| VXB610SPGO   | Specular Gold Alzak® Reflector   |
| VXB610SPWT   | Specular Wheat Alzak® Reflector  |
| VXB610SPPW   | Specular Pewter Alzak® Reflector |
| VXB610SPUM   | Specular Umber Alzak® Reflector  |
| VXB610SPBL   | Specular Black Alzak® Reflector  |
| VXB610WH   | Matte White Reflector            |
| More Color Options Available See Page 6            |                                  |
| Factory Standard is a Low Iridescent Alzak® finish |                                  |
| Alzak® is a registered trademark of ALCOA          |                                  |

### Accessories

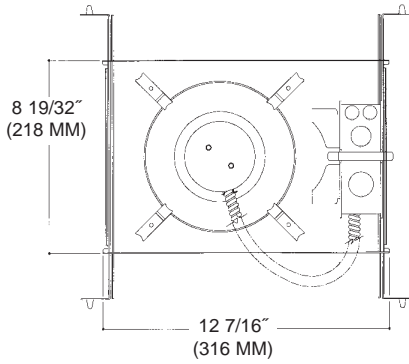
|       |                                   |       |                    |
|-------|-----------------------------------|-------|--------------------|
| ST277 | - Step Down Transformer (277:115) | CB517 | - Caddy Bars (517) |
| FS    | - Fuse                            | CB520 | - Caddy Bars (520) |
| RM    | - Old Work Remodeler Housing      |       |                    |



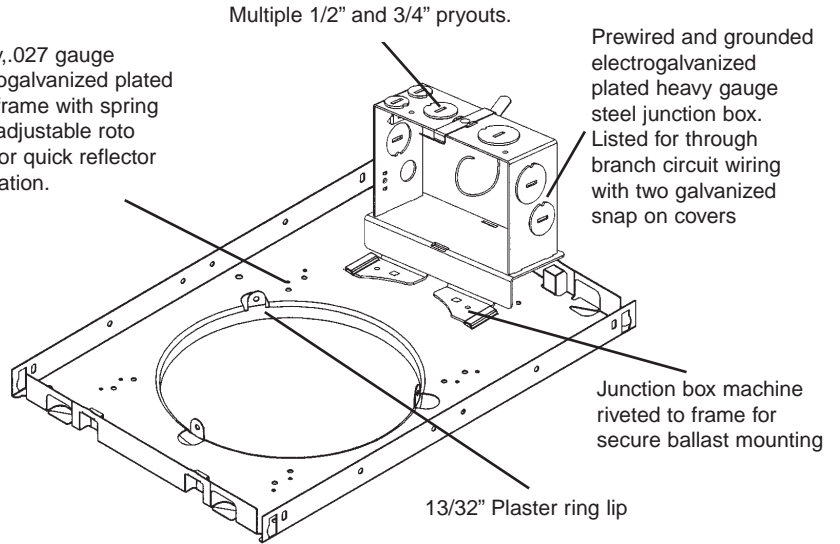
6"

Vertical Incandescent (Par / A-Lamp)

## 6" Vertical Incandescent



Heavy, .027 gauge electrogalvanized plated steel frame with spring steel adjustable roto clips for quick reflector installation.



### Frame Options

- CFM - Custom Frame Modifications (*consult factory*)
- SA\*\* - Slope Ceiling Adaptor (White Finish Standard)

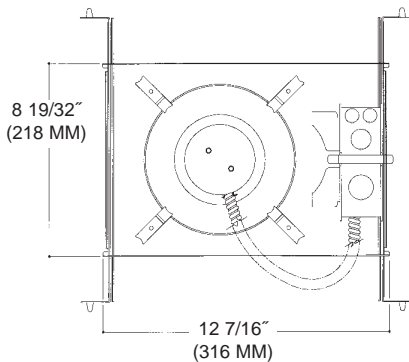
\*\* - specify slope degrees in 5° increments up to 45°

### Trim Options

- PFL - Polish Flange
- TLP - Top Re-lamp Modifications
- FGSK - Flange Gasket
- GR - Goof Ring\*

\* - specify I.D. and O.D. standard white finish

## 6" Vertical Incandescent



### Additional Product Info

#### Reflector

Single piece hand spun low iridescent Alzak® reflector with standard self trim flange and a white trim finish. 45° Lamp cutoff allows for a better visual cutoff than generally available.

High polish flange, white and black trim finish's available consult factory.

#### Socket

Aluminum, heat disipating socket cup vertically mounts to reflector by means of a firm locking adjustable husk clip. UL Listed, porcelin medium base socket.

#### Frame

Prewired electrogalvanized heavy steel junction box listed for through branch circuit wiring with 1/2" & 3/4" pryouts. Electrogalvanized plated steel housing with adjustable spring steel roto clips allowing for a quick trim installation.

Thermally protected 120V thermal cutout factory wired.

Housing accomodates any ceilings with a max. thickness of 1 3/4"

Same housing accomodates an open, lens, or wall wash reflector.

### Frame Options

- CFM - Custom Frame Modifications (*consult factory*)
- SA\*\* - Slope Ceiling Adaptor (White Finish Standard)

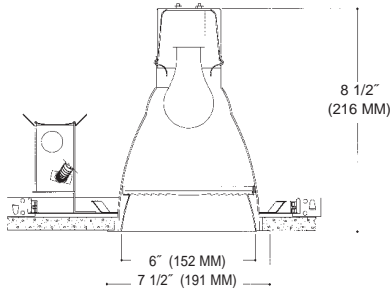
\*\* - specify slope degrees in 5° increments up to 45°

### Trim Options

- PFL - Polish Flange
- TLP - Top Re-lamp Modifications
- FGSK - Flange Gasket
- GR - Goof Ring\*

\* - specify I.D. and O.D. standard white finish

## ENCLOSED LENS REFLECTOR



Aperture: 6", Ceiling Cutout: 6 1/4", OD: 7 1/2"

Single piece hand spun low iridescent *Alzak*<sup>®</sup> reflector with 45° cutoff to lamp. Factory standard self trim flange with a white finish

Prewired electrogalvanized heavy steel junction box listed for through branch circuit wiring with 1/2" & 3/4" pryouts.

Electrogalvanized plated steel housing with adjustable spring steel roto clips allowing for a quick trim installation.

UL listed thermal protector cutout.

**Ceiling insulation must be kept 3" away from housing.**

**Listed for damp locations and wet locations under covered canopy.**

### Housing

| Part #                      | Description            |
|-----------------------------|------------------------|
| V600 - 6"                   | 100W Max. Incandescent |
| <b>Suitable Lamp Types:</b> |                        |
| A19/A21                     |                        |

### Trim

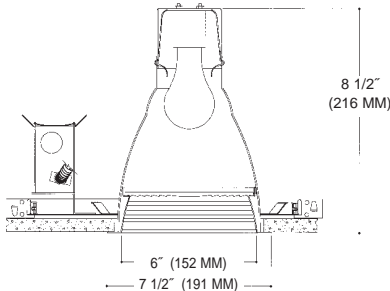
| Part #  | Description  |
|---|--|
| <b>C73 Prismatic Lens</b>   |  |
| V630SPCL  | - Specular Clear <i>Alzak</i> <sup>®</sup> Reflector |
| V630WH  | - Matte White Splay                                  |
| <b>Fresnel Lens</b>   |  |
| V632SPCL  | - Specular Clear <i>Alzak</i> <sup>®</sup> Reflector |
| V632WH  | - Matte White Splay                                  |
| <b>Clear Lens</b>   |  |
| V632SPCL  | - Specular Clear <i>Alzak</i> <sup>®</sup> Reflector |
| V632WH  | - Matte White Splay                                  |
| More Color Options Available See Page 6                               |  |
| Factory Standard is a Low Iridescent <i>Alzak</i> <sup>®</sup> finish |  |
| <i>Alzak</i> <sup>®</sup> is a registered trademark of ALCOA          |  |

### Accessories

|       |                                   |       |                    |
|-------|-----------------------------------|-------|--------------------|
| ST277 | - Step Down Transformer (277:115) | CB517 | - Caddy Bars (517) |
| FS    | - Fuse                            | CB520 | - Caddy Bars (520) |
| RM    | - Old Work Remodeler Housing      |       |                    |



## ENCLOSED BAFFLED LENS REFLECTOR



Aperture: 6", Ceiling Cutout: 6 1/4", OD: 7 1/2"

Single piece hand spun low iridescent *Alzak*<sup>®</sup> reflector with 45° cutoff to lamp. Factory standard self trim flange with a white finish

Prewired electrogalvanized heavy steel junction box listed for through branch circuit wiring with 1/2" & 3/4" pryouts.

Electrogalvanized plated steel housing with adjustable spring steel roto clips allowing for a quick trim installation.

UL listed thermal protector cutout.

**Ceiling insulation must be kept 3" away from housing.**

**Listed for damp locations and wet locations under covered canopy.**

### Housing

| Part #                      | Description            |
|-----------------------------|------------------------|
| V600 - 6"                   | 100W Max. Incandescent |
| <b>Suitable Lamp Types:</b> |                        |
| A19/A21                     |                        |

### Trim

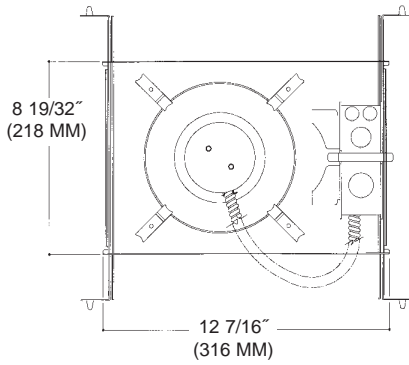
| Part #  | Description                       |
|---|-----------------------------------|
| <b>C73 Prismatic Lens</b>   |                                   |
| V660BL  | - Black Multi-Groove Baffle Splay |
| V660WH  | - White Multi-Groove Baffle Splay |
| <b>Fresnel Lens</b>   |                                   |
| V662BL  | - Black Multi-Groove Baffle Splay |
| V662WH  | - White Multi-Groove Baffle Splay |
| <b>Clear Lens</b>   |                                   |
| V666BL  | - Black Multi-Groove Baffle Splay |
| V666WH  | - White Multi-Groove Baffle Splay |
| More Color Options Available See Page 6                               |                                   |
| Factory Standard is a Low Iridescent <i>Alzak</i> <sup>®</sup> finish |                                   |
| <i>Alzak</i> <sup>®</sup> is a registered trademark of ALCOA          |                                   |

### Accessories

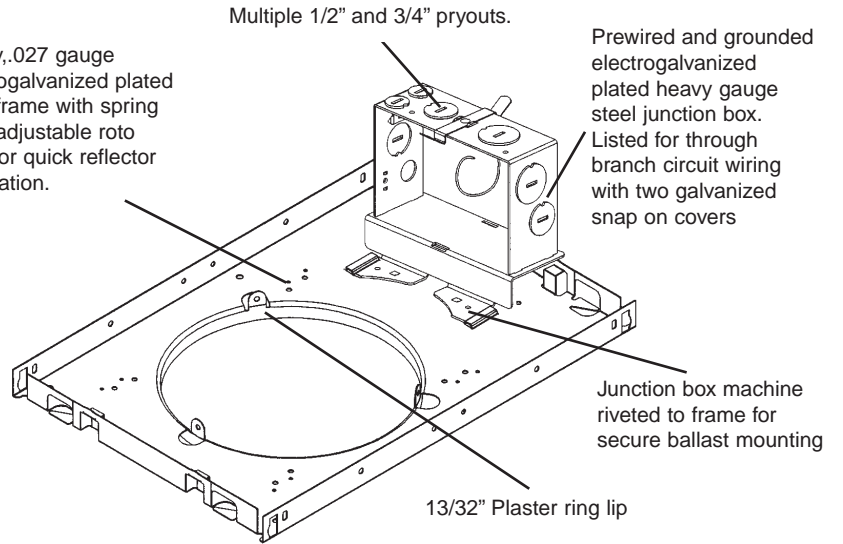
|       |                                   |       |                    |
|-------|-----------------------------------|-------|--------------------|
| ST277 | - Step Down Transformer (277:115) | CB517 | - Caddy Bars (517) |
| FS    | - Fuse                            | CB520 | - Caddy Bars (520) |
| RM    | - Old Work Remodeler Housing      |       |                    |



## 6" Vertical Incandescent



Heavy, .027 gauge electrogalvanized plated steel frame with spring steel adjustable roto clips for quick reflector installation.



### Frame Options

- CFM** - Custom Frame Modifications (*consult factory*)
- SA\*\*** - Slope Ceiling Adaptor (White Finish Standard)

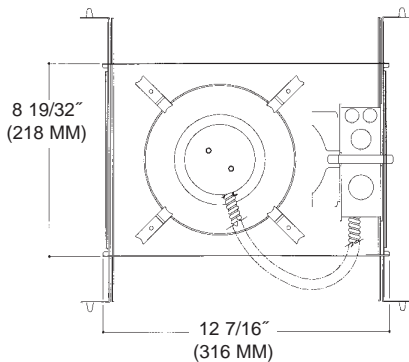
\*\* - specify slope degrees in 5° increments up to 45°

### Trim Options

- PFL** - Polish Flange
- TLP** - Top Re-lamp Modifications
- FGSK** - Flange Gasket
- GR** - Goof Ring\*

\* - specify I.D. and O.D. standard white finish

## 6" Vertical Incandescent



### Additional Product Info

#### Reflector

Single piece hand spun low iridescent Alzak® reflector with standard self trim flange and a white trim finish. 45° Lamp cutoff allows for a better visual cutoff than generally available. High polish flange, white and black trim finish's available consult factory.

#### Socket

Aluminum, heat disipating socket cup vertically mounts to reflector by means of a firm locking adjustable husk clip. UL Listed, porcelin medium base socket.

#### Frame

Prewired electrogalvanized heavy steel junction box listed for through branch circuit wiring with 1/2" & 3/4" pryouts. Electrogalvanized plated steel housing with adjustable spring steel roto clips allowing for a quick trim installation.

Thermally protected 120V thermal cutout factory wired.

Housing accomodates any ceilings with a max. thickness of 1 3/4"

Same housing accomodates an open, lens, or wall wash reflector.

### Frame Options

- CFM** - Custom Frame Modifications (*consult factory*)
- SA\*\*** - Slope Ceiling Adaptor (White Finish Standard)

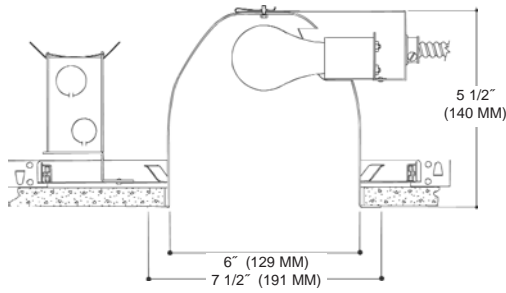
\*\* - specify slope degrees in 5° increments up to 45°

### Trim Options

- PFL** - Polish Flange
- TLP** - Top Re-lamp Modifications
- FGSK** - Flange Gasket
- GR** - Goof Ring\*

\* - specify I.D. and O.D. standard white finish

## OPEN REFLECTOR



Aperture: 6", Ceiling Cutout: 6 1/4", OD: 7 1/2"

Single piece hand spun low iridescent *Alzak*® reflector with 45° cutoff to lamp. Factory standard self trim flange with a white finish

Prewired electrogalvanized heavy steel junction box listed for through branch circuit wiring with 1/2" & 3/4" pryouts.

Electrogalvanized plated steel housing with adjustable spring steel roto clips allowing for a quick trim installation.

UL listed thermal protector cutout.

**Ceiling insulation must be kept 3" away from housing.**

**Listed for damp locations and wet locations under covered canopy.**

### Housing

| Part #                      | Description               |
|-----------------------------|---------------------------|
| H600                        | 6" 150W Max. Incandescent |
| <b>Suitable Lamp Types:</b> |                           |
| A19/A21                     |                           |

### Trim

| Part #   | Description                                |
|----------|--|
| H610SPCL | - Specular Clear <i>Alzak</i> ® Reflector  |
| H610SPGO | - Specular Gold <i>Alzak</i> ® Reflector   |
| H610SPWT | - Specular Wheat <i>Alzak</i> ® Reflector  |
| H610SPPW | - Specular Pewter <i>Alzak</i> ® Reflector |
| H610SPUM | - Specular Umber <i>Alzak</i> ® Reflector  |
| H610SPBL | - Specular Black <i>Alzak</i> ® Reflector  |
| H610WH   | - Matte White Reflector                    |

More Color Options Available See Page 6

Factory Standard is a Low Iridescent *Alzak*® finish

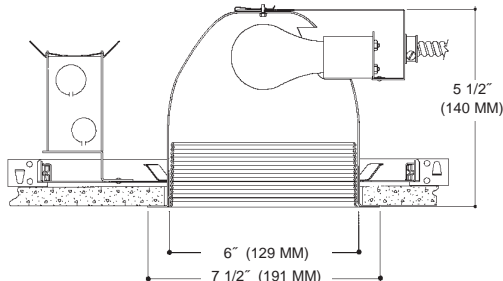
*Alzak*® is a registered trademark of ALCOA

### Accessories

|       |                                   |       |                    |
|-------|-----------------------------------|-------|--------------------|
| ST277 | - Step Down Transformer (277:115) | CB517 | - Caddy Bars (517) |
| FS    | - Fuse                            | CB520 | - Caddy Bars (520) |
| RM    | - Old Work Remodeler Housing      |       |                    |



## OPEN BAFFLE REFLECTOR



Aperture: 6", Ceiling Cutout: 6 1/4", OD: 7 1/2"

Single piece hand spun low iridescent *Alzak*® reflector with 45° cutoff to lamp. Factory standard self trim flange with a white finish

Prewired electrogalvanized heavy steel junction box listed for through branch circuit wiring with 1/2" & 3/4" pryouts.

Electrogalvanized plated steel housing with adjustable spring steel roto clips allowing for a quick trim installation.

UL listed thermal protector cutout.

**Ceiling insulation must be kept 3" away from housing.**

**Listed for damp locations and wet locations under covered canopy.**

### Housing

| Part #                      | Description               |
|-----------------------------|---------------------------|
| H600                        | 6" 150W Max. Incandescent |
| <b>Suitable Lamp Types:</b> |                           |
| A19/A21                     |                           |

### Trim

| Part #                           | Description                               |
|----------------------------------|---|
| <b>Black Multi-Groove Baffle</b> |   |
| H621SPCL                         | - Specular Clear <i>Alzak</i> ® Reflector |
| H621SPGO                         | - Specular Gold <i>Alzak</i> ® Reflector  |
| H621WH                           | - Matte White Reflector                   |
| <b>White Multi-Groove Baffle</b> |   |
| H622SPCL                         | - Specular Clear <i>Alzak</i> ® Reflector |
| H622SPGO                         | - Specular Gold <i>Alzak</i> ® Reflector  |
| H622WH                           | - Matte White Reflector                   |

More Color Options Available See Page 6

Factory Standard is a Low Iridescent *Alzak*® finish

*Alzak*® is a registered trademark of ALCOA

### Accessories

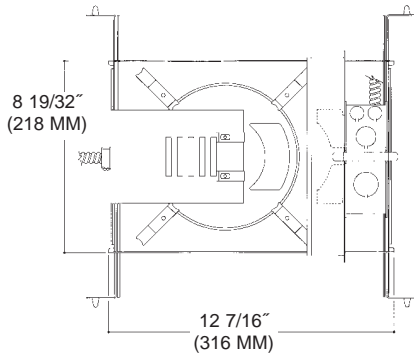
|       |                                   |       |                    |
|-------|-----------------------------------|-------|--------------------|
| ST277 | - Step Down Transformer (277:115) | CB517 | - Caddy Bars (517) |
| FS    | - Fuse                            | CB520 | - Caddy Bars (520) |
| RM    | - Old Work Remodeler Housing      |       |                    |



6"

Horizontal Incandescent (A-Lamp)

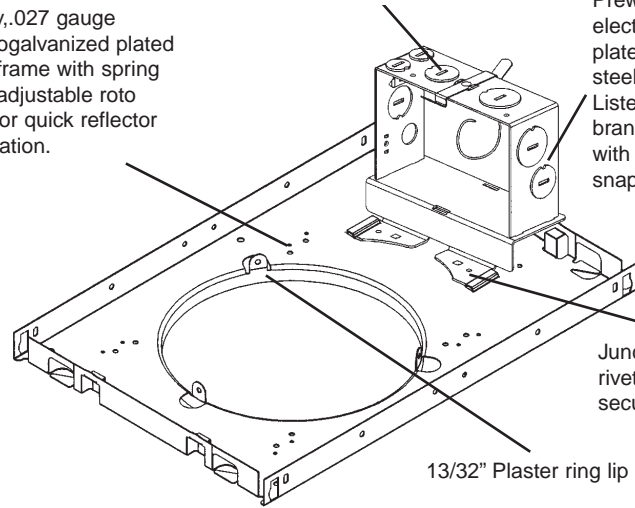
### 6" Horizontal Incandescent



Heavy .027 gauge electrogalvanized plated steel frame with spring steel adjustable roto clips for quick reflector installation.

Multiple 1/2" and 3/4" pryouts.

Prewired and grounded electrogalvanized plated heavy gauge steel junction box. Listed for through branch circuit wiring with two galvanized snap on covers



Junction box machine riveted to frame for secure ballast mounting

13/32" Plaster ring lip

#### Frame Options

- CFM - Custom Frame Modifications (*consult factory*)
- SA\*\* - Slope Ceiling Adaptor (White Finish Standard)

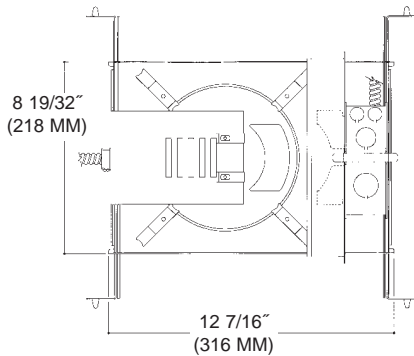
\*\* - specify slope degrees in 5° increments up to 45°

#### Trim Options

- PFL - Polish Flange
- TLP - Top Re-lamp Modifications
- FGSK - Flange Gasket
- GR - Goof Ring\*

\* - specify I.D. and O.D. standard white finish

### 6" Horizontal Incandescent



#### Additional Product Info

##### Reflector

Single piece hand spun low iridescent Alzak® reflector with standard self trim flange and a white trim finish. 45° Lamp cutoff allows for a better visual cutoff than generally available. High polish flange, white and black trim finish's available consult factory.

##### Socket

Aluminum, heat disipating socket cup vertically mounts to reflector by means of a firm locking adjustable husk clip. UL Listed, porcelin medium base socket.

##### Frame

Prewired electrogalvanized heavy steel junction box listed for through branch circuit wiring with 1/2" & 3/4" pryouts. Electrogalvanized plated steel housing with adjustable spring steel roto clips allowing for a quick trim installation.

Thermally protected 120V thermal cutout factory wired.

Housing accomodates any ceilings with a max. thickness of 1 3/4"

Same housing accomodates an open, lens, or wall wash reflector.

#### Frame Options

- CFM - Custom Frame Modifications (*consult factory*)
- SA\*\* - Slope Ceiling Adaptor (White Finish Standard)

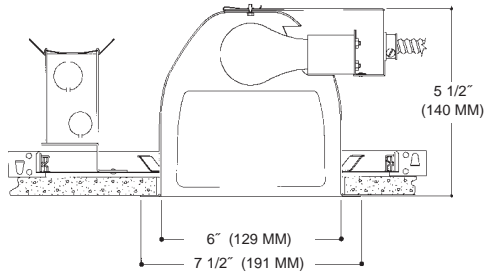
\*\* - specify slope degrees in 5° increments up to 45°

#### Trim Options

- PFL - Polish Flange
- TLP - Top Re-lamp Modifications
- FGSK - Flange Gasket
- GR - Goof Ring\*

\* - specify I.D. and O.D. standard white finish

## OPEN WALL WASH REFLECTOR



Aperture: 6", Ceiling Cutout: 6 1/4", OD: 7 1/2"

### Housing

| Part #                      | Description               |
|-----------------------------|---------------------------|
| H600                        | 6" 150W Max. Incandescent |
| <b>Suitable Lamp Types:</b> |                           |
| A19/A21                     |                           |

### Trim

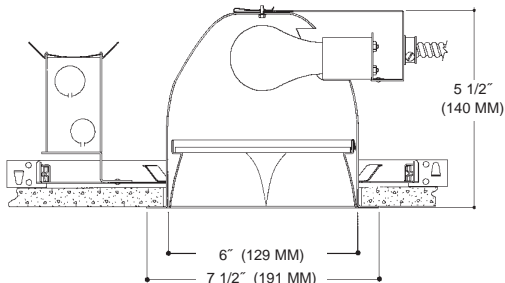
| Part #   | Description                     |
|--|---------------------------------|
| <b>Single Wall Wash</b>                            |                                 |
| H680SPCL   | Specular Clear Alzak® Reflector |
| H680SPGO   | Specular Gold Alzak® Reflector  |
| H680WH   | Matte White Reflector           |
| More Color Options Available See Page 6            |                                 |
| Factory Standard is a Low Iridescent Alzak® finish |                                 |
| Alzak® is a registered trademark of ALCOA          |                                 |

### Accessories

|       |                                   |       |                    |
|-------|-----------------------------------|-------|--------------------|
| ST277 | - Step Down Transformer (277:115) | CB517 | - Caddy Bars (517) |
| FS    | - Fuse                            | CB520 | - Caddy Bars (520) |
| RM    | - Old Work Remodeler Housing      |       |                    |



## PARABOLIC LOUVER REFLECTOR



Aperture: 6", Ceiling Cutout: 6 1/4", OD: 7 1/2"

### Housing

| Part #                      | Description               |
|-----------------------------|---------------------------|
| H600                        | 6" 150W Max. Incandescent |
| <b>Suitable Lamp Types:</b> |                           |
| A19/A21                     |                           |

### Trim

| Part #   | Description                      |
|--|----------------------------------|
| HXB610SPCL   | Specular Clear Alzak® Reflector  |
| HXB610SPGO   | Specular Gold Alzak® Reflector   |
| HXB610SPWT   | Specular Wheat Alzak® Reflector  |
| HXB610SPPW   | Specular Pewter Alzak® Reflector |
| HXB610SPUM   | Specular Umber Alzak® Reflector  |
| HXB610SPBL   | Specular Black Alzak® Reflector  |
| HXB610WH   | Matte White Reflector            |
| More Color Options Available See Page 6            |                                  |
| Factory Standard is a Low Iridescent Alzak® finish |                                  |
| Alzak® is a registered trademark of ALCOA          |                                  |

### Accessories

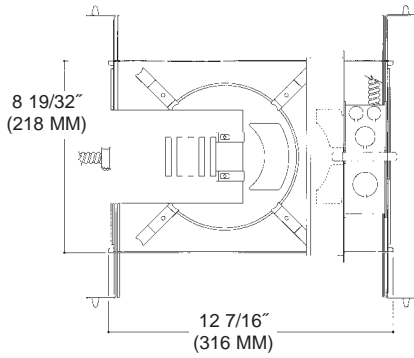
|       |                                   |       |                    |
|-------|-----------------------------------|-------|--------------------|
| ST277 | - Step Down Transformer (277:115) | CB517 | - Caddy Bars (517) |
| FS    | - Fuse                            | CB520 | - Caddy Bars (520) |
| RM    | - Old Work Remodeler Housing      |       |                    |



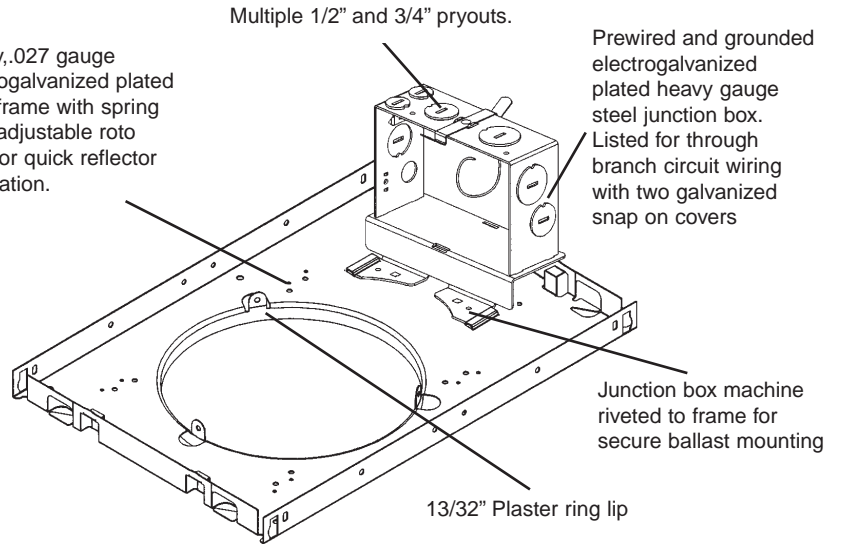
6"

Horizontal Incandescent (A-Lamp)

## 6" Horizontal Incandescent



Heavy, .027 gauge electrogalvanized plated steel frame with spring steel adjustable roto clips for quick reflector installation.



### Frame Options

**CFM** - Custom Frame Modifications (*consult factory*)  
**SA\*\*** - Slope Ceiling Adaptor (White Finish Standard)

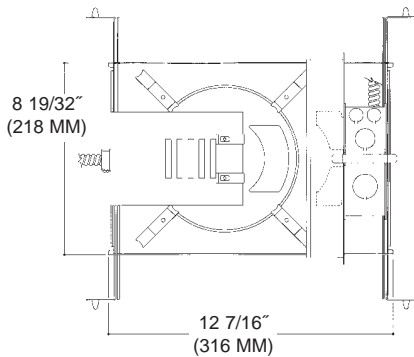
\*\* - specify slope degrees in 5° increments up to 45°

### Trim Options

**PFL** - Polish Flange  
**TLP** - Top Re-lamp Modifications  
**FGSK** - Flange Gasket  
**GR** - Goof Ring\*

\* - specify I.D. and O.D. standard white finish

## 6" Horizontal Incandescent



### Additional Product Info

#### Reflector

Single piece hand spun low iridescent Alzak® reflector with standard self trim flange and a white trim finish. 45° Lamp cutoff allows for a better visual cutoff than generally available.

High polish flange, white and black trim finish's available consult factory.

#### Socket

Aluminum, heat disipating socket cup vertically mounts to reflector by means of a firm locking adjustable husk clip. UL Listed, porcelain medium base socket.

#### Frame

Prewired electrogalvanized heavy steel junction box listed for through branch circuit wiring with 1/2" & 3/4" pryouts. Electrogalvanized plated steel housing with adjustable spring steel roto clips allowing for a quick trim installation.

Thermally protected 120V thermal cutout factory wired.

Housing accomodates any ceilings with a max. thickness of 1 3/4"

Same housing accomodates an open, lens, or wall wash reflector.

### Frame Options

**CFM** - Custom Frame Modifications (*consult factory*)  
**SA\*\*** - Slope Ceiling Adaptor (White Finish Standard)

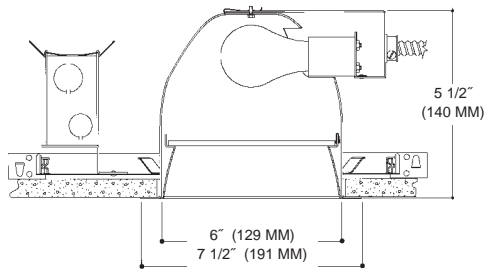
\*\* - specify slope degrees in 5° increments up to 45°

### Trim Options

**PFL** - Polish Flange  
**TLP** - Top Re-lamp Modifications  
**FGSK** - Flange Gasket  
**GR** - Goof Ring\*

\* - specify I.D. and O.D. standard white finish

## ENCLOSED LENS REFLECTOR



Aperture: 6", Ceiling Cutout: 6 1/4", OD: 7 1/2"

### Housing

| Part #                      | Description               |
|-----------------------------|---------------------------|
| H600                        | 6" 100W Max. Incandescent |
| <b>Suitable Lamp Types:</b> |                           |
| A19/A21                     |                           |

### Trim

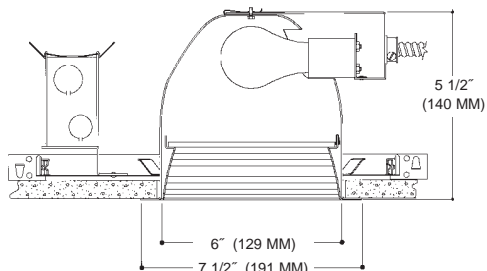
| Part #   | Description                       |
|--|-----------------------------------|
| <b>C73 Prismatic Lens</b>                          |                                   |
| H630SPCL   | Specular Clear Alzak® Reflector   |
| H630WH   | - Matte White Splay               |
| <b>Fresnel Lens</b>                                |                                   |
| H632SPCL   | - Specular Clear Alzak® Reflector |
| H632WH   | - Matte White Splay               |
| <b>Clear Lens</b>                                  |                                   |
| H636SPCL   | - Specular Clear Alzak® Reflector |
| H636WH   | - Matte White Splay               |
| More Color Options Available See Page 6            |                                   |
| Factory Standard is a Low Iridescent Alzak® finish |                                   |
| Alzak® is a registered trademark of ALCOA          |                                   |

### Accessories

|       |                                   |       |                    |
|-------|-----------------------------------|-------|--------------------|
| ST277 | - Step Down Transformer (277:115) | CB517 | - Caddy Bars (517) |
| FS    | - Fuse                            | CB520 | - Caddy Bars (520) |
| RM    | - Old Work Remodeler Housing      |       |                    |



## ENCLOSED BAFFLED LENS REFLECTOR



Aperture: 6", Ceiling Cutout: 6 1/4", OD: 7 1/2"

### Housing

| Part #                      | Description               |
|-----------------------------|---------------------------|
| H600                        | 6" 100W Max. Incandescent |
| <b>Suitable Lamp Types:</b> |                           |
| A19/A21                     |                           |

### Trim

| Part #   | Description                       |
|--|-----------------------------------|
| <b>C73 Prismatic Lens</b>                          |                                   |
| H660BL   | - Black Multi-Groove Baffle Splay |
| H660WH   | - White Multi-Groove Baffle Splay |
| <b>Fresnel Lens</b>                                |                                   |
| H662BL   | - Black Multi-Groove Baffle Splay |
| H662WH   | - White Multi-Groove Baffle Splay |
| <b>Clear Lens</b>                                  |                                   |
| H666BL   | - Black Multi-Groove Baffle Splay |
| H666WH   | - White Multi-Groove Baffle Splay |
| More Color Options Available See Page 6            |                                   |
| Factory Standard is a Low Iridescent Alzak® finish |                                   |
| Alzak® is a registered trademark of ALCOA          |                                   |

### Accessories

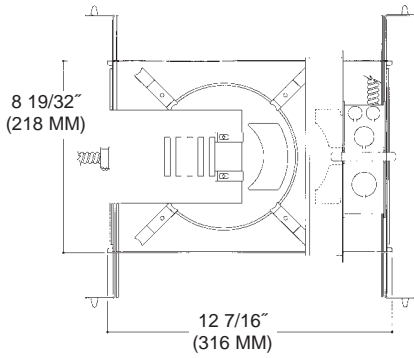
|       |                                   |       |                    |
|-------|-----------------------------------|-------|--------------------|
| ST277 | - Step Down Transformer (277:115) | CB517 | - Caddy Bars (517) |
| FS    | - Fuse                            | CB520 | - Caddy Bars (520) |
| RM    | - Old Work Remodeler Housing      |       |                    |



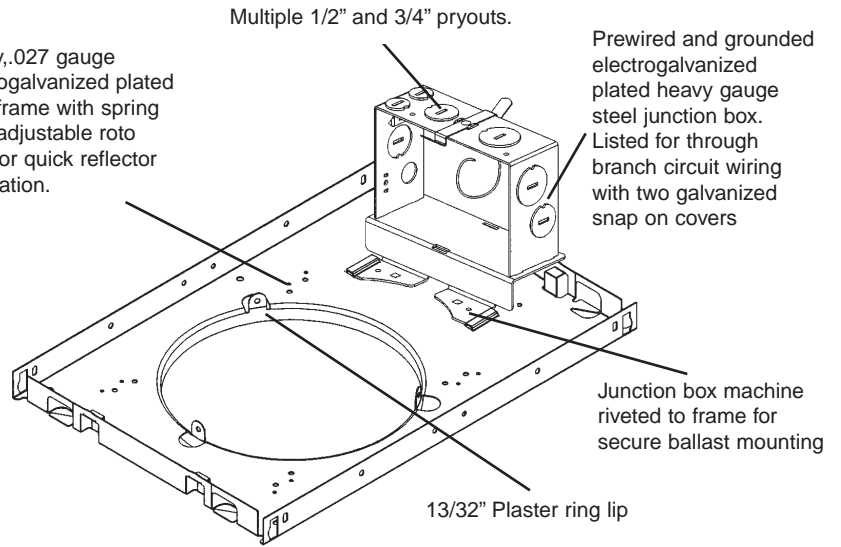
6"

Horizontal Incandescent (A-Lamp)

## 6" Horizontal Incandescent



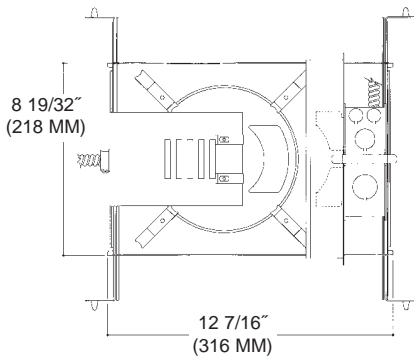
Heavy, .027 gauge electrogalvanized plated steel frame with spring steel adjustable roto clips for quick reflector installation.



| Frame Options  |
|--|
| <p><b>CFM</b> - Custom Frame Modifications (<i>consult factory</i>)</p> <p><b>SA**</b> - Slope Ceiling Adaptor (White Finish Standard)</p> |
| <p>** - specify slope degrees in 5° increments up to 45°</p>   |

| Trim Options   |
|--|
| <p><b>PFL</b> - Polish Flange</p> <p><b>TLP</b> - Top Re-lamp Modifications</p> <p><b>FGSK</b> - Flange Gasket</p> <p><b>GR</b> - Goof Ring*</p> |
| <p>* - specify I.D. and O.D. standard white finish</p>   |

## 6" Horizontal Incandescent



### Additional Product Info

#### Reflector

Single piece hand spun low iridescent Alzak® reflector with standard self trim flange and a white trim finish. 45° Lamp cutoff allows for a better visual cutoff than generally available. High polish flange, white and black trim finish's available consult factory.

#### Socket

Aluminum, heat dissipating socket cup vertically mounts to reflector by means of a firm locking adjustable husk clip. UL Listed, porcelain medium base socket.

#### Frame

Prewired electrogalvanized heavy steel junction box listed for through branch circuit wiring with 1/2" & 3/4" pryouts. Electrogalvanized plated steel housing with adjustable spring steel roto clips allowing for a quick trim installation.

Thermally protected 120V thermal cutout factory wired.

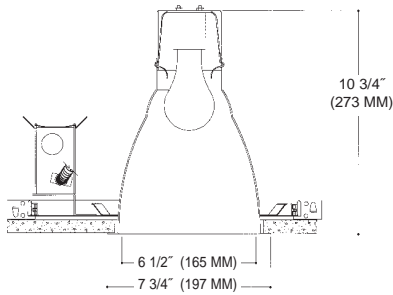
Housing accommodates any ceilings with a max. thickness of 1 3/4"

Same housing accommodates an open, lens, or wall wash reflector.

| Frame Options  |
|--|
| <p><b>CFM</b> - Custom Frame Modifications (<i>consult factory</i>)</p> <p><b>SA**</b> - Slope Ceiling Adaptor (White Finish Standard)</p> |
| <p>** - specify slope degrees in 5° increments up to 45°</p>   |

| Trim Options   |
|--|
| <p><b>PFL</b> - Polish Flange</p> <p><b>TLP</b> - Top Re-lamp Modifications</p> <p><b>FGSK</b> - Flange Gasket</p> <p><b>GR</b> - Goof Ring*</p> |
| <p>* - specify I.D. and O.D. standard white finish</p>   |

## OPEN REFLECTOR



Aperture: 6 1/2", Ceiling Cutout: 6 3/4", OD: 7 3/4"

### Housing

| Part #                      | Description               |
|-----------------------------|---------------------------|
| V700                        | 7" 150W Max. Incandescent |
| <b>Suitable Lamp Types:</b> |                           |
| A19/A21/A23/PS25, BR40      |                           |
| Par16/Par20/Par30/Par38     |                           |

### Trim

| Part #   | Description                      |
|----------|----------------------------------|
| V710SPCL | Specular Clear Alzak® Reflector  |
| V710SPGO | Specular Gold Alzak® Reflector   |
| V710SPWT | Specular Wheat Alzak® Reflector  |
| V710SPPW | Specular Pewter Alzak® Reflector |
| V710SPUM | Specular Umber Alzak® Reflector  |
| V710SPBL | Specular Black Alzak® Reflector  |
| V710WH   | Matte White Reflector            |

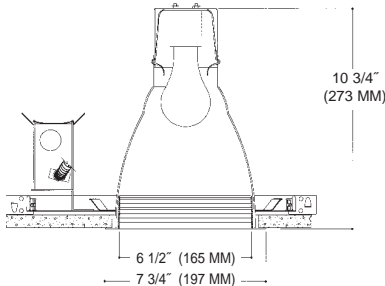
More Color Options Available See Page 6  
 Factory Standard is a Low Iridescent Alzak® finish  
 Alzak® is a registered trademark of ALCOA

### Accessories

|       |                                   |       |                    |
|-------|-----------------------------------|-------|--------------------|
| ST277 | - Step Down Transformer (277:115) | CB517 | - Caddy Bars (517) |
| FS    | - Fuse                            | CB520 | - Caddy Bars (520) |
| RM    | - Old Work Remodeler Housing      |       |                    |



## OPEN BAFFLE REFLECTOR



Aperture: 6 1/2", Ceiling Cutout: 6 3/4", OD: 7 3/4"

### Housing

| Part #                      | Description               |
|-----------------------------|---------------------------|
| V700                        | 7" 150W Max. Incandescent |
| <b>Suitable Lamp Types:</b> |                           |
| A19/A21/A23/PS25, BR40      |                           |
| Par16/Par20/Par30/Par38     |                           |

### Trim

| Part #                           | Description                     |
|----------------------------------|---------------------------------|
| <b>Black Multi-Groove Baffle</b> |                                 |
| V721SPCL                         | Specular Clear Alzak® Reflector |
| V721SPGO                         | Specular Gold Alzak® Reflector  |
| V721WH                           | Matte White Reflector           |
| <b>White Multi-Groove Baffle</b> |                                 |
| V722SPCL                         | Specular Clear Alzak® Reflector |
| V722SPGO                         | Specular Gold Alzak® Reflector  |
| V722WH                           | Matte White Reflector           |

More Color Options Available See Page 6  
 Factory Standard is a Low Iridescent Alzak® finish  
 Alzak® is a registered trademark of ALCOA

### Accessories

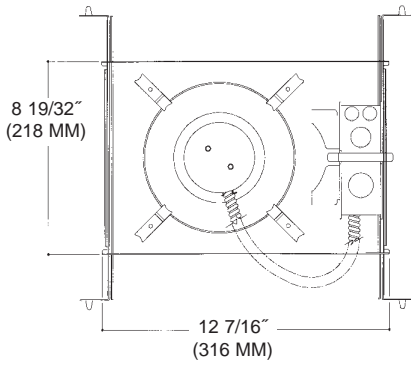
|       |                                   |       |                    |
|-------|-----------------------------------|-------|--------------------|
| ST277 | - Step Down Transformer (277:115) | CB517 | - Caddy Bars (517) |
| FS    | - Fuse                            | CB520 | - Caddy Bars (520) |
| RM    | - Old Work Remodeler Housing      |       |                    |



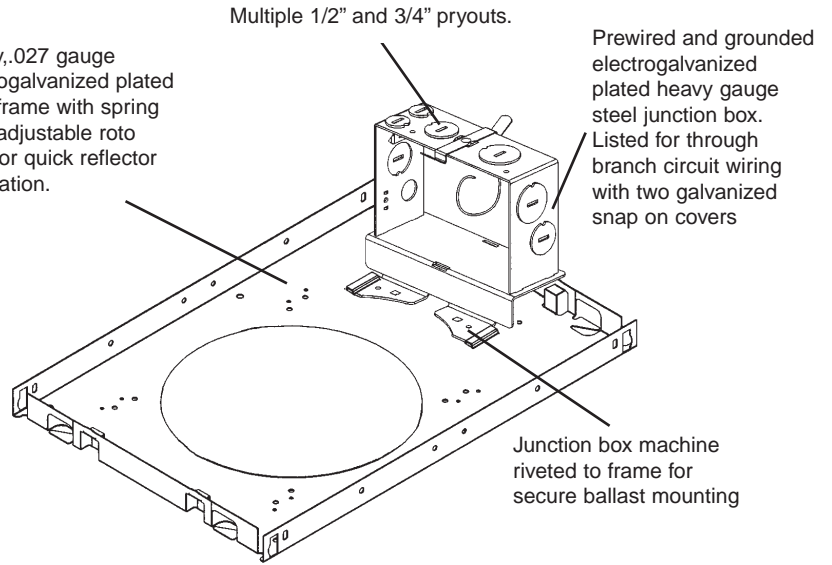
7"

Vertical Incandescent (Par / A-Lamp)

### 7" Vertical Incandescent



Heavy .027 gauge electrogalvanized plated steel frame with spring steel adjustable roto clips for quick reflector installation.



Multiple 1/2" and 3/4" pryouts.

Prewired and grounded electrogalvanized plated heavy gauge steel junction box. Listed for through branch circuit wiring with two galvanized snap on covers

Junction box machine riveted to frame for secure ballast mounting

#### Frame Options

- CFM** - Custom Frame Modifications (*consult factory*)
- SA\*\*** - Slope Ceiling Adaptor (White Finish Standard)

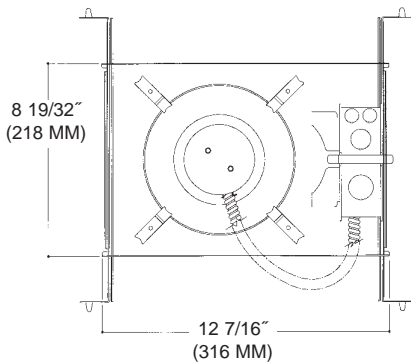
\*\* - specify slope degrees in 5° increments up to 45°

#### Trim Options

- PFL** - Polish Flange
- TLP** - Top Re-lamp Modifications
- FGSK** - Flange Gasket
- GR** - Goof Ring\*

\* - specify I.D. and O.D. standard white finish

### 7" Vertical Incandescent



#### Additional Product Info

##### Reflector

Single piece hand spun low iridescent Alzak® reflector with standard self trim flange and a white trim finish. 45° Lamp cutoff allows for a better visual cutoff than generally available. High polish flange, white and black trim finish's available consult factory.

##### Socket

Aluminum, heat dissipating socket cup vertically mounts to reflector by means of a firm locking adjustable husk clip. UL Listed, porcelain medium base socket.

##### Frame

Prewired electrogalvanized heavy steel junction box listed for through branch circuit wiring with 1/2" & 3/4" pryouts. Electrogalvanized plated steel housing with adjustable spring steel roto clips allowing for a quick trim installation.

Thermally protected 120V thermal cutout factory wired.

Housing accommodates any ceilings with a max. thickness of 1 3/4"

Same housing accommodates an open, lens, or wall wash reflector.

#### Frame Options

- CFM** - Custom Frame Modifications (*consult factory*)
- SA\*\*** - Slope Ceiling Adaptor (White Finish Standard)

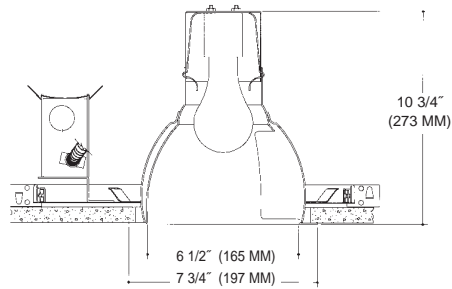
\*\* - specify slope degrees in 5° increments up to 45°

#### Trim Options

- PFL** - Polish Flange
- TLP** - Top Re-lamp Modifications
- FGSK** - Flange Gasket
- GR** - Goof Ring\*

\* - specify I.D. and O.D. standard white finish

## OPEN WALL WASH REFLECTOR



Aperture: 6 1/2", Ceiling Cutout: 6 3/4", OD: 7 3/4"

### Housing

| Part #                      | Description               |
|-----------------------------|---------------------------|
| V700                        | 7" 150W Max. Incandescent |
| <b>Suitable Lamp Types:</b> |                           |
| A19/A21/A23/PS25, BR40      |                           |
| Par16/Par20/Par30/Par38     |                           |

### Trim

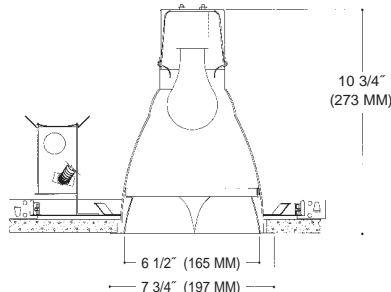
| Part #  | Description                       |
|---|-----------------------------------|
| <b>Single Wall Wash</b>                                   |                                   |
| V781SPCL  | - Specular Clear Alzak® Reflector |
| V781SPGO  | - Specular Gold Alzak® Reflector  |
| V781WH  | - Matte White Reflector           |
| <b>More Color Options Available See Page 6</b>            |                                   |
| <b>Factory Standard is a Low Iridescent Alzak® finish</b> |                                   |
| <b>Alzak® is a registered trademark of ALCOA</b>          |                                   |

### Accessories

|       |                                   |       |                    |
|-------|-----------------------------------|-------|--------------------|
| ST277 | - Step Down Transformer (277:115) | CB517 | - Caddy Bars (517) |
| FS    | - Fuse                            | CB520 | - Caddy Bars (520) |
| RM    | - Old Work Remodeler Housing      |       |                    |



## PARABOLIC LOUVER REFLECTOR



Aperture: 6 1/2", Ceiling Cutout: 6 3/4", OD: 7 3/4"

### Housing

| Part #                      | Description               |
|-----------------------------|---------------------------|
| V700                        | 7" 150W Max. Incandescent |
| <b>Suitable Lamp Types:</b> |                           |
| A19/A21/A23/PS25, BR40      |                           |
| Par16/Par20/Par30/Par38     |                           |

### Trim

| Part #  | Description                        |
|---|------------------------------------|
| VXB710SPCL  | - Specular Clear Alzak® Reflector  |
| VXB710SPGO  | - Specular Gold Alzak® Reflector   |
| VXB710SPWT  | - Specular Wheat Alzak® Reflector  |
| VXB710SPPW  | - Specular Pewter Alzak® Reflector |
| VXB710SPUM  | - Specular Umber Alzak® Reflector  |
| VXB710SPBL  | - Specular Black Alzak® Reflector  |
| VXB710WH  | - Matte White Reflector            |
| <b>More Color Options Available See Page 6</b>            |                                    |
| <b>Factory Standard is a Low Iridescent Alzak® finish</b> |                                    |
| <b>Alzak® is a registered trademark of ALCOA</b>          |                                    |

### Accessories

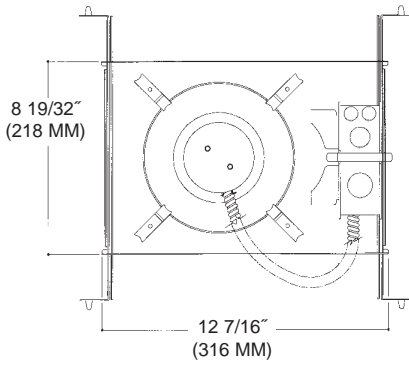
|       |                                   |       |                    |
|-------|-----------------------------------|-------|--------------------|
| ST277 | - Step Down Transformer (277:115) | CB517 | - Caddy Bars (517) |
| FS    | - Fuse                            | CB520 | - Caddy Bars (520) |
| RM    | - Old Work Remodeler Housing      |       |                    |



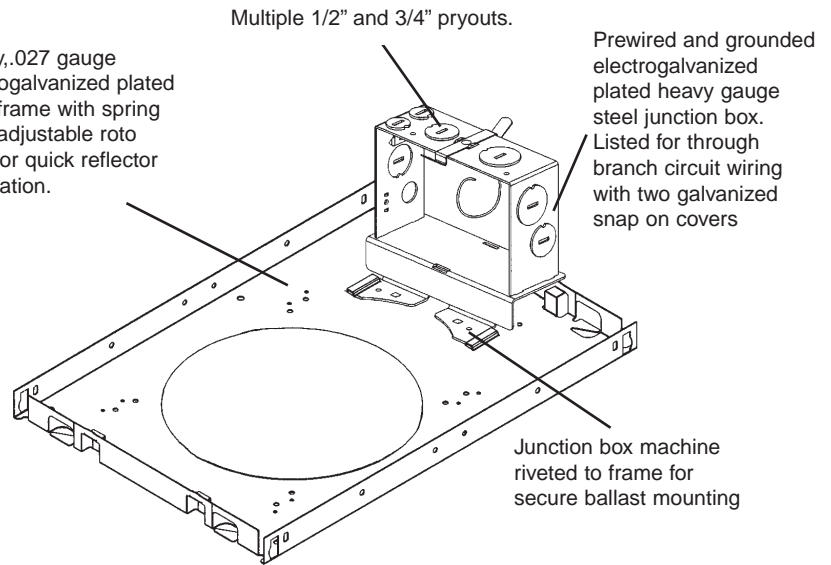
7"

Vertical Incandescent (Par / A-Lamp)

## 7" Vertical Incandescent



Heavy .027 gauge electrogalvanized plated steel frame with spring steel adjustable roto clips for quick reflector installation.



Multiple 1/2" and 3/4" pryouts.

Prewired and grounded electrogalvanized heavy gauge steel junction box. Listed for through branch circuit wiring with two galvanized snap on covers

Junction box machine riveted to frame for secure ballast mounting

### Frame Options

- CFM** - Custom Frame Modifications (*consult factory*)
- SA\*\*** - Slope Ceiling Adaptor (White Finish Standard)

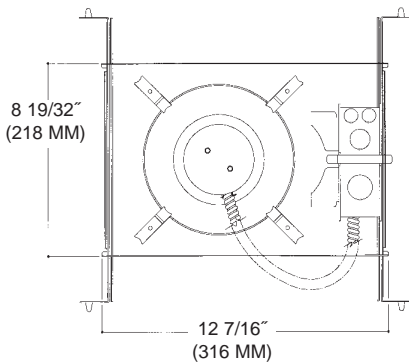
\*\* - specify slope degrees in 5° increments up to 45°

### Trim Options

- PFL** - Polish Flange
- TLP** - Top Re-lamp Modifications
- FGSK** - Flange Gasket
- GR** - Goof Ring\*

\* - specify I.D. and O.D. standard white finish

## 7" Vertical Incandescent



### Additional Product Info

#### Reflector

Single piece hand spun low iridescent Alzak® reflector with standard self trim flange and a white trim finish. 45° Lamp cutoff allows for a better visual cutoff than generally available. High polish flange, white and black trim finish's available consult factory.

#### Socket

Aluminum, heat dissipating socket cup vertically mounts to reflector by means of a firm locking adjustable husk clip. UL Listed, porcelain medium base socket.

#### Frame

Prewired electrogalvanized heavy steel junction box listed for through branch circuit wiring with 1/2" & 3/4" pryouts. Electrogalvanized plated steel housing with adjustable spring steel roto clips allowing for a quick trim installation.

Thermally protected 120V thermal cutout factory wired.

Housing accommodates any ceilings with a max. thickness of 1 3/4"

Same housing accommodates an open, lens, or wall wash reflector.

### Frame Options

- CFM** - Custom Frame Modifications (*consult factory*)
- SA\*\*** - Slope Ceiling Adaptor (White Finish Standard)

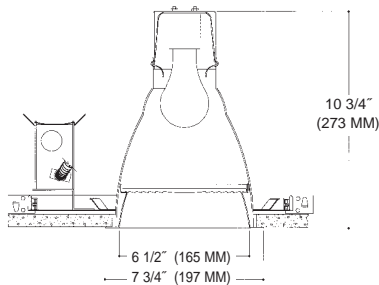
\*\* - specify slope degrees in 5° increments up to 45°

### Trim Options

- PFL** - Polish Flange
- TLP** - Top Re-lamp Modifications
- FGSK** - Flange Gasket
- GR** - Goof Ring\*

\* - specify I.D. and O.D. standard white finish

## ENCLOSED LENS REFLECTOR



Aperture: 6 1/2", Ceiling Cutout: 6 3/4", OD: 7 3/4"

### Housing

| Part #                      | Description               |
|-----------------------------|---------------------------|
| V700                        | 7" 100W Max. Incandescent |
| <b>Suitable Lamp Types:</b> |                           |
| A19/A21/A23/PS25, BR40      |                           |
| Par16/Par20/Par30/Par38     |                           |

### Trim

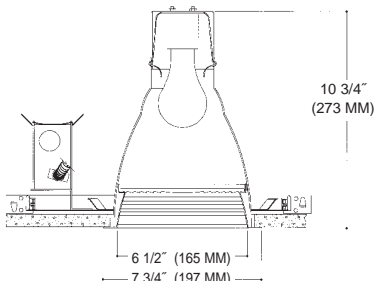
| Part #   | Description                               |
|--|---|
| <b>C73 Prismatic Lens</b>                                  |   |
| V730SPCL   | - Specular Clear <i>Alzak</i> ® Reflector |
| V730WH   | - Matte White Splay                       |
| <b>Fresnel Lens</b>  |   |
| V732SPCL   | - Specular Clear <i>Alzak</i> ® Reflector |
| V732WH   | - Matte White Splay                       |
| <b>Clear Lens</b>  |   |
| V732SPCL   | - Specular Clear <i>Alzak</i> ® Reflector |
| V732WH   | - Matte White Splay                       |
| More Color Options Available See Page 6                    |   |
| Factory Standard is a Low Iridescent <i>Alzak</i> ® finish |   |
| <i>Alzak</i> ® is a registered trademark of ALCOA          |   |

### Accessories

|       |                                   |       |                    |
|-------|-----------------------------------|-------|--------------------|
| ST277 | - Step Down Transformer (277:115) | CB517 | - Caddy Bars (517) |
| FS    | - Fuse                            | CB520 | - Caddy Bars (520) |
| RM    | - Old Work Remodeler Housing      |       |                    |



## ENCLOSED BAFFLED LENS REFLECTOR



Aperture: 6 1/2", Ceiling Cutout: 6 3/4", OD: 7 3/4"

### Housing

| Part #                      | Description               |
|-----------------------------|---------------------------|
| V700                        | 7" 100W Max. Incandescent |
| <b>Suitable Lamp Types:</b> |                           |
| A19/A21/A23/PS25, BR40      |                           |
| Par16/Par20/Par30/Par38     |                           |

### Trim

| Part #   | Description                       |
|--|-----------------------------------|
| <b>C73 Prismatic Lens</b>                                  |                                   |
| V760BL   | - Black Multi-Groove Baffle Splay |
| V760WH   | - White Multi-Groove Baffle Splay |
| <b>Fresnel Lens</b>  |                                   |
| V762BL   | - Black Multi-Groove Baffle Splay |
| V762WH   | - White Multi-Groove Baffle Splay |
| <b>Clear Lens</b>  |                                   |
| V766BL   | - Black Multi-Groove Baffle Splay |
| V766WH   | - White Multi-Groove Baffle Splay |
| More Color Options Available See Page 6                    |                                   |
| Factory Standard is a Low Iridescent <i>Alzak</i> ® finish |                                   |
| <i>Alzak</i> ® is a registered trademark of ALCOA          |                                   |

### Accessories

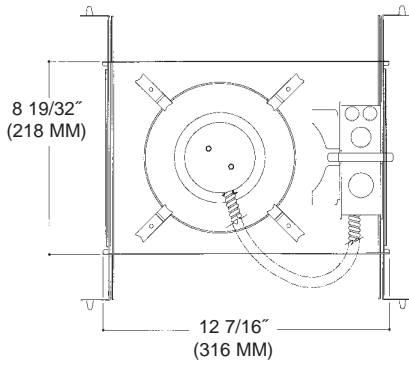
|       |                                   |       |                    |
|-------|-----------------------------------|-------|--------------------|
| ST277 | - Step Down Transformer (277:115) | CB517 | - Caddy Bars (517) |
| FS    | - Fuse                            | CB520 | - Caddy Bars (520) |
| RM    | - Old Work Remodeler Housing      |       |                    |



7"

Vertical Incandescent (Par / A-Lamp)

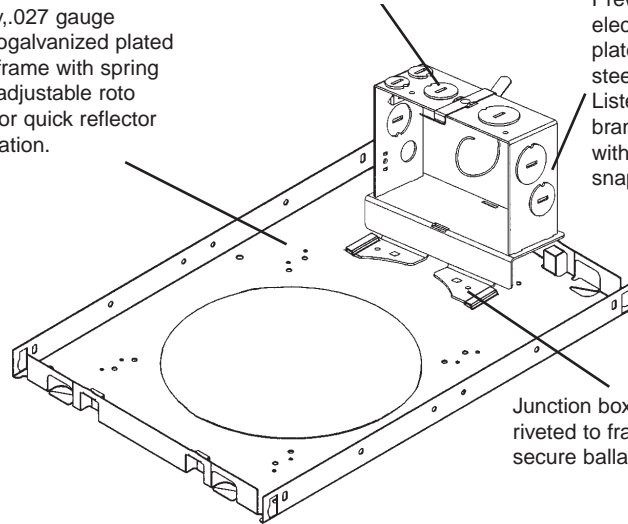
## 7" Vertical Incandescent



Heavy .027 gauge electrogalvanized plated steel frame with spring steel adjustable roto clips for quick reflector installation.

Multiple 1/2" and 3/4" pryouts.

Prewired and grounded electrogalvanized heavy gauge steel junction box. Listed for through branch circuit wiring with two galvanized snap on covers



Junction box machine riveted to frame for secure ballast mounting

### Frame Options

- CFM** - Custom Frame Modifications (*consult factory*)
- SA\*\*** - Slope Ceiling Adaptor (White Finish Standard)

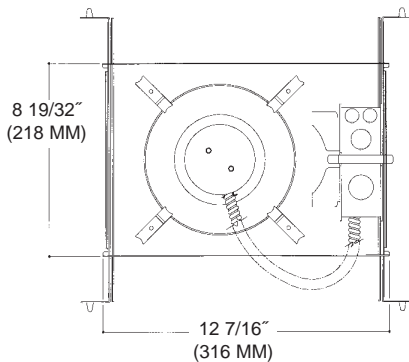
\*\* - specify slope degrees in 5° increments up to 45°

### Trim Options

- PFL** - Polish Flange
- TLP** - Top Re-lamp Modifications
- FGSK** - Flange Gasket
- GR** - Goof Ring\*

\* - specify I.D. and O.D. standard white finish

## 7" Vertical Incandescent



### Additional Product Info

#### Reflector

Single piece hand spun low iridescent Alzak® reflector with standard self trim flange and a white trim finish. 45° Lamp cutoff allows for a better visual cutoff than generally available. High polish flange, white and black trim finish's available consult factory.

#### Socket

Aluminum, heat dissipating socket cup vertically mounts to reflector by means of a firm locking adjustable husk clip. UL Listed, porcelain medium base socket.

#### Frame

Prewired electrogalvanized heavy steel junction box listed for through branch circuit wiring with 1/2" & 3/4" pryouts. Electrogalvanized plated steel housing with adjustable spring steel roto clips allowing for a quick trim installation.

Thermally protected 120V thermal cutout factory wired.

Housing accommodates any ceilings with a max. thickness of 1 3/4"

Same housing accommodates an open, lens, or wall wash reflector.

### Frame Options

- CFM** - Custom Frame Modifications (*consult factory*)
- SA\*\*** - Slope Ceiling Adaptor (White Finish Standard)

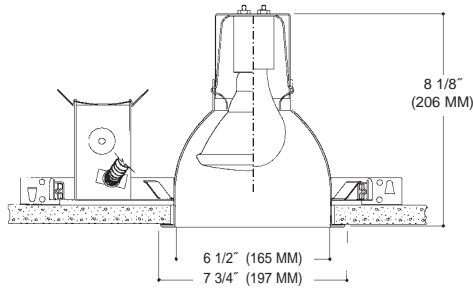
\*\* - specify slope degrees in 5° increments up to 45°

### Trim Options

- PFL** - Polish Flange
- TLP** - Top Re-lamp Modifications
- FGSK** - Flange Gasket
- GR** - Goof Ring\*

\* - specify I.D. and O.D. standard white finish

## SHALLOW OPEN REFLECTOR



Aperture: 6 1/2", Ceiling Cutout: 6 3/4", OD: 7 3/4"

### Housing

| Part #                      | Description               |
|-----------------------------|---------------------------|
| V700                        | 7" 150W Max. Incandescent |
| <b>Suitable Lamp Types:</b> |                           |
| A19/A21/A23/PS25, BR40      |                           |
| Par16/Par20/Par30/Par38     |                           |

### Trim

| Part #    | Description                                |
|-----------|--|
| VS710SPCL | - Specular Clear <i>Alzak</i> ® Reflector  |
| VS710SPGO | - Specular Gold <i>Alzak</i> ® Reflector   |
| VS710SPWT | - Specular Wheat <i>Alzak</i> ® Reflector  |
| VS710SPPW | - Specular Pewter <i>Alzak</i> ® Reflector |
| VS710SPUM | - Specular Umber <i>Alzak</i> ® Reflector  |
| VS710SPBL | - Specular Black <i>Alzak</i> ® Reflector  |
| VS710WH   | - Matte White Reflector                    |

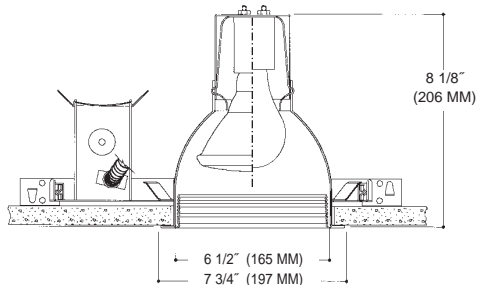
More Color Options Available See Page 6  
 Factory Standard is a Low Iridescent *Alzak*® finish  
*Alzak*® is a registered trademark of ALCOA

### Accessories

|       |                                   |       |                    |
|-------|-----------------------------------|-------|--------------------|
| ST277 | - Step Down Transformer (277:115) | CB517 | - Caddy Bars (517) |
| FS    | - Fuse                            | CB520 | - Caddy Bars (520) |
| RM    | - Old Work Remodeler Housing      |       |                    |



## SHALLOW OPEN BAFFLE REFLECTOR



Aperture: 6 1/2", Ceiling Cutout: 6 3/4", OD: 7 7/8"

### Housing

| Part #                      | Description               |
|-----------------------------|---------------------------|
| V700                        | 7" 150W Max. Incandescent |
| <b>Suitable Lamp Types:</b> |                           |
| A19/A21/A23/PS25, BR40      |                           |
| Par16/Par20/Par30/Par38     |                           |

### Trim

| Part #                           | Description                               |
|----------------------------------|---|
| <b>Black Multi-Groove Baffle</b> |   |
| VS721SPCL                        | - Specular Clear <i>Alzak</i> ® Reflector |
| VS721SPGO                        | - Specular Gold <i>Alzak</i> ® Reflector  |
| VS721WH                          | - Matte White Reflector                   |
| <b>White Multi-Groove Baffle</b> |   |
| VS722SPCL                        | - Specular Clear <i>Alzak</i> ® Reflector |
| VS722SPGO                        | - Specular Gold <i>Alzak</i> ® Reflector  |
| VS722WH                          | - Matte White Reflector                   |

More Color Options Available See Page 6  
 Factory Standard is a Low Iridescent *Alzak*® finish  
*Alzak*® is a registered trademark of ALCOA

### Accessories

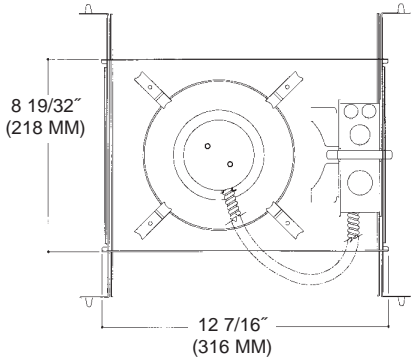
|       |                                   |       |                    |
|-------|-----------------------------------|-------|--------------------|
| ST277 | - Step Down Transformer (277:115) | CB517 | - Caddy Bars (517) |
| FS    | - Fuse                            | CB520 | - Caddy Bars (520) |
| RM    | - Old Work Remodeler Housing      |       |                    |



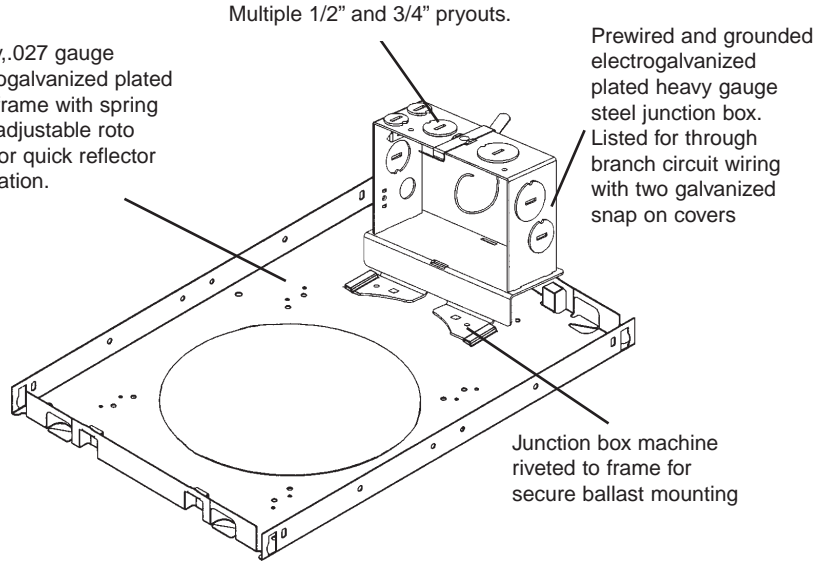
7"

Vertical Shallow Incandescent (Par / A-Lamp)

## 7" Vertical Shallow Incandescent



Heavy, .027 gauge electrogalvanized plated steel frame with spring steel adjustable roto clips for quick reflector installation.



### Frame Options

- CFM** - Custom Frame Modifications (*consult factory*)
- SA\*\*** - Slope Ceiling Adaptor (White Finish Standard)

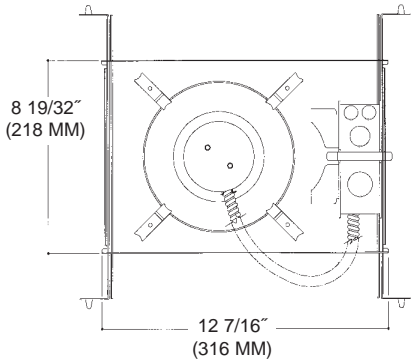
\*\* - specify slope degrees in 5° increments up to 45°

### Trim Options

- PFL** - Polish Flange
- TLP** - Top Re-lamp Modifications
- FGSK** - Flange Gasket
- GR** - Goof Ring\*

\* - specify I.D. and O.D. standard white finish

## 7" Vertical Shallow Incandescent



### Additional Product Info

#### Reflector

Single piece hand spun low iridescent Alzak® reflector with standard self trim flange and a white trim finish. 45° Lamp cutoff allows for a better visual cutoff than generally available. High polish flange, white and black trim finish's available consult factory.

#### Socket

Aluminum, heat dissipating socket cup vertically mounts to reflector by means of a firm locking adjustable husk clip. UL Listed, porcelain medium base socket.

#### Frame

Prewired electrogalvanized heavy steel junction box listed for through branch circuit wiring with 1/2" & 3/4" pryouts. Electrogalvanized plated steel housing with adjustable spring steel roto clips allowing for a quick trim installation.

Thermally protected 120V thermal cutout factory wired.

Housing accommodates any ceilings with a max. thickness of 1 3/4"

Same housing accommodates an open, lens, or wall wash reflector.

### Frame Options

- CFM** - Custom Frame Modifications (*consult factory*)
- SA\*\*** - Slope Ceiling Adaptor (White Finish Standard)

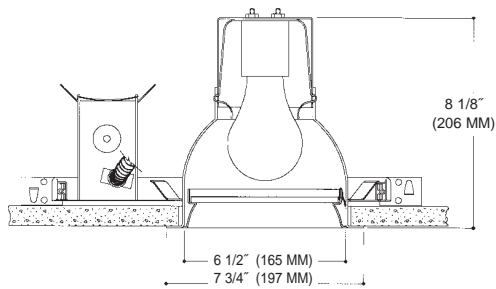
\*\* - specify slope degrees in 5° increments up to 45°

### Trim Options

- PFL** - Polish Flange
- TLP** - Top Re-lamp Modifications
- FGSK** - Flange Gasket
- GR** - Goof Ring\*

\* - specify I.D. and O.D. standard white finish

## SHALLOW ENCLOSED LENS REFLECTOR



Aperture: 6 1/2", Ceiling Cutout: 6 3/4", OD: 7 3/4"

### Housing

| Part #                      | Description               |
|-----------------------------|---------------------------|
| V700                        | 7" 150W Max. Incandescent |
| <b>Suitable Lamp Types:</b> |                           |
| A19/A21/A23/PS25, BR40      |                           |
| Par16/Par20/Par30           |                           |

### Trim

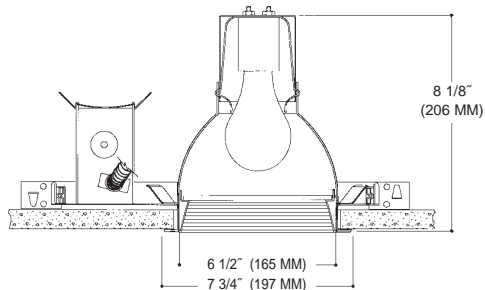
| Part #   | Description                               |
|--|---|
| <b>C73 Prismatic Lens</b>                                  |   |
| VS730SPCL  | - Specular Clear <i>Alzak</i> ® Reflector |
| VS730WH  | - Matte White Splay                       |
| <b>Fresnel Lens</b>  |   |
| VS732SPCL  | - Specular Clear <i>Alzak</i> ® Reflector |
| VS732WH  | - Matte White Splay                       |
| <b>Clear Lens</b>  |   |
| VS736SPCL  | - Specular Clear <i>Alzak</i> ® Reflector |
| VS736WH  | - Matte White Splay                       |
| More Color Options Available See Page 6                    |   |
| Factory Standard is a Low Iridescent <i>Alzak</i> ® finish |   |
| <i>Alzak</i> ® is a registered trademark of ALCOA          |   |

### Accessories

|       |                                   |       |                    |
|-------|-----------------------------------|-------|--------------------|
| ST277 | - Step Down Transformer (277:115) | CB517 | - Caddy Bars (517) |
| FS    | - Fuse                            | CB520 | - Caddy Bars (520) |
| RM    | - Old Work Remodeler Housing      |       |                    |



## SHALLOW ENCLOSED BAFFLED LENS REFLECTOR



Aperture: 6 1/2", Ceiling Cutout: 6 3/4", OD: 7 3/4"

### Housing

| Part #                      | Description               |
|-----------------------------|---------------------------|
| V700                        | 7" 150W Max. Incandescent |
| <b>Suitable Lamp Types:</b> |                           |
| A19/A21/A23/PS25, BR40      |                           |
| Par16/Par20/Par30           |                           |

### Trim

| Part #   | Description                       |
|--|-----------------------------------|
| <b>C73 Prismatic Lens</b>                                  |                                   |
| VS760BL  | - Black Multi-Groove Baffle Splay |
| VS760WH  | - White Multi-Groove Baffle Splay |
| <b>Fresnel Lens</b>  |                                   |
| VS762BL  | - Black Multi-Groove Baffle Splay |
| VS762WH  | - White Multi-Groove Baffle Splay |
| <b>Clear Lens</b>  |                                   |
| VS766BL  | - Black Multi-Groove Baffle Splay |
| VS766WH  | - White Multi-Groove Baffle Splay |
| More Color Options Available See Page 6                    |                                   |
| Factory Standard is a Low Iridescent <i>Alzak</i> ® finish |                                   |
| <i>Alzak</i> ® is a registered trademark of ALCOA          |                                   |

### Accessories

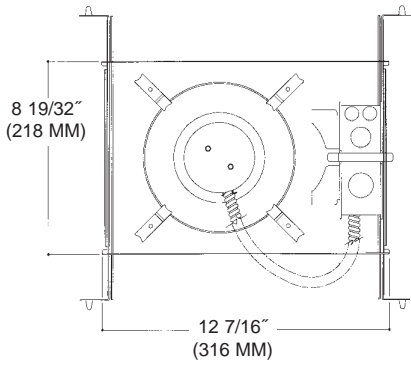
|       |                                   |       |                    |
|-------|-----------------------------------|-------|--------------------|
| ST277 | - Step Down Transformer (277:115) | CB517 | - Caddy Bars (517) |
| FS    | - Fuse                            | CB520 | - Caddy Bars (520) |
| RM    | - Old Work Remodeler Housing      |       |                    |



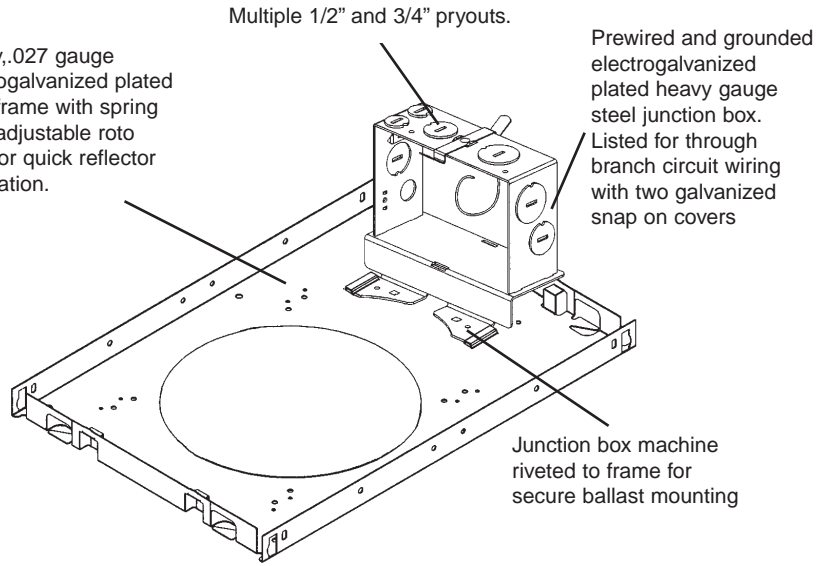
7"

Vertical Shallow Incandescent (Par / A-Lamp)

## 7" Vertical Shallow Incandescent



Heavy, .027 gauge electrogalvanized plated steel frame with spring steel adjustable roto clips for quick reflector installation.



Multiple 1/2" and 3/4" pryouts.

Prewired and grounded electrogalvanized plated heavy gauge steel junction box. Listed for through branch circuit wiring with two galvanized snap on covers

Junction box machine riveted to frame for secure ballast mounting

### Frame Options

- CFM - Custom Frame Modifications (*consult factory*)
- SA\*\* - Slope Ceiling Adaptor (White Finish Standard)

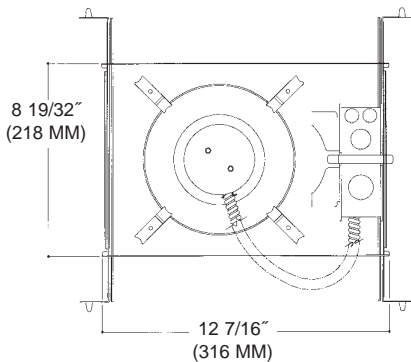
\*\* - specify slope degrees in 5° increments up to 45°

### Trim Options

- PFL - Polish Flange
- TLP - Top Re-lamp Modifications
- FGSK - Flange Gasket
- GR - Goof Ring\*

\* - specify I.D. and O.D. standard white finish

## 7" Vertical Shallow Incandescent



### Additional Product Info

#### Reflector

Single piece hand spun low iridescent Alzak® reflector with standard self trim flange and a white trim finish. 45° Lamp cutoff allows for a better visual cutoff than generally available.

High polish flange, white and black trim finish's available consult factory.

#### Socket

Aluminum, heat dissipating socket cup vertically mounts to reflector by means of a firm locking adjustable husk clip. UL Listed, porcelain medium base socket.

#### Frame

Prewired electrogalvanized heavy steel junction box listed for through branch circuit wiring with 1/2" & 3/4" pryouts. Electrogalvanized plated steel housing with adjustable spring steel roto clips allowing for a quick trim installation.

Thermally protected 120V thermal cutout factory wired.

Housing accommodates any ceilings with a max. thickness of 1 3/4"

Same housing accommodates an open, lens, or wall wash reflector.

### Frame Options

- CFM - Custom Frame Modifications (*consult factory*)
- SA\*\* - Slope Ceiling Adaptor (White Finish Standard)

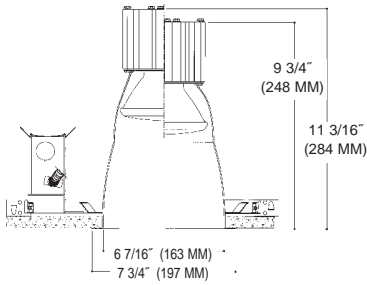
\*\* - specify slope degrees in 5° increments up to 45°

### Trim Options

- PFL - Polish Flange
- TLP - Top Re-lamp Modifications
- FGSK - Flange Gasket
- GR - Goof Ring\*

\* - specify I.D. and O.D. standard white finish

## MAXIMUM WATTAGE OPEN REFLECTOR



Aperture: 6 7/16", Ceiling Cutout: 6 3/4", OD: 7 3/4"

### Housing

| Part #       | Description                     |
|--------------|---------------------------------|
| V700MW-PAR30 | 7" Par30 250W Max. Incandescent |
| V700MW-PAR38 | 7" Par38 250W Max. Incandescent |

**Suitable Lamp Types:**  
Par16/Par20/Par30/Par38

### Trim

| Part #    | Description                        |
|-----------|------------------------------------|
| VM710SPCL | - Specular Clear Alzak® Reflector  |
| VM710SPGO | - Specular Gold Alzak® Reflector   |
| VM710SPWT | - Specular Wheat Alzak® Reflector  |
| VM710SPPW | - Specular Pewter Alzak® Reflector |
| VM710SPUM | - Specular Umber Alzak® Reflector  |
| VM710SPBL | - Specular Black Alzak® Reflector  |
| VM710WH   | - Matte White Reflector            |

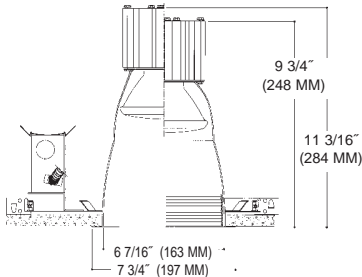
More Color Options Available See Page 6  
Factory Standard is a Low Iridescent Alzak® finish  
Alzak® is a registered trademark of ALCOA

### Accessories

|       |                                   |       |                    |
|-------|-----------------------------------|-------|--------------------|
| ST277 | - Step Down Transformer (277:115) | CB517 | - Caddy Bars (517) |
| FS    | - Fuse                            | CB520 | - Caddy Bars (520) |
| RM    | - Old Work Remodeler Housing      |       |                    |



## MAXIMUM WATTAGE OPEN BAFFLE REFLECTOR



Aperture: 6 7/16", Ceiling Cutout: 6 3/4", OD: 7 3/4"

### Housing

| Part #       | Description                     |
|--------------|---------------------------------|
| V700MW-PAR30 | 7" Par30 250W Max. Incandescent |
| V700MW-PAR38 | 7" Par38 250W Max. Incandescent |

**Suitable Lamp Types:**  
Par16/Par20/Par30/Par38

### Trim

| Part #                           | Description                       |
|----------------------------------|-----------------------------------|
| <b>Black Multi-Groove Baffle</b> |                                   |
| VM721SPCL                        | - Specular Clear Alzak® Reflector |
| VM721SPGO                        | - Specular Gold Alzak® Reflector  |
| VM721WH                          | - Matte White Reflector           |
| <b>White Multi-Groove Baffle</b> |                                   |
| VM722SPCL                        | - Specular Clear Alzak® Reflector |
| VM722SPGO                        | - Specular Gold Alzak® Reflector  |
| VM722WH                          | - Matte White Reflector           |

More Color Options Available See Page 6  
Factory Standard is a Low Iridescent Alzak® finish  
Alzak® is a registered trademark of ALCOA

### Accessories

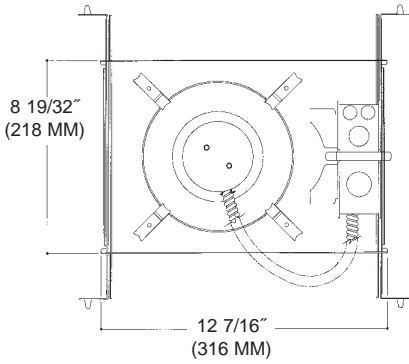
|       |                                   |       |                    |
|-------|-----------------------------------|-------|--------------------|
| ST277 | - Step Down Transformer (277:115) | CB517 | - Caddy Bars (517) |
| FS    | - Fuse                            | CB520 | - Caddy Bars (520) |
| RM    | - Old Work Remodeler Housing      |       |                    |



7"

Vertical Maximum Wattage Incandescent (Par Lamp)

**7" Vertical Maximum Wattage Incandescent**

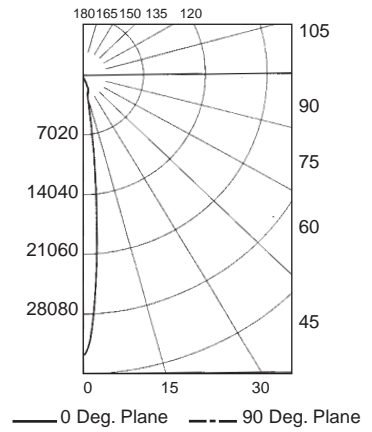


**Frame**  
**VMW700**

**Reflector**  
**VM710SPCL**

**LTL Test # 11293**

**Efficiency: 85.0%**  
**Total Lumens: 3600**  
**Lamp Source: 2x250W**  
Sylvania  
Q250PAR38/CAP/SPL/SP10



**Coefficients of Utilization**

| RC | 80  |     |     |     | 70 |    |    |    | 50 |    |    |    | 30 |    |    |    | 10 |    |    |    | 0  |    |    |  |
|----|-----|-----|-----|-----|----|----|----|----|----|----|----|----|----|----|----|----|----|----|----|----|----|----|----|--|
| RW | 70  | 50  | 30  | 10  | 70 | 50 | 30 | 10 | 50 | 30 | 10 | 50 | 30 | 10 | 50 | 30 | 10 | 50 | 30 | 10 | 50 | 30 | 10 |  |
| 0  | 101 | 101 | 101 | 101 | 99 | 99 | 99 | 99 | 94 | 94 | 94 | 90 | 90 | 90 | 87 | 87 | 87 | 85 |    |    |    |    |    |  |
| 1  | 98  | 96  | 94  | 93  | 96 | 94 | 92 | 91 | 91 | 90 | 89 | 88 | 87 | 86 | 85 | 84 | 84 | 82 |    |    |    |    |    |  |
| 2  | 95  | 91  | 89  | 87  | 93 | 90 | 88 | 86 | 87 | 86 | 84 | 85 | 84 | 83 | 83 | 82 | 81 | 80 |    |    |    |    |    |  |
| 3  | 92  | 87  | 84  | 82  | 90 | 86 | 84 | 82 | 84 | 82 | 81 | 83 | 81 | 79 | 81 | 79 | 78 | 77 |    |    |    |    |    |  |
| 4  | 89  | 84  | 81  | 79  | 88 | 83 | 80 | 78 | 82 | 79 | 77 | 80 | 78 | 77 | 79 | 77 | 76 | 75 |    |    |    |    |    |  |
| 5  | 86  | 81  | 78  | 76  | 85 | 81 | 78 | 75 | 79 | 77 | 75 | 78 | 76 | 74 | 77 | 75 | 74 | 73 |    |    |    |    |    |  |
| 6  | 84  | 79  | 75  | 73  | 83 | 78 | 75 | 73 | 77 | 74 | 72 | 76 | 74 | 72 | 75 | 73 | 72 | 71 |    |    |    |    |    |  |
| 7  | 82  | 76  | 73  | 71  | 81 | 76 | 73 | 71 | 75 | 72 | 70 | 74 | 72 | 70 | 73 | 71 | 70 | 69 |    |    |    |    |    |  |
| 8  | 80  | 74  | 71  | 69  | 79 | 74 | 71 | 68 | 73 | 70 | 68 | 72 | 70 | 68 | 72 | 69 | 68 | 67 |    |    |    |    |    |  |
| 9  | 78  | 72  | 69  | 67  | 77 | 72 | 69 | 67 | 71 | 68 | 66 | 71 | 68 | 66 | 70 | 68 | 66 | 65 |    |    |    |    |    |  |
| 10 | 76  | 70  | 67  | 65  | 75 | 70 | 67 | 65 | 70 | 67 | 65 | 69 | 66 | 65 | 69 | 66 | 64 | 64 |    |    |    |    |    |  |

**Cone of Light**

| Ft below | FC nadir | Dia @ 50% |
|----------|----------|-----------|
| 6.0      | 914.4    | 1.2       |
| 8.0      | 514.3    | 1.6       |
| 10.0     | 329.3    | 2.0       |
| 12.0     | 228.6    | 2.4       |
| 14.0     | 167.9    | 2.8       |
| 16.0     | 128.6    | 3.2       |

**Frame Options**

- CFM - Custom Frame Modifications (consult factory)
- SA\*\* - Slope Ceiling Adaptor (White Finish Standard)

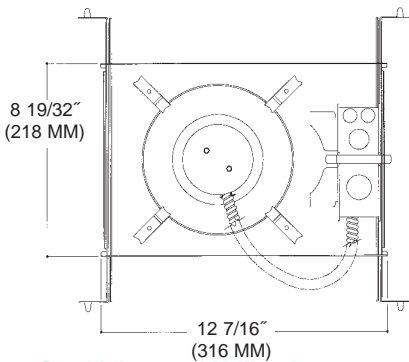
\*\* - specify slope degrees in 5° increments up to 45°

**Trim Options**

- PFL - Polish Flange
- TLP - Top Re-lamp Modifications
- FGSK - Flange Gasket
- GR - Goof Ring\*

\* - specify I.D. and O.D. standard white finish

**7" Vertical Maximum Wattage Incandescent**

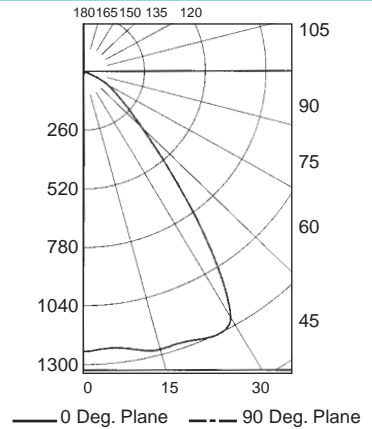


**Frame**  
**VMW700**

**Reflector**  
**VM710SPCL**

**LTL Test # 11292**

**Efficiency: 86.7%**  
**Total Lumens: 2480**  
**Lamp Source: 1x300W**  
Philips 300R/FL/1



**Coefficients of Utilization**

| RC | 80  |     |     |     | 70  |     |     |     | 50 |    |    |    | 30 |    |    |    | 10 |    |    |    | 0  |    |    |  |
|----|-----|-----|-----|-----|-----|-----|-----|-----|----|----|----|----|----|----|----|----|----|----|----|----|----|----|----|--|
| RW | 70  | 50  | 30  | 10  | 70  | 50  | 30  | 10  | 50 | 30 | 10 | 50 | 30 | 10 | 50 | 30 | 10 | 50 | 30 | 10 | 50 | 30 | 10 |  |
| 0  | 103 | 103 | 103 | 103 | 101 | 101 | 101 | 101 | 96 | 96 | 96 | 92 | 92 | 92 | 88 | 88 | 88 | 87 |    |    |    |    |    |  |
| 1  | 98  | 95  | 93  | 91  | 96  | 94  | 91  | 90  | 90 | 88 | 87 | 87 | 85 | 84 | 84 | 83 | 82 | 80 |    |    |    |    |    |  |
| 2  | 93  | 89  | 85  | 82  | 91  | 87  | 84  | 81  | 84 | 81 | 79 | 82 | 79 | 77 | 79 | 77 | 76 | 74 |    |    |    |    |    |  |
| 3  | 88  | 82  | 77  | 74  | 86  | 81  | 77  | 73  | 78 | 75 | 72 | 76 | 73 | 71 | 74 | 72 | 70 | 68 |    |    |    |    |    |  |
| 4  | 83  | 76  | 71  | 67  | 81  | 75  | 70  | 67  | 73 | 69 | 66 | 71 | 68 | 65 | 70 | 67 | 64 | 63 |    |    |    |    |    |  |
| 5  | 78  | 70  | 65  | 61  | 77  | 69  | 64  | 61  | 68 | 63 | 60 | 66 | 63 | 59 | 65 | 62 | 59 | 58 |    |    |    |    |    |  |
| 6  | 74  | 65  | 60  | 56  | 72  | 65  | 59  | 55  | 63 | 58 | 55 | 62 | 58 | 55 | 61 | 57 | 54 | 53 |    |    |    |    |    |  |
| 7  | 69  | 60  | 54  | 50  | 68  | 60  | 54  | 50  | 58 | 54 | 50 | 57 | 53 | 50 | 56 | 52 | 49 | 48 |    |    |    |    |    |  |
| 8  | 65  | 56  | 50  | 46  | 64  | 55  | 50  | 46  | 54 | 49 | 46 | 53 | 49 | 46 | 52 | 48 | 45 | 44 |    |    |    |    |    |  |
| 9  | 61  | 51  | 46  | 42  | 60  | 51  | 45  | 42  | 50 | 45 | 42 | 49 | 45 | 41 | 48 | 44 | 41 | 40 |    |    |    |    |    |  |
| 10 | 51  | 48  | 42  | 38  | 56  | 47  | 42  | 38  | 46 | 42 | 38 | 46 | 41 | 38 | 45 | 41 | 38 | 37 |    |    |    |    |    |  |

**Cone of Light**

| Ft below | FC nadir | Dia @ 50% |
|----------|----------|-----------|
| 6.0      | 34.5     | 7.9       |
| 8.0      | 19.4     | 10.5      |
| 10.0     | 12.4     | 13.1      |
| 12.0     | 8.6      | 15.7      |
| 14.0     | 6.3      | 18.4      |
| 16.0     | 4.9      | 21.0      |

**Frame Options**

- CFM - Custom Frame Modifications (consult factory)
- SA\*\* - Slope Ceiling Adaptor (White Finish Standard)

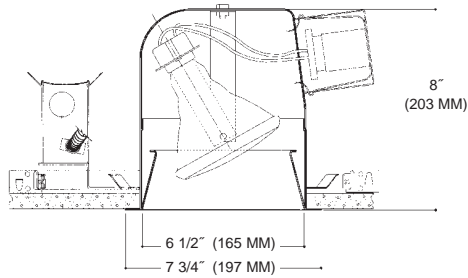
\*\* - specify slope degrees in 5° increments up to 45°

**Trim Options**

- PFL - Polish Flange
- TLP - Top Re-lamp Modifications
- FGSK - Flange Gasket
- GR - Goof Ring\*

\* - specify I.D. and O.D. standard white finish

## ADJUSTABLE OPEN REFLECTOR



Aperture: 6 1/2", Ceiling Cutout: 6 3/4", OD: 7 3/4"

### Housing

| Part #  | Description                         |
|---|-------------------------------------|
| V700  | 7" Par 30/38 150W Max. Incandescent |
| <b>Suitable Lamp Types:</b>                         |                                     |
| Par30/Par38   |                                     |
| <b>Lamp Adjustability:</b> 30° Tilt / 359° Rotation |                                     |

### Trim

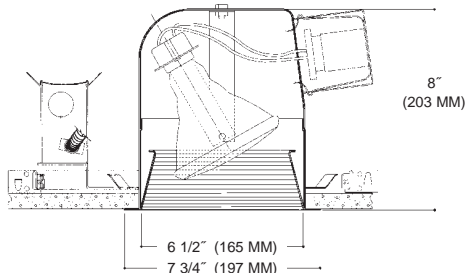
| Part #  | Description                         |
|---|-------------------------------------|
| V7ADJSPCL   | - Spec. Clear Alzak® Reflector Cone |
| V7ADJSPGO   | - Spec. Gold Alzak® Reflector Cone  |
| V7ADJWH   | - Matte White Reflector Cone        |
| <b>More Color Options Available See Page 6</b>            |                                     |
| <b>Factory Standard is a Low Iridescent Alzak® finish</b> |                                     |
| <i>Alzak® is a registered trademark of ALCOA</i>          |                                     |

### Accessories

|       |                                   |       |                    |
|-------|-----------------------------------|-------|--------------------|
| ST277 | - Step Down Transformer (277:115) | CB517 | - Caddy Bars (517) |
| FS    | - Fuse                            | CB520 | - Caddy Bars (520) |
| RM    | - Old Work Remodeler Housing      |       |                    |



## ADJUSTABLE OPEN BAFFLE REFLECTOR



Aperture: 6 1/2", Ceiling Cutout: 6 3/4", OD: 7 3/4"

### Housing

| Part #  | Description                         |
|---|-------------------------------------|
| V700  | 7" Par 30/38 150W Max. Incandescent |
| <b>Suitable Lamp Types:</b>                         |                                     |
| Par30/Par38   |                                     |
| <b>Lamp Adjustability:</b> 30° Tilt / 359° Rotation |                                     |

### Trim

| Part #  | Description                      |
|---|----------------------------------|
| <b>Multi-Groove Baffle</b>                                |                                  |
| V7ADJBB   | - Black Multi-Groove Baffle Cone |
| V7ADJWHB  | - White Multi-Groove Baffle Cone |
| <b>More Color Options Available See Page 6</b>            |                                  |
| <b>Factory Standard is a Low Iridescent Alzak® finish</b> |                                  |
| <i>Alzak® is a registered trademark of ALCOA</i>          |                                  |

### Accessories

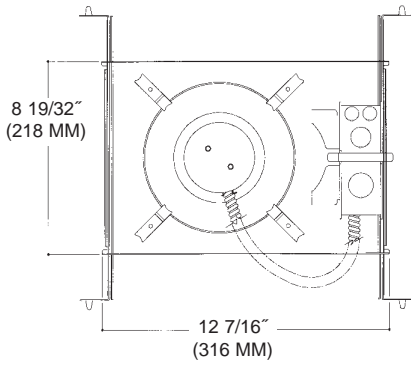
|       |                                   |       |                    |
|-------|-----------------------------------|-------|--------------------|
| ST277 | - Step Down Transformer (277:115) | CB517 | - Caddy Bars (517) |
| FS    | - Fuse                            | CB520 | - Caddy Bars (520) |
| RM    | - Old Work Remodeler Housing      |       |                    |



7"

Vertical Adjustable Incandescent (Par Lamp)

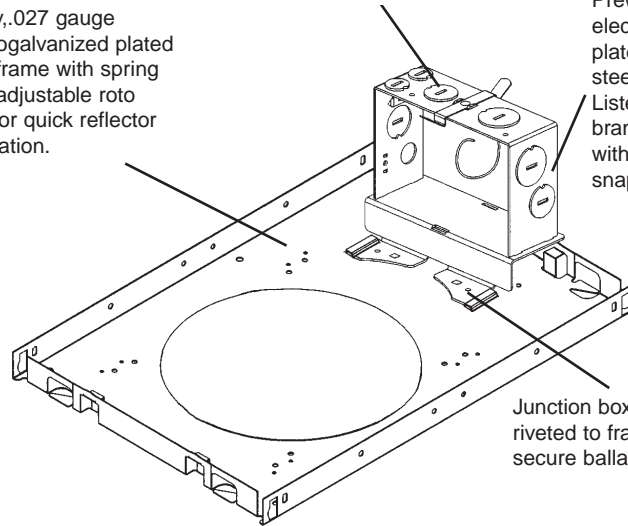
## 7" Vertical Adjustable Incandescent



Heavy .027 gauge electrogalvanized plated steel frame with spring steel adjustable roto clips for quick reflector installation.

Multiple 1/2" and 3/4" pryouts.

Prewired and grounded electrogalvanized plated heavy gauge steel junction box. Listed for through branch circuit wiring with two galvanized snap on covers



Junction box machine riveted to frame for secure ballast mounting

### Frame Options

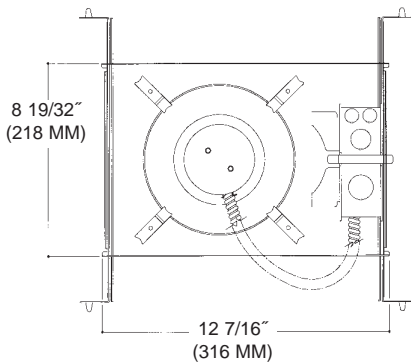
**CFM** - Custom Frame Modifications (*consult factory*)

### Trim Options

- PFL** - Polish Flange
- TLP** - Top Re-lamp Modifications
- FGSK** - Flange Gasket
- GR** - Goof Ring\*

\* - specify I.D. and O.D. standard white finish

## 7" Vertical Adjustable Incandescent



### Additional Product Info

#### Reflector

Single piece hand spun low iridescent Alzak® reflector with standard self trim flange and a white trim finish. 45° Lamp cutoff allows for a better visual cutoff than generally available. High polish flange, white and black trim finish's available consult factory.

#### Socket

Aluminum, heat dissipating socket cup vertically mounts to reflector by means of a firm locking adjustable husk clip. UL Listed, porcelain medium base socket.

#### Frame

Prewired electrogalvanized heavy steel junction box listed for through branch circuit wiring with 1/2" & 3/4" pryouts. Electrogalvanized plated steel housing with adjustable spring steel roto clips allowing for a quick trim installation.

Thermally protected 120V thermal cutout factory wired.

Housing accommodates any ceilings with a max. thickness of 1 3/4"

Same housing accommodates an open, lens, or wall wash reflector.

### Frame Options

**CFM** - Custom Frame Modifications (*consult factory*)

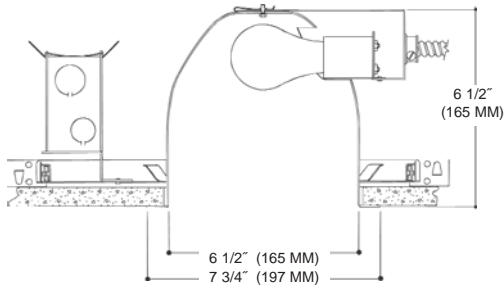
### Trim Options

- PFL** - Polish Flange
- TLP** - Top Re-lamp Modifications
- FGSK** - Flange Gasket
- GR** - Goof Ring\*

\* - specify I.D. and O.D. standard white finish



## OPEN REFLECTOR



Aperture: 6 1/2", Ceiling Cutout: 6 3/4", OD: 7 3/4"

### Housing

| Part #                      | Description               |
|-----------------------------|---------------------------|
| H700                        | 7" 150W Max. Incandescent |
| <b>Suitable Lamp Types:</b> |                           |
| A19/A21                     |                           |

### Trim

| Part #   | Description                                |
|----------|--|
| H710SPCL | - Specular Clear <i>Alzak</i> ® Reflector  |
| H710SPGO | - Specular Gold <i>Alzak</i> ® Reflector   |
| H710SPWT | - Specular Wheat <i>Alzak</i> ® Reflector  |
| H710SPPW | - Specular Pewter <i>Alzak</i> ® Reflector |
| H710SPUM | - Specular Umber <i>Alzak</i> ® Reflector  |
| H710SPBL | - Specular Black <i>Alzak</i> ® Reflector  |
| H710WH   | - Matte White Reflector                    |

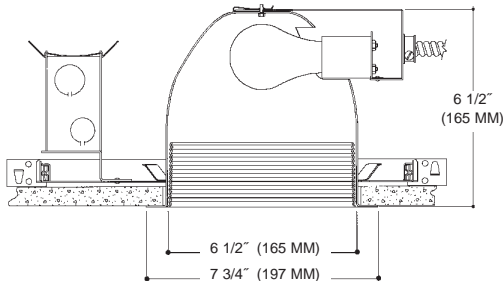
More Color Options Available See Page 6  
 Factory Standard is a Low Iridescent *Alzak*® finish  
*Alzak*® is a registered trademark of ALCOA

### Accessories

|       |                                   |       |                    |
|-------|-----------------------------------|-------|--------------------|
| ST277 | - Step Down Transformer (277:115) | CB517 | - Caddy Bars (517) |
| FS    | - Fuse                            | CB520 | - Caddy Bars (520) |
| RM    | - Old Work Remodeler Housing      |       |                    |



## OPEN BAFFLE REFLECTOR



Aperture: 6 1/2", Ceiling Cutout: 6 3/4", OD: 7 3/4"

### Housing

| Part #                      | Description               |
|-----------------------------|---------------------------|
| H700                        | 7" 150W Max. Incandescent |
| <b>Suitable Lamp Types:</b> |                           |
| A19/A21                     |                           |

### Trim

| Part #                           | Description                               |
|----------------------------------|---|
| <b>Black Multi-Groove Baffle</b> |   |
| H721SPCL                         | - Specular Clear <i>Alzak</i> ® Reflector |
| H721SPGO                         | - Specular Gold <i>Alzak</i> ® Reflector  |
| H721WH                           | - Matte White Reflector                   |
| <b>White Multi-Groove Baffle</b> |   |
| H722SPCL                         | - Specular Clear <i>Alzak</i> ® Reflector |
| H722SPGO                         | - Specular Gold <i>Alzak</i> ® Reflector  |
| H722WH                           | - Matte White Reflector                   |

More Color Options Available See Page 6  
 Factory Standard is a Low Iridescent *Alzak*® finish  
*Alzak*® is a registered trademark of ALCOA

### Accessories

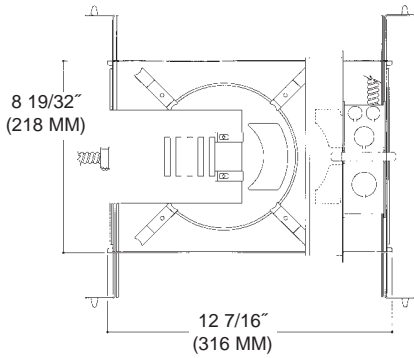
|       |                                   |       |                    |
|-------|-----------------------------------|-------|--------------------|
| ST277 | - Step Down Transformer (277:115) | CB517 | - Caddy Bars (517) |
| FS    | - Fuse                            | CB520 | - Caddy Bars (520) |
| RM    | - Old Work Remodeler Housing      |       |                    |



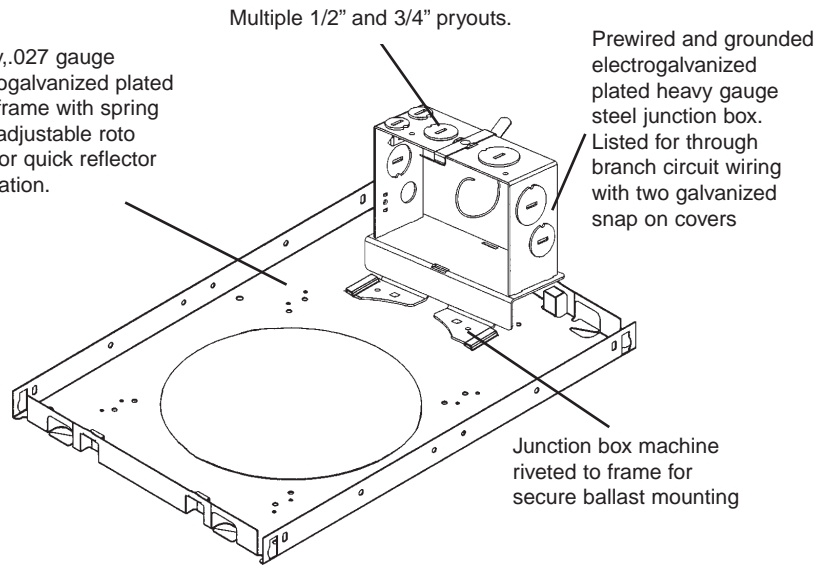
7"

Horizontal Incandescent (A-Lamp)

### 7" Horizontal Incandescent



Heavy .027 gauge electrogalvanized plated steel frame with spring steel adjustable roto clips for quick reflector installation.



Multiple 1/2" and 3/4" pryouts.

Prewired and grounded electrogalvanized plated heavy gauge steel junction box. Listed for through branch circuit wiring with two galvanized snap on covers

Junction box machine riveted to frame for secure ballast mounting

#### Frame Options

- CFM - Custom Frame Modifications (*consult factory*)
- SA\*\* - Slope Ceiling Adaptor (White Finish Standard)

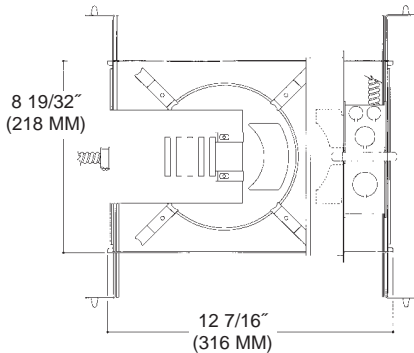
\*\* - specify slope degrees in 5° increments up to 45°

#### Trim Options

- PFL - Polish Flange
- TLP - Top Re-lamp Modifications
- FGSK - Flange Gasket
- GR - Goof Ring\*

\* - specify I.D. and O.D. standard white finish

### 7" Horizontal Incandescent



#### Additional Product Info

##### Reflector

Single piece hand spun low iridescent Alzak® reflector with standard self trim flange and a white trim finish. 45° Lamp cutoff allows for a better visual cutoff than generally available. High polish flange, white and black trim finish's available consult factory.

##### Socket

Aluminum, heat dissipating socket cup vertically mounts to reflector by means of a firm locking adjustable husk clip. UL Listed, porcelain medium base socket.

##### Frame

Prewired electrogalvanized heavy steel junction box listed for through branch circuit wiring with 1/2" & 3/4" pryouts. Electrogalvanized plated steel housing with adjustable spring steel roto clips allowing for a quick trim installation.

Thermally protected 120V thermal cutout factory wired.

Housing accommodates any ceilings with a max. thickness of 1 3/4"

Same housing accommodates an open, lens, or wall wash reflector.

#### Frame Options

- CFM - Custom Frame Modifications (*consult factory*)
- SA\*\* - Slope Ceiling Adaptor (White Finish Standard)

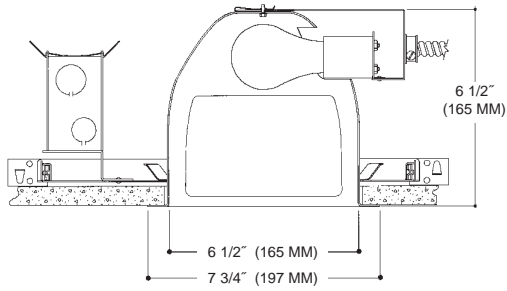
\*\* - specify slope degrees in 5° increments up to 45°

#### Trim Options

- PFL - Polish Flange
- TLP - Top Re-lamp Modifications
- FGSK - Flange Gasket
- GR - Goof Ring\*

\* - specify I.D. and O.D. standard white finish

## OPEN WALL WASH REFLECTOR



Aperture: 6 1/2", Ceiling Cutout: 6 3/4", OD: 7 3/4"

### Housing

| Part #                      | Description               |
|-----------------------------|---------------------------|
| H700                        | 7" 150W Max. Incandescent |
| <b>Suitable Lamp Types:</b> |                           |
| A19/A21                     |                           |

### Trim

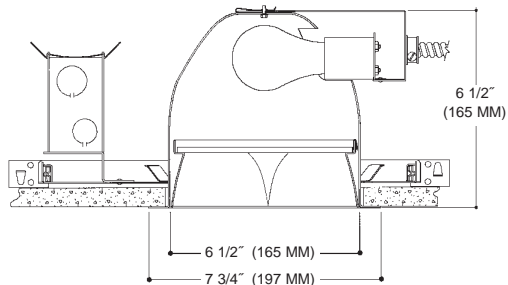
| Part #   | Description                       |
|--|-----------------------------------|
| <b>Single Wall Wash</b>                            |                                   |
| H780SPCL   | - Specular Clear Alzak® Reflector |
| H780SPGO   | - Specular Gold Alzak® Reflector  |
| H780WH   | - Matte White Reflector           |
| More Color Options Available See Page ____         |                                   |
| Factory Standard is a Low Iridescent Alzak® finish |                                   |
| Alzak® is a registered trademark of ALCOA          |                                   |

### Accessories

|       |                                   |       |                    |
|-------|-----------------------------------|-------|--------------------|
| ST277 | - Step Down Transformer (277:115) | CB517 | - Caddy Bars (517) |
| FS    | - Fuse                            | CB520 | - Caddy Bars (520) |
| RM    | - Old Work Remodeler Housing      |       |                    |



## PARABOLIC LOUVER REFLECTOR



Aperture: 6 1/2", Ceiling Cutout: 6 3/4", OD: 7 3/4"

### Housing

| Part #                      | Description               |
|-----------------------------|---------------------------|
| H700                        | 7" 150W Max. Incandescent |
| <b>Suitable Lamp Types:</b> |                           |
| A19/A21                     |                           |

### Trim

| Part #   | Description                        |
|--|------------------------------------|
| HXB710SPCL   | - Specular Clear Alzak® Reflector  |
| HXB710SPGO   | - Specular Gold Alzak® Reflector   |
| HXB710SPWT   | - Specular Wheat Alzak® Reflector  |
| HXB710SPPW   | - Specular Pewter Alzak® Reflector |
| HXB710SPUM   | - Specular Umber Alzak® Reflector  |
| HXB710SPBL   | - Specular Black Alzak® Reflector  |
| HXB710WH   | - Matte White Reflector            |
| More Color Options Available See Page ____         |                                    |
| Factory Standard is a Low Iridescent Alzak® finish |                                    |
| Alzak® is a registered trademark of ALCOA          |                                    |

### Accessories

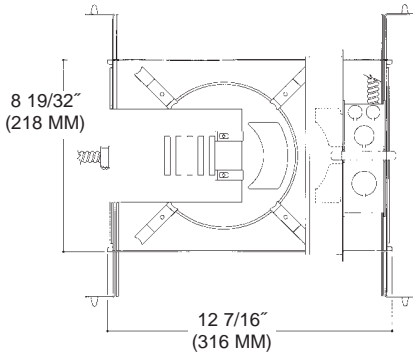
|       |                                   |       |                    |
|-------|-----------------------------------|-------|--------------------|
| ST277 | - Step Down Transformer (277:115) | CB517 | - Caddy Bars (517) |
| FS    | - Fuse                            | CB520 | - Caddy Bars (520) |
| RM    | - Old Work Remodeler Housing      |       |                    |



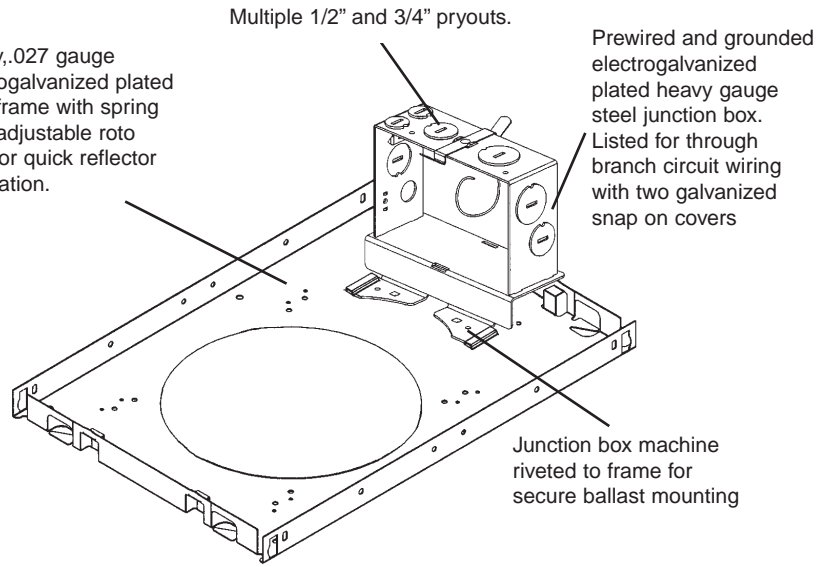
7"

Horizontal Incandescent (A-Lamp)

## 7" Horizontal Incandescent



Heavy .027 gauge electrogalvanized plated steel frame with spring steel adjustable roto clips for quick reflector installation.



### Frame Options

**CFM** - Custom Frame Modifications (*consult factory*)  
**SA\*\*** - Slope Ceiling Adaptor (White Finish Standard)

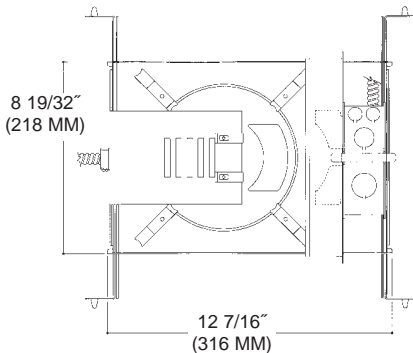
\*\* - specify slope degrees in 5° increments up to 45°

### Trim Options

**PFL** - Polish Flange  
**TLP** - Top Re-lamp Modifications  
**FGSK** - Flange Gasket  
**GR** - Goof Ring\*

\* - specify I.D. and O.D. standard white finish

## 7" Horizontal Incandescent



### Additional Product Info

#### Reflector

Single piece hand spun low iridescent Alzak® reflector with standard self trim flange and a white trim finish. 45° Lamp cutoff allows for a better visual cutoff than generally available.

High polish flange, white and black trim finish's available consult factory.

#### Socket

Aluminum, heat dissipating socket cup vertically mounts to reflector by means of a firm locking adjustable husk clip. UL Listed, porcelain medium base socket.

#### Frame

Prewired electrogalvanized heavy steel junction box listed for through branch circuit wiring with 1/2" & 3/4" pryouts. Electrogalvanized plated steel housing with adjustable spring steel roto clips allowing for a quick trim installation.

Thermally protected 120V thermal cutout factory wired.

Housing accommodates any ceilings with a max. thickness of 1 3/4"

Same housing accommodates an open, lens, or wall wash reflector.

### Frame Options

**CFM** - Custom Frame Modifications (*consult factory*)  
**SA\*\*** - Slope Ceiling Adaptor (White Finish Standard)

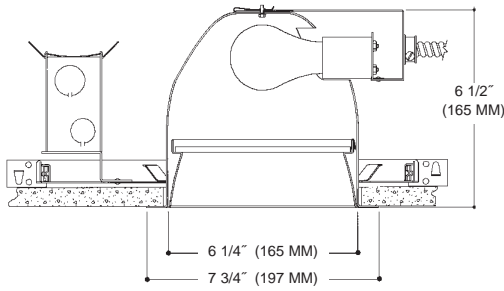
\*\* - specify slope degrees in 5° increments up to 45°

### Trim Options

**PFL** - Polish Flange  
**TLP** - Top Re-lamp Modifications  
**FGSK** - Flange Gasket  
**GR** - Goof Ring\*

\* - specify I.D. and O.D. standard white finish

## ENCLOSED LENS REFLECTOR



Aperture: 6 1/4", Ceiling Cutout: 6 3/4", OD: 7 3/4"

### Housing

| Part #                      | Description               |
|-----------------------------|---------------------------|
| H700                        | 7" 100W Max. Incandescent |
| <b>Suitable Lamp Types:</b> |                           |
| A19/A21                     |                           |

### Trim

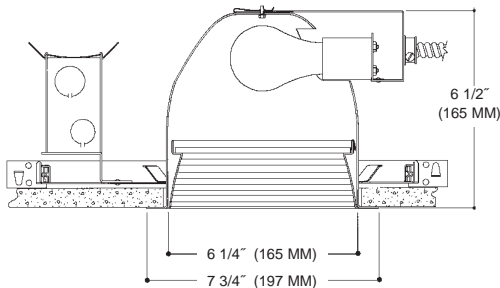
| Part #   | Description                               |
|--|---|
| <b>C73 Prismatic Lens</b>                                  |   |
| H730SPCL   | - Specular Clear <i>Alzak</i> ® Reflector |
| H730WH   | - Matte White Splay                       |
| <b>Fresnel Lens</b>  |   |
| H732SPCL   | - Specular Clear <i>Alzak</i> ® Reflector |
| H732WH   | - Matte White Splay                       |
| <b>Clear Lens</b>  |   |
| H732SPCL   | - Specular Clear <i>Alzak</i> ® Reflector |
| H732WH   | - Matte White Splay                       |
| More Color Options Available See Page 6                    |   |
| Factory Standard is a Low Iridescent <i>Alzak</i> ® finish |   |
| <i>Alzak</i> ® is a registered trademark of ALCOA          |   |

### Accessories

|       |                                   |       |                    |
|-------|-----------------------------------|-------|--------------------|
| ST277 | - Step Down Transformer (277:115) | CB517 | - Caddy Bars (517) |
| FS    | - Fuse                            | CB520 | - Caddy Bars (520) |
| RM    | - Old Work Remodeler Housing      |       |                    |



## ENCLOSED BAFFLED LENS REFLECTOR



Aperture: 6 1/4", Ceiling Cutout: 6 3/4", OD: 7 3/4"

### Housing

| Part #                      | Description               |
|-----------------------------|---------------------------|
| H700                        | 7" 100W Max. Incandescent |
| <b>Suitable Lamp Types:</b> |                           |
| A19/A21                     |                           |

### Trim

| Part #   | Description                       |
|--|-----------------------------------|
| <b>C73 Prismatic Lens</b>                                  |                                   |
| H760BL   | - Black Multi-Groove Baffle Splay |
| H760WH   | - White Multi-Groove Baffle Splay |
| <b>Fresnel Lens</b>  |                                   |
| H762BL   | - Black Multi-Groove Baffle Splay |
| H762WH   | - White Multi-Groove Baffle Splay |
| <b>Clear Lens</b>  |                                   |
| H766BL   | - Black Multi-Groove Baffle Splay |
| H766WH   | - White Multi-Groove Baffle Splay |
| More Color Options Available See Page 6                    |                                   |
| Factory Standard is a Low Iridescent <i>Alzak</i> ® finish |                                   |
| <i>Alzak</i> ® is a registered trademark of ALCOA          |                                   |

### Accessories

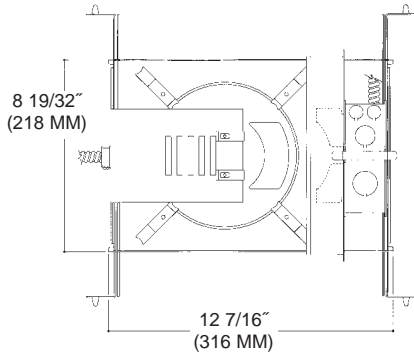
|       |                                   |       |                    |
|-------|-----------------------------------|-------|--------------------|
| ST277 | - Step Down Transformer (277:115) | CB517 | - Caddy Bars (517) |
| FS    | - Fuse                            | CB520 | - Caddy Bars (520) |
| RM    | - Old Work Remodeler Housing      |       |                    |



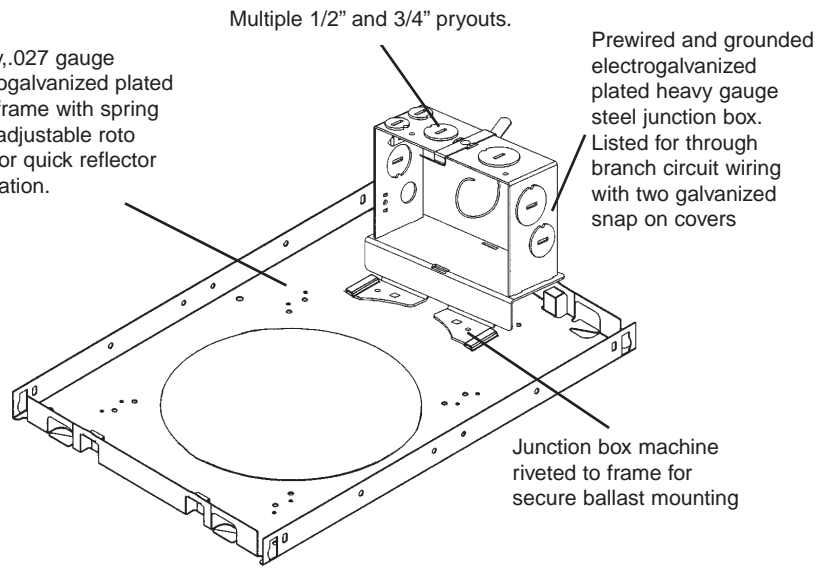
7"

Horizontal Incandescent (A-Lamp)

### 7" Horizontal Incandescent



Heavy, .027 gauge electrogalvanized plated steel frame with spring steel adjustable roto clips for quick reflector installation.



#### Frame Options

- CFM** - Custom Frame Modifications (*consult factory*)
- SA\*\*** - Slope Ceiling Adaptor (White Finish Standard)

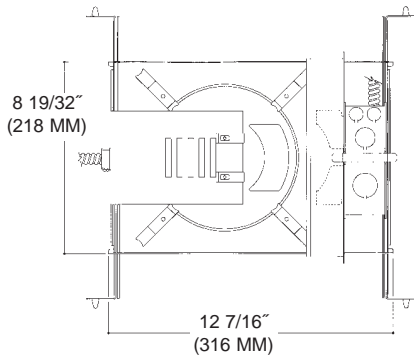
\*\* - specify slope degrees in 5° increments up to 45°

#### Trim Options

- PFL** - Polish Flange
- TLP** - Top Re-lamp Modifications
- FGSK** - Flange Gasket
- GR** - Goof Ring\*

\* - specify I.D. and O.D. standard white finish

### 7" Horizontal Incandescent



#### Additional Product Info

##### Reflector

Single piece hand spun low iridescent Alzak® reflector with standard self trim flange and a white trim finish. 45° Lamp cutoff allows for a better visual cutoff than generally available. High polish flange, white and black trim finish's available consult factory.

##### Socket

Aluminum, heat dissipating socket cup vertically mounts to reflector by means of a firm locking adjustable husk clip. UL Listed, porcelain medium base socket.

##### Frame

Prewired electrogalvanized heavy steel junction box listed for through branch circuit wiring with 1/2" & 3/4" pryouts. Electrogalvanized plated steel housing with adjustable spring steel roto clips allowing for a quick trim installation.

Thermally protected 120V thermal cutout factory wired.  
Housing accommodates any ceilings with a max. thickness of 1 3/4"  
Same housing accommodates an open, lens, or wall wash reflector.

#### Frame Options

- CFM** - Custom Frame Modifications (*consult factory*)
- SA\*\*** - Slope Ceiling Adaptor (White Finish Standard)

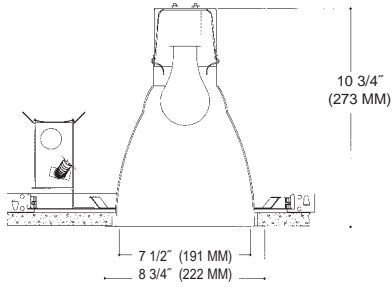
\*\* - specify slope degrees in 5° increments up to 45°

#### Trim Options

- PFL** - Polish Flange
- TLP** - Top Re-lamp Modifications
- FGSK** - Flange Gasket
- GR** - Goof Ring\*

\* - specify I.D. and O.D. standard white finish

## OPEN REFLECTOR



Aperture: 7 1/2", Ceiling Cutout: 7 3/4", OD: 8 3/4"

### Housing

| Part # | Description               |
|--------|---------------------------|
| V800   | 8" 200W Max. Incandescent |

#### Suitable Lamp Types:

A19/A21/A23/PS25/PS30, BR40  
Par16/Par20/Par30/Par38

### Trim

| Part #   | Description                                |
|----------|--|
| V810SPCL | - Specular Clear <i>Alzak</i> ® Reflector  |
| V810SPGO | - Specular Gold <i>Alzak</i> ® Reflector   |
| V810SPWT | - Specular Wheat <i>Alzak</i> ® Reflector  |
| V810SPPW | - Specular Pewter <i>Alzak</i> ® Reflector |
| V810SPUM | - Specular Umber <i>Alzak</i> ® Reflector  |
| V810SPBL | - Specular Black <i>Alzak</i> ® Reflector  |
| V810WH   | - Matte White Reflector                    |

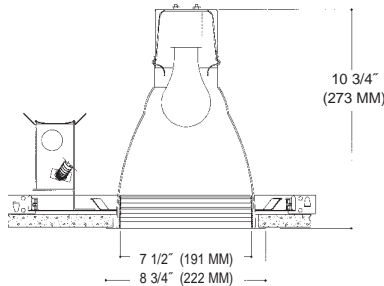
More Color Options Available See Page 6  
Factory Standard is a Low Iridescent *Alzak*® finish  
*Alzak*® is a registered trademark of ALCOA

### Accessories

|       |                                   |       |                    |
|-------|-----------------------------------|-------|--------------------|
| ST277 | - Step Down Transformer (277:115) | CB517 | - Caddy Bars (517) |
| FS    | - Fuse                            | CB520 | - Caddy Bars (520) |
| RM    | - Old Work Remodeler Housing      |       |                    |



## OPEN BAFFLE REFLECTOR



Aperture: 7 1/2", Ceiling Cutout: 7 3/4", OD: 8 3/4"

### Housing

| Part # | Description               |
|--------|---------------------------|
| V800   | 8" 200W Max. Incandescent |

#### Suitable Lamp Types:

A19/A21/A23/PS25/PS30, BR40  
Par16/Par20/Par30/Par38

### Trim

| Part #                           | Description                               |
|----------------------------------|---|
| <b>Black Multi-Groove Baffle</b> |   |
| V821SPCL                         | - Specular Clear <i>Alzak</i> ® Reflector |
| V821SPGO                         | - Specular Gold <i>Alzak</i> ® Reflector  |
| V821WH                           | - Matte White Reflector                   |
| <b>White Multi-Groove Baffle</b> |   |
| V822SPCL                         | - Specular Clear <i>Alzak</i> ® Reflector |
| V822SPGO                         | - Specular Gold <i>Alzak</i> ® Reflector  |
| V822WH                           | - Matte White Reflector                   |

More Color Options Available See Page 6  
Factory Standard is a Low Iridescent *Alzak*® finish  
*Alzak*® is a registered trademark of ALCOA

### Accessories

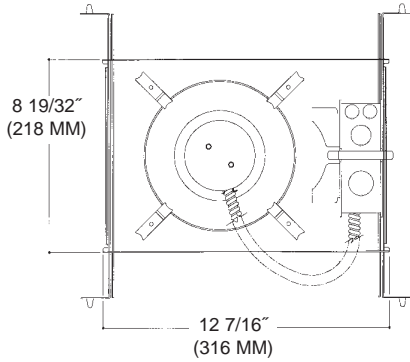
|       |                                   |       |                    |
|-------|-----------------------------------|-------|--------------------|
| ST277 | - Step Down Transformer (277:115) | CB517 | - Caddy Bars (517) |
| FS    | - Fuse                            | CB520 | - Caddy Bars (520) |
| RM    | - Old Work Remodeler Housing      |       |                    |



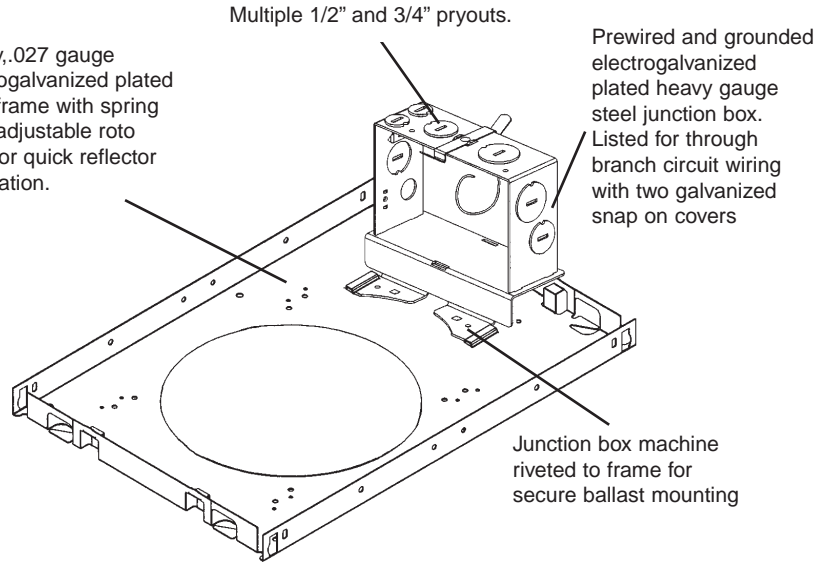
8"

Vertical Incandescent (Par / A-Lamp)

### 8" Vertical Incandescent



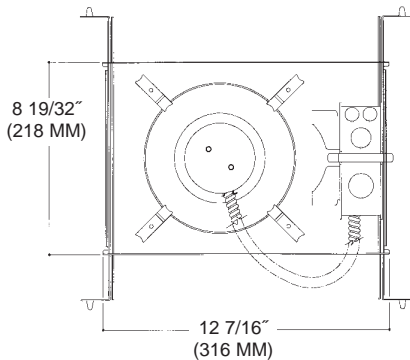
Heavy .027 gauge electrogalvanized plated steel frame with spring steel adjustable roto clips for quick reflector installation.



| Frame Options  |
|--|
| <p><b>CFM</b> - Custom Frame Modifications (<i>consult factory</i>)</p> <p><b>SA**</b> - Slope Ceiling Adaptor (White Finish Standard)</p> |
| <p>** - specify slope degrees in 5° increments up to 45°</p>   |

| Trim Options   |
|--|
| <p><b>PFL</b> - Polish Flange</p> <p><b>TLP</b> - Top Re-lamp Modifications</p> <p><b>FGSK</b> - Flange Gasket</p> <p><b>GR</b> - Goof Ring*</p> |
| <p>* - specify I.D. and O.D. standard white finish</p>   |

### 8" Vertical Incandescent



#### Additional Product Info

##### Reflector

Single piece hand spun low iridescent Alzak® reflector with standard self trim flange and a white trim finish. 45° Lamp cutoff allows for a better visual cutoff than generally available. High polish flange, white and black trim finish's available consult factory.

##### Socket

Aluminum, heat disipating socket cup vertically mounts to reflector by means of a firm locking adjustable husk clip. UL Listed, porcelain medium base socket.

##### Frame

Prewired electrogalvanized heavy steel junction box listed for through branch circuit wiring with 1/2" & 3/4" pryouts. Electrogalvanized plated steel housing with adjustable spring steel roto clips allowing for a quick trim installation.

Thermally protected 120V thermal cutout factory wired.

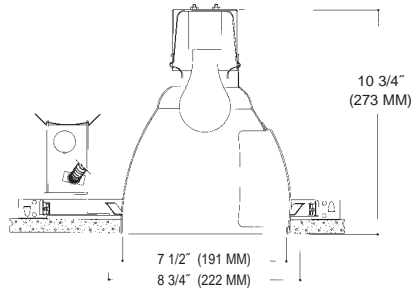
Housing accomodates any ceilings with a max. thickness of 1 3/4"

Same housing accomodates an open, lens, or wall wash reflector.

| Frame Options  |
|--|
| <p><b>CFM</b> - Custom Frame Modifications (<i>consult factory</i>)</p> <p><b>SA**</b> - Slope Ceiling Adaptor (White Finish Standard)</p> |
| <p>** - specify slope degrees in 5° increments up to 45°</p>   |

| Trim Options   |
|--|
| <p><b>PFL</b> - Polish Flange</p> <p><b>TLP</b> - Top Re-lamp Modifications</p> <p><b>FGSK</b> - Flange Gasket</p> <p><b>GR</b> - Goof Ring*</p> |
| <p>* - specify I.D. and O.D. standard white finish</p>   |

## OPEN WALL WASH REFLECTOR



Aperture: 7 1/2", Ceiling Cutout: 7 3/4", OD: 8 3/4"

### Housing

| Part #                      | Description               |
|-----------------------------|---------------------------|
| V800                        | 8" 200W Max. Incandescent |
| <b>Suitable Lamp Types:</b> |                           |
| A19/A21/A23/PS25/PS30, BR40 |                           |
| Par16/Par20/Par30/Par38     |                           |

### Trim

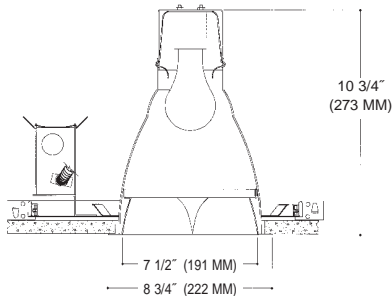
| Part #   | Description                               |
|--|---|
| <b>Single Wall Wash</b>                                    |   |
| V880SPCL   | - Specular Clear <i>Alzak</i> ® Reflector |
| V880SPGO   | - Specular Gold <i>Alzak</i> ® Reflector  |
| V880WH   | - Matte White Reflector                   |
| More Color Options Available See Page 6                    |   |
| Factory Standard is a Low Iridescent <i>Alzak</i> ® finish |   |
| <i>Alzak</i> ® is a registered trademark of ALCOA          |   |

### Accessories

|       |                                   |       |                    |
|-------|-----------------------------------|-------|--------------------|
| ST277 | - Step Down Transformer (277:115) | CB517 | - Caddy Bars (517) |
| FS    | - Fuse                            | CB520 | - Caddy Bars (520) |
| RM    | - Old Work Remodeler Housing      |       |                    |



## PARABOLIC LOUVER REFLECTOR



Aperture: 7 1/2", Ceiling Cutout: 7 3/4", OD: 8 3/4"

### Housing

| Part #                      | Description               |
|-----------------------------|---------------------------|
| V800                        | 8" 200W Max. Incandescent |
| <b>Suitable Lamp Types:</b> |                           |
| A19/A21/A23/PS25/PS30, BR40 |                           |
| Par16/Par20/Par30/Par38     |                           |

### Trim

| Part #   | Description                                |
|--|--|
| VXB810SPCL   | - Specular Clear <i>Alzak</i> ® Reflector  |
| VXB810SPGO   | - Specular Gold <i>Alzak</i> ® Reflector   |
| VXB810SPWT   | - Specular Wheat <i>Alzak</i> ® Reflector  |
| VXB810SPPW   | - Specular Pewter <i>Alzak</i> ® Reflector |
| VXB810SPUM   | - Specular Umber <i>Alzak</i> ® Reflector  |
| VXB810SPBL   | - Specular Black <i>Alzak</i> ® Reflector  |
| VXB810WH   | - Matte White Reflector                    |
| More Color Options Available See Page 6                    |  |
| Factory Standard is a Low Iridescent <i>Alzak</i> ® finish |  |
| <i>Alzak</i> ® is a registered trademark of ALCOA          |  |

### Accessories

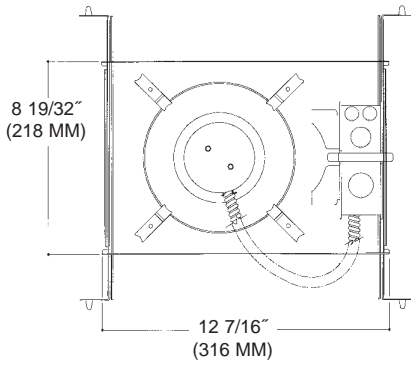
|       |                                   |       |                    |
|-------|-----------------------------------|-------|--------------------|
| ST277 | - Step Down Transformer (277:115) | CB517 | - Caddy Bars (517) |
| FS    | - Fuse                            | CB520 | - Caddy Bars (520) |
| RM    | - Old Work Remodeler Housing      |       |                    |



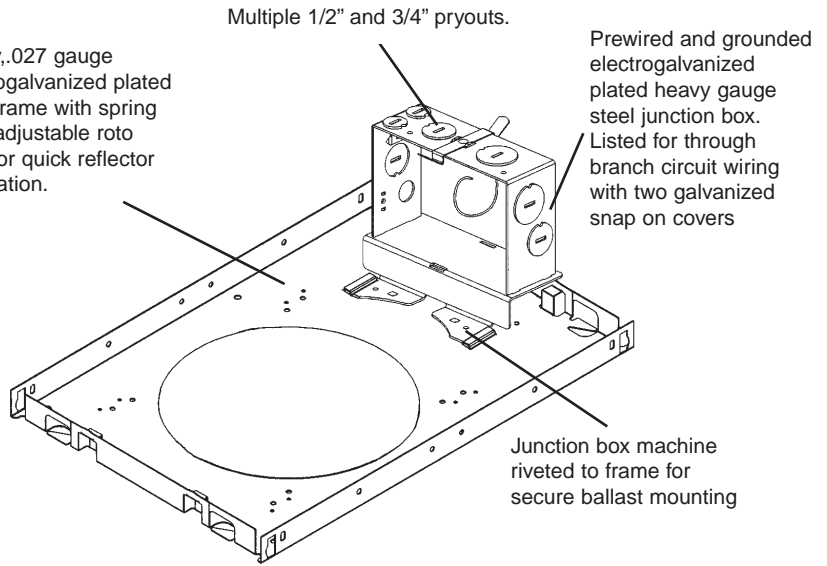
8"

Vertical Incandescent (Par / A-Lamp)

### 8" Vertical Incandescent



Heavy .027 gauge electrogalvanized plated steel frame with spring steel adjustable roto clips for quick reflector installation.



Multiple 1/2" and 3/4" pryouts.

Prewired and grounded electrogalvanized plated heavy gauge steel junction box. Listed for through branch circuit wiring with two galvanized snap on covers

Junction box machine riveted to frame for secure ballast mounting

#### Frame Options

- CFM** - Custom Frame Modifications (*consult factory*)
- SA\*\*** - Slope Ceiling Adaptor (White Finish Standard)

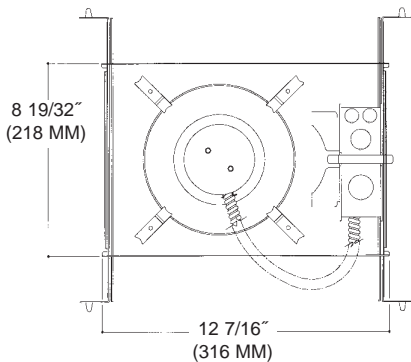
\*\* - specify slope degrees in 5° increments up to 45°

#### Trim Options

- PFL** - Polish Flange
- TLP** - Top Re-lamp Modifications
- FGSK** - Flange Gasket
- GR** - Goof Ring\*

\* - specify I.D. and O.D. standard white finish

### 8" Vertical Incandescent



#### Additional Product Info

##### Reflector

Single piece hand spun low iridescent Alzak® reflector with standard self trim flange and a white trim finish. 45° Lamp cutoff allows for a better visual cutoff than generally available.

High polish flange, white and black trim finish's available consult factory.

##### Socket

Aluminum, heat dissipating socket cup vertically mounts to reflector by means of a firm locking adjustable husk clip. UL Listed, porcelain medium base socket.

##### Frame

Prewired electrogalvanized heavy steel junction box listed for through branch circuit wiring with 1/2" & 3/4" pryouts. Electrogalvanized plated steel housing with adjustable spring steel roto clips allowing for a quick trim installation.

Thermally protected 120V thermal cutout factory wired.

Housing accommodates any ceilings with a max. thickness of 1 3/4"

Same housing accommodates an open, lens, or wall wash reflector.

#### Frame Options

- CFM** - Custom Frame Modifications (*consult factory*)
- SA\*\*** - Slope Ceiling Adaptor (White Finish Standard)

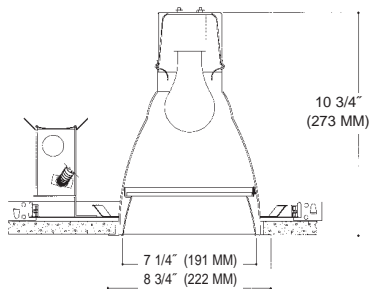
\*\* - specify slope degrees in 5° increments up to 45°

#### Trim Options

- PFL** - Polish Flange
- TLP** - Top Re-lamp Modifications
- FGSK** - Flange Gasket
- GR** - Goof Ring\*

\* - specify I.D. and O.D. standard white finish

## ENCLOSED LENS REFLECTOR



Aperture: 7 1/4", Ceiling Cutout: 7 3/4", OD: 8 3/4"

### Housing

| Part #                      | Description               |
|-----------------------------|---------------------------|
| V800                        | 8" 150W Max. Incandescent |
| <b>Suitable Lamp Types:</b> |                           |
| A19/A21/A23/PS25, BR40      |                           |

### Trim

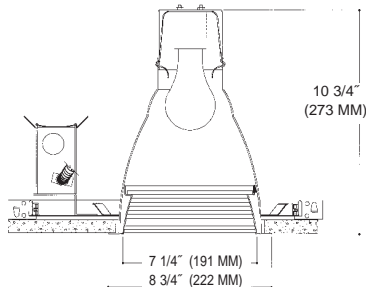
| Part #   | Description                               |
|--|---|
| <b>C73 Prismatic Lens</b>                                  |   |
| V830SPCL   | - Specular Clear <i>Alzak</i> ® Reflector |
| V830WH   | - Matte White Splay                       |
| <b>Fresnel Lens</b>  |   |
| V832SPCL   | - Specular Clear <i>Alzak</i> ® Reflector |
| V832WH   | - Matte White Splay                       |
| <b>Clear Lens</b>  |   |
| V832SPCL   | - Specular Clear <i>Alzak</i> ® Reflector |
| V832WH   | - Matte White Splay                       |
| More Color Options Available See Page 6                    |   |
| Factory Standard is a Low Iridescent <i>Alzak</i> ® finish |   |
| <i>Alzak</i> ® is a registered trademark of ALCOA          |   |

### Accessories

|       |                                   |       |                    |
|-------|-----------------------------------|-------|--------------------|
| ST277 | - Step Down Transformer (277:115) | CB517 | - Caddy Bars (517) |
| FS    | - Fuse                            | CB520 | - Caddy Bars (520) |
| RM    | - Old Work Remodeler Housing      |       |                    |



## ENCLOSED BAFFLED LENS REFLECTOR



Aperture: 7 1/4", Ceiling Cutout: 7 3/4", OD: 8 3/4"

### Housing

| Part #                      | Description               |
|-----------------------------|---------------------------|
| V800                        | 8" 150W Max. Incandescent |
| <b>Suitable Lamp Types:</b> |                           |
| A19/A21/A23/PS25, BR40      |                           |

### Trim

| Part #   | Description                       |
|--|-----------------------------------|
| <b>C73 Prismatic Lens</b>                                  |                                   |
| V860BL   | - Black Multi-Groove Baffle Splay |
| V860WH   | - White Multi-Groove Baffle Splay |
| <b>Fresnel Lens</b>  |                                   |
| V862BL   | - Black Multi-Groove Baffle Splay |
| V862WH   | - White Multi-Groove Baffle Splay |
| <b>Clear Lens</b>  |                                   |
| V866BL   | - Black Multi-Groove Baffle Splay |
| V866WH   | - White Multi-Groove Baffle Splay |
| More Color Options Available See Page 6                    |                                   |
| Factory Standard is a Low Iridescent <i>Alzak</i> ® finish |                                   |
| <i>Alzak</i> ® is a registered trademark of ALCOA          |                                   |

### Accessories

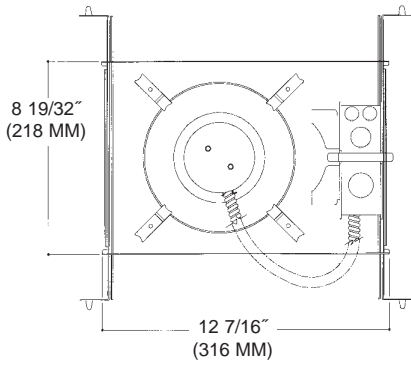
|       |                                   |       |                    |
|-------|-----------------------------------|-------|--------------------|
| ST277 | - Step Down Transformer (277:115) | CB517 | - Caddy Bars (517) |
| FS    | - Fuse                            | CB520 | - Caddy Bars (520) |
| RM    | - Old Work Remodeler Housing      |       |                    |



8"

Vertical Incandescent (Par / A-Lamp)

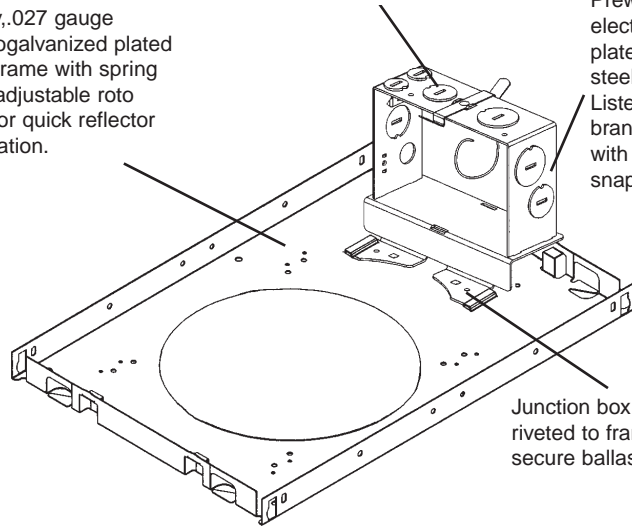
### 8" Vertical Incandescent



Heavy .027 gauge electrogalvanized plated steel frame with spring steel adjustable roto clips for quick reflector installation.

Multiple 1/2" and 3/4" pryouts.

Prewired and grounded electrogalvanized plated heavy gauge steel junction box. Listed for through branch circuit wiring with two galvanized snap on covers



Junction box machine riveted to frame for secure ballast mounting

#### Frame Options

- CFM** - Custom Frame Modifications (*consult factory*)
- SA\*\*** - Slope Ceiling Adaptor (White Finish Standard)

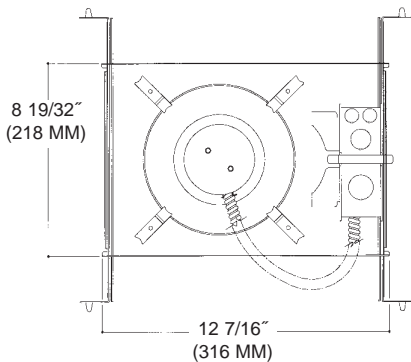
\*\* - specify slope degrees in 5° increments up to 45°

#### Trim Options

- PFL** - Polish Flange
- TLP** - Top Re-lamp Modifications
- FGSK** - Flange Gasket
- GR** - Goof Ring\*

\* - specify I.D. and O.D. standard white finish

### 8" Vertical Incandescent



#### Additional Product Info

##### Reflector

Single piece hand spun low iridescent Alzak® reflector with standard self trim flange and a white trim finish. 45° Lamp cutoff allows for a better visual cutoff than generally available. High polish flange, white and black trim finish's available consult factory.

##### Socket

Aluminum, heat dissipating socket cup vertically mounts to reflector by means of a firm locking adjustable husk clip. UL Listed, porcelain medium base socket.

##### Frame

Prewired electrogalvanized heavy steel junction box listed for through branch circuit wiring with 1/2" & 3/4" pryouts. Electrogalvanized plated steel housing with adjustable spring steel roto clips allowing for a quick trim installation.

Thermally protected 120V thermal cutout factory wired.

Housing accommodates any ceilings with a max. thickness of 1 3/4"

Same housing accommodates an open, lens, or wall wash reflector.

#### Frame Options

- CFM** - Custom Frame Modifications (*consult factory*)
- SA\*\*** - Slope Ceiling Adaptor (White Finish Standard)

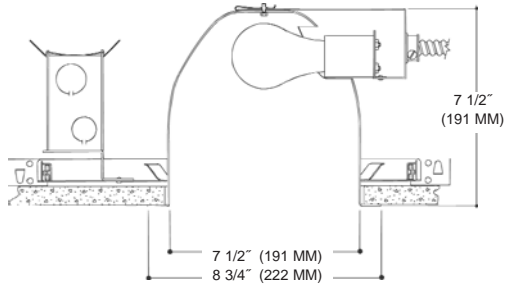
\*\* - specify slope degrees in 5° increments up to 45°

#### Trim Options

- PFL** - Polish Flange
- TLP** - Top Re-lamp Modifications
- FGSK** - Flange Gasket
- GR** - Goof Ring\*

\* - specify I.D. and O.D. standard white finish

## OPEN REFLECTOR



Aperture: 7 1/2", Ceiling Cutout: 7 3/4", OD: 8 3/4"

### Housing

| Part #                       | Description               |
|------------------------------|---------------------------|
| <b>H800</b>                  | 8" 200W Max. Incandescent |
| <b>Suitable Lamp Types:</b>  |                           |
| <b>A19/A21/A23/PS25/PS30</b> |                           |

### Trim

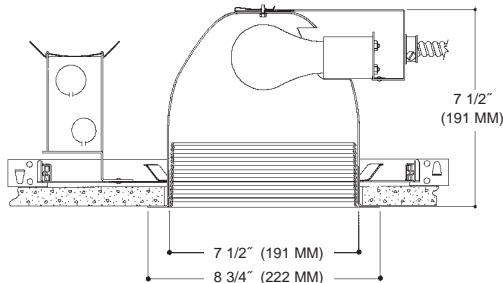
| Part #   | Description                                |
|--|--|
| <b>H810SPCL</b>  | - Specular Clear <i>Alzak</i> ® Reflector  |
| <b>H810SPGO</b>  | - Specular Gold <i>Alzak</i> ® Reflector   |
| <b>H810SPWT</b>  | - Specular Wheat <i>Alzak</i> ® Reflector  |
| <b>H810SPPW</b>  | - Specular Pewter <i>Alzak</i> ® Reflector |
| <b>H810SPUM</b>  | - Specular Umber <i>Alzak</i> ® Reflector  |
| <b>H810SPBL</b>  | - Specular Black <i>Alzak</i> ® Reflector  |
| <b>H810WH</b>  | - Matte White Reflector                    |
| <b>More Color Options Available See Page 6</b>                   |  |
| <b>Factory Standard is a Low Iridescent <i>Alzak</i>® finish</b> |  |
| <b><i>Alzak</i>® is a registered trademark of ALCOA</b>          |  |

### Accessories

|              |                                   |              |                    |
|--------------|-----------------------------------|--------------|--------------------|
| <b>ST277</b> | - Step Down Transformer (277:115) | <b>CB517</b> | - Caddy Bars (517) |
| <b>FS</b>    | - Fuse                            | <b>CB520</b> | - Caddy Bars (520) |
| <b>RM</b>    | - Old Work Remodeler Housing      |              |                    |



## OPEN BAFFLE REFLECTOR



Aperture: 7 1/2", Ceiling Cutout: 7 3/4", OD: 8 3/4"

### Housing

| Part #                       | Description               |
|------------------------------|---------------------------|
| <b>H800</b>                  | 8" 200W Max. Incandescent |
| <b>Suitable Lamp Types:</b>  |                           |
| <b>A19/A21/A23/PS25/PS30</b> |                           |

### Trim

| Part #   | Description                               |
|--|---|
| <b>Black Multi-Groove Baffle</b>                                 |   |
| <b>H821SPCL</b>  | - Specular Clear <i>Alzak</i> ® Reflector |
| <b>H821SPGO</b>  | - Specular Gold <i>Alzak</i> ® Reflector  |
| <b>H821WH</b>  | - Matte White Reflector                   |
| <b>White Multi-Groove Baffle</b>                                 |   |
| <b>H822SPCL</b>  | - Specular Clear <i>Alzak</i> ® Reflector |
| <b>H822SPGO</b>  | - Specular Gold <i>Alzak</i> ® Reflector  |
| <b>H822WH</b>  | - Matte White Reflector                   |
| <b>More Color Options Available See Page 6</b>                   |   |
| <b>Factory Standard is a Low Iridescent <i>Alzak</i>® finish</b> |   |
| <b><i>Alzak</i>® is a registered trademark of ALCOA</b>          |   |

### Accessories

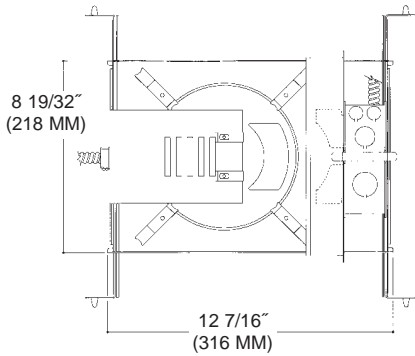
|              |                                   |              |                    |
|--------------|-----------------------------------|--------------|--------------------|
| <b>ST277</b> | - Step Down Transformer (277:115) | <b>CB517</b> | - Caddy Bars (517) |
| <b>FS</b>    | - Fuse                            | <b>CB520</b> | - Caddy Bars (520) |
| <b>RM</b>    | - Old Work Remodeler Housing      |              |                    |



8"

Horizontal Incandescent (A-Lamp)

### 8" Horizontal Incandescent

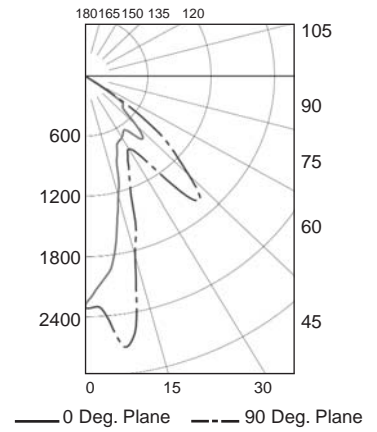


**Frame  
V800**

**Reflector  
H810SPCL**

**LTL Test # 11295**

**Efficiency: 81.7%**  
**Total Lumens: 3920**  
**Lamp Source: 1x200W**  
**GE 200A21/IF A21**



**Cone of Light**

| Ft below | FC nadir | Dia @ 50% |
|----------|----------|-----------|
| 6.0      | 23.5     | 8.6       |
| 8.0      | 13.2     | 11.5      |
| 10.0     | 8.4      | 14.4      |
| 12.0     | 5.9      | 17.2      |
| 14.0     | 4.3      | 20.1      |
| 16.0     | 3.3      | 23.0      |

**Coefficients of Utilization**

| RC | 80 |    |    | 70 |    |    | 50 |    |    | 30 |    |    | 10 |    |    | 0  |    |    |    |    |
|----|----|----|----|----|----|----|----|----|----|----|----|----|----|----|----|----|----|----|----|----|
| RW | 70 | 50 | 30 | 10 | 70 | 50 | 30 | 10 | 50 | 30 | 10 | 50 | 30 | 10 | 50 | 30 | 10 | 50 | 30 | 10 |
| 0  | 97 | 97 | 97 | 97 | 95 | 95 | 95 | 95 | 91 | 91 | 91 | 87 | 87 | 87 | 83 | 83 | 83 | 82 |    |    |
| 1  | 92 | 89 | 87 | 8a | 90 | 88 | 86 | 84 | 84 | 83 | 81 | 81 | 80 | 79 | 78 | 77 | 76 | 75 |    |    |
| 2  | 87 | 82 | 79 | 75 | 85 | 81 | 77 | 75 | 78 | 75 | 73 | 76 | 73 | 71 | 73 | 72 | 70 | 68 |    |    |
| 3  | 81 | 75 | 71 | 67 | 80 | 74 | 70 | 66 | 72 | 68 | 65 | 70 | 67 | 64 | 68 | 66 | 63 | 62 |    |    |
| 4  | 76 | 69 | 64 | 60 | 75 | 68 | 63 | 60 | 66 | 62 | 59 | 65 | 61 | 58 | 63 | 60 | 58 | 56 |    |    |
| 5  | 71 | 63 | 58 | 54 | 70 | 63 | 57 | 54 | 61 | 57 | 53 | 60 | 56 | 53 | 58 | 55 | 52 | 51 |    |    |
| 6  | 67 | 58 | 52 | 48 | 65 | 57 | 52 | 48 | 56 | 51 | 48 | 55 | 50 | 47 | 54 | 50 | 47 | 45 |    |    |
| 7  | 62 | 53 | 47 | 43 | 60 | 52 | 46 | 42 | 51 | 46 | 42 | 50 | 45 | 42 | 49 | 45 | 42 | 40 |    |    |
| 8  | 57 | 48 | 42 | 38 | 56 | 47 | 42 | 38 | 46 | 41 | 38 | 45 | 41 | 37 | 45 | 40 | 37 | 36 |    |    |
| 9  | 53 | 44 | 38 | 34 | 52 | 43 | 38 | 34 | 42 | 37 | 34 | 41 | 37 | 33 | 41 | 36 | 33 | 32 |    |    |
| 10 | 49 | 40 | 34 | 30 | 48 | 39 | 34 | 30 | 39 | 33 | 30 | 38 | 33 | 30 | 37 | 33 | 30 | 28 |    |    |

**Frame Options**

- CFM** - Custom Frame Modifications (*consult factory*)
- SA\*\*** - Slope Ceiling Adaptor (White Finish Standard)

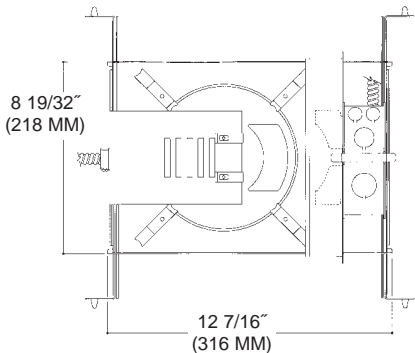
\*\* - specify slope degrees in 5° increments up to 45°

**Trim Options**

- PFL** - Polish Flange
- TLP** - Top Re-lamp Modifications
- FGSK** - Flange Gasket
- GR** - Goof Ring\*

\* - specify I.D. and O.D. standard white finish

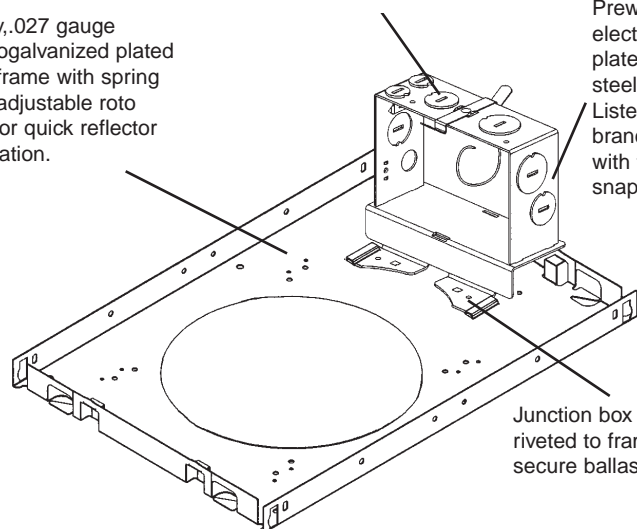
### 8" Horizontal Incandescent



Heavy .027 gauge electrogalvanized plated steel frame with spring steel adjustable roto clips for quick reflector installation.

Multiple 1/2" and 3/4" pryouts.

Prewired and grounded electrogalvanized plated heavy gauge steel junction box. Listed for through branch circuit wiring with two galvanized snap on covers



Junction box machine riveted to frame for secure ballast mounting

**Frame Options**

- CFM** - Custom Frame Modifications (*consult factory*)
- SA\*\*** - Slope Ceiling Adaptor (White Finish Standard)

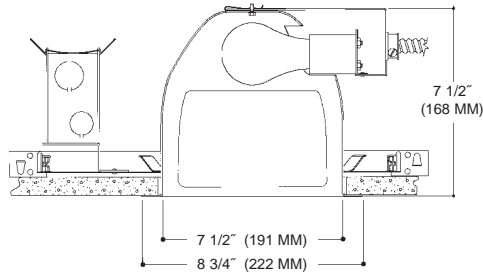
\*\* - specify slope degrees in 5° increments up to 45°

**Trim Options**

- PFL** - Polish Flange
- TLP** - Top Re-lamp Modifications
- FGSK** - Flange Gasket
- GR** - Goof Ring\*

\* - specify I.D. and O.D. standard white finish

## OPEN WALL WASH REFLECTOR



Aperture: 7 1/2", Ceiling Cutout: 7 3/4", OD: 8 3/4"

### Housing

| Part #                       | Description               |
|------------------------------|---------------------------|
| <b>H800</b>                  | 8" 200W Max. Incandescent |
| <b>Suitable Lamp Types:</b>  |                           |
| <b>A19/A21/A23/PS25/PS30</b> |                           |

### Trim

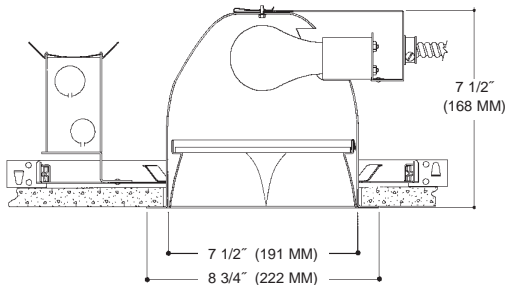
| Part #  | Description                     |
|---|---------------------------------|
| <b>Single Wall Wash</b>                                   |                                 |
| <b>H881SPCL</b>   | Specular Clear Alzak® Reflector |
| <b>H881SPGO</b>   | Specular Gold Alzak® Reflector  |
| <b>H881WH</b>   | Matte White Reflector           |
| <b>More Color Options Available See Page 6</b>            |                                 |
| <b>Factory Standard is a Low Iridescent Alzak® finish</b> |                                 |
| <b>Alzak® is a registered trademark of ALCOA</b>          |                                 |

### Accessories

|              |                                   |              |                    |
|--------------|-----------------------------------|--------------|--------------------|
| <b>ST277</b> | - Step Down Transformer (277:115) | <b>CB517</b> | - Caddy Bars (517) |
| <b>FS</b>    | - Fuse                            | <b>CB520</b> | - Caddy Bars (520) |
| <b>RM</b>    | - Old Work Remodeler Housing      |              |                    |



## PARABOLIC LOUVER REFLECTOR



Aperture: 7 1/2", Ceiling Cutout: 7 3/4", OD: 8 3/4"

### Housing

| Part #                       | Description               |
|------------------------------|---------------------------|
| <b>H800</b>                  | 8" 200W Max. Incandescent |
| <b>Suitable Lamp Types:</b>  |                           |
| <b>A19/A21/A23/PS25/PS30</b> |                           |

### Trim

| Part #  | Description                      |
|---|----------------------------------|
| <b>Parabolic Deep Cross Baffle</b>                        |                                  |
| <b>HXB810SPCL</b>   | Specular Clear Alzak® Reflector  |
| <b>HXB810SPGO</b>   | Specular Gold Alzak® Reflector   |
| <b>HXB810SPWT</b>   | Specular Wheat Alzak® Reflector  |
| <b>HXB810SPPW</b>   | Specular Pewter Alzak® Reflector |
| <b>HXB810SPUM</b>   | Specular Umber Alzak® Reflector  |
| <b>HXB810SPBL</b>   | Specular Black Alzak® Reflector  |
| <b>HXB810WH</b>   | Matte White Reflector            |
| <b>More Color Options Available See Page 6</b>            |                                  |
| <b>Factory Standard is a Low Iridescent Alzak® finish</b> |                                  |
| <b>Alzak® is a registered trademark of ALCOA</b>          |                                  |

### Accessories

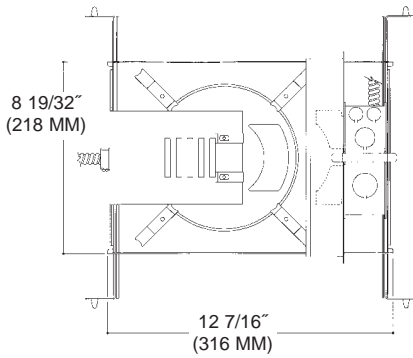
|              |                                   |              |                    |
|--------------|-----------------------------------|--------------|--------------------|
| <b>ST277</b> | - Step Down Transformer (277:115) | <b>CB517</b> | - Caddy Bars (517) |
| <b>FS</b>    | - Fuse                            | <b>CB520</b> | - Caddy Bars (520) |
| <b>RM</b>    | - Old Work Remodeler Housing      |              |                    |



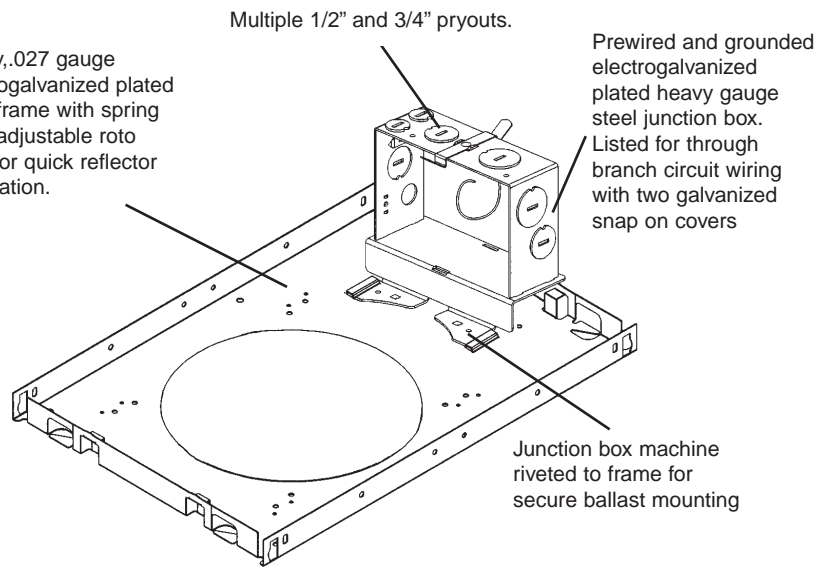
8"

Horizontal Incandescent (A-Lamp)

## 8" Horizontal Incandescent



Heavy, .027 gauge electrogalvanized plated steel frame with spring steel adjustable roto clips for quick reflector installation.



Multiple 1/2" and 3/4" pryouts.

Prewired and grounded electrogalvanized heavy gauge steel junction box. Listed for through branch circuit wiring with two galvanized snap on covers

Junction box machine riveted to frame for secure ballast mounting

### Frame Options

**CFM** - Custom Frame Modifications (*consult factory*)  
**SA\*\*** - Slope Ceiling Adaptor (White Finish Standard)

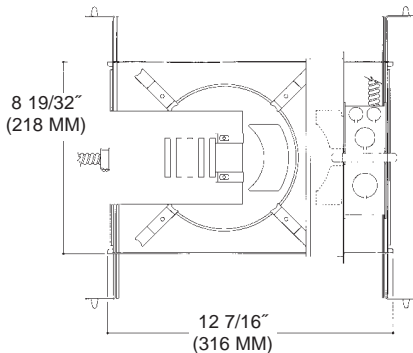
\*\* - specify slope degrees in 5° increments up to 45°

### Trim Options

**PFL** - Polish Flange  
**TLP** - Top Re-lamp Modifications  
**FGSK** - Flange Gasket  
**GR** - Goof Ring\*

\* - specify I.D. and O.D. standard white finish

## 8" Horizontal Incandescent



### Additional Product Info

#### Reflector

Single piece hand spun low iridescent Alzak® reflector with standard self trim flange and a white trim finish. 45° Lamp cutoff allows for a better visual cutoff than generally available.

High polish flange, white and black trim finish's available consult factory.

#### Socket

Aluminum, heat dissipating socket cup vertically mounts to reflector by means of a firm locking adjustable husk clip. UL Listed, porcelain medium base socket.

#### Frame

Prewired electrogalvanized heavy steel junction box listed for through branch circuit wiring with 1/2" & 3/4" pryouts. Electrogalvanized plated steel housing with adjustable spring steel roto clips allowing for a quick trim installation.

Thermally protected 120V thermal cutout factory wired.

Housing accommodates any ceilings with a max. thickness of 1 3/4"

Same housing accommodates an open, lens, or wall wash reflector.

### Frame Options

**CFM** - Custom Frame Modifications (*consult factory*)  
**SA\*\*** - Slope Ceiling Adaptor (White Finish Standard)

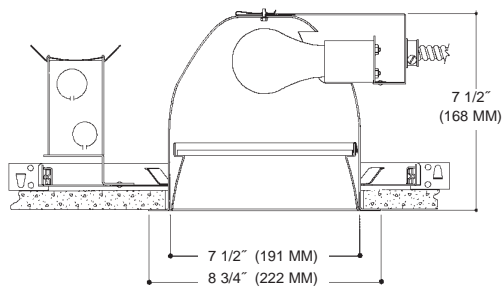
\*\* - specify slope degrees in 5° increments up to 45°

### Trim Options

**PFL** - Polish Flange  
**TLP** - Top Re-lamp Modifications  
**FGSK** - Flange Gasket  
**GR** - Goof Ring\*

\* - specify I.D. and O.D. standard white finish

## ENCLOSED LENS REFLECTOR



Aperture: 7 1/2", Ceiling Cutout: 7 3/4", OD: 8 3/4"

### Housing

| Part #                       | Description               |
|------------------------------|---------------------------|
| <b>H800</b>                  | 8" 150W Max. Incandescent |
| <b>Suitable Lamp Types:</b>  |                           |
| <b>A19/A21/A23/PS25/PS30</b> |                           |

### Trim

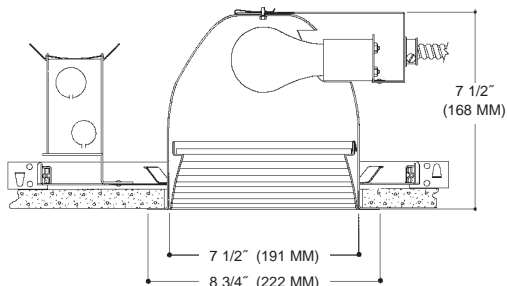
| Part #   | Description                               |
|--|---|
| <b>C73 Prismatic Lens</b>                                  |   |
| <b>H830SPCL</b>  | - Specular Clear <i>Alzak</i> ® Reflector |
| <b>H830WH</b>  | - Matte White Splay                       |
| <b>Fresnel Lens</b>  |   |
| <b>H832SPCL</b>  | - Specular Clear <i>Alzak</i> ® Reflector |
| <b>H832WH</b>  | - Matte White Splay                       |
| <b>Clear Lens</b>  |   |
| <b>H832SPCL</b>  | - Specular Clear <i>Alzak</i> ® Reflector |
| <b>H832WH</b>  | - Matte White Splay                       |
| More Color Options Available See Page 6                    |   |
| Factory Standard is a Low Iridescent <i>Alzak</i> ® finish |   |
| <i>Alzak</i> ® is a registered trademark of ALCOA          |   |

### Accessories

|              |                                   |              |                    |
|--------------|-----------------------------------|--------------|--------------------|
| <b>ST277</b> | - Step Down Transformer (277:115) | <b>CB517</b> | - Caddy Bars (517) |
| <b>FS</b>    | - Fuse                            | <b>CB520</b> | - Caddy Bars (520) |
| <b>RM</b>    | - Old Work Remodeler Housing      |              |                    |



## ENCLOSED BAFFLED LENS REFLECTOR



Aperture: 7 1/2", Ceiling Cutout: 7 3/4", OD: 8 3/4"

### Housing

| Part #                       | Description               |
|------------------------------|---------------------------|
| <b>H800</b>                  | 8" 150W Max. Incandescent |
| <b>Suitable Lamp Types:</b>  |                           |
| <b>A19/A21/A23/PS25/PS30</b> |                           |

### Trim

| Part #   | Description                       |
|--|-----------------------------------|
| <b>C73 Prismatic Lens</b>                                  |                                   |
| <b>H860BL</b>  | - Black Multi-Groove Baffle Splay |
| <b>H860WH</b>  | - White Multi-Groove Baffle Splay |
| <b>Fresnel Lens</b>  |                                   |
| <b>H862BL</b>  | - Black Multi-Groove Baffle Splay |
| <b>H862WH</b>  | - White Multi-Groove Baffle Splay |
| <b>Clear Lens</b>  |                                   |
| <b>H866BL</b>  | - Black Multi-Groove Baffle Splay |
| <b>H866WH</b>  | - White Multi-Groove Baffle Splay |
| More Color Options Available See Page 6                    |                                   |
| Factory Standard is a Low Iridescent <i>Alzak</i> ® finish |                                   |
| <i>Alzak</i> ® is a registered trademark of ALCOA          |                                   |

### Accessories

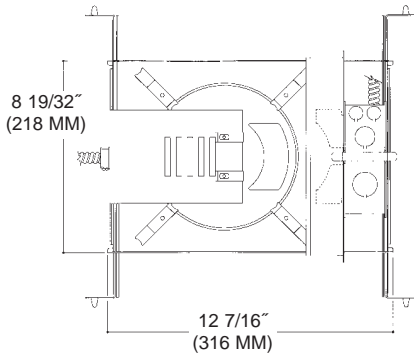
|              |                                   |              |                    |
|--------------|-----------------------------------|--------------|--------------------|
| <b>ST277</b> | - Step Down Transformer (277:115) | <b>CB517</b> | - Caddy Bars (517) |
| <b>FS</b>    | - Fuse                            | <b>CB520</b> | - Caddy Bars (520) |
| <b>RM</b>    | - Old Work Remodeler Housing      |              |                    |



8"

Horizontal Incandescent (A-Lamp)

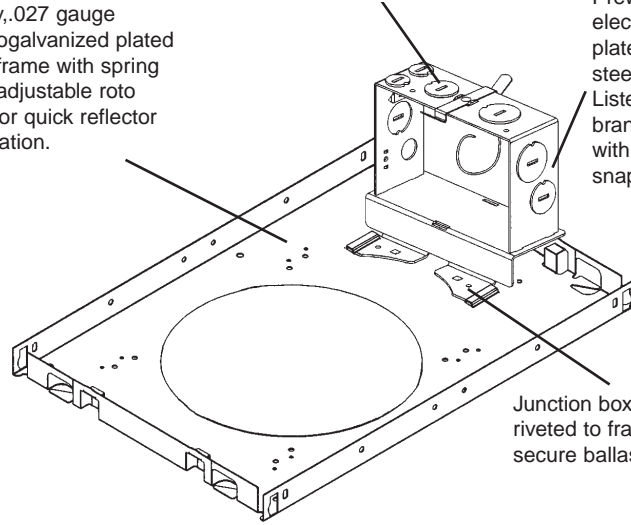
### 8" Horizontal Incandescent



Heavy, .027 gauge electrogalvanized plated steel frame with spring steel adjustable roto clips for quick reflector installation.

Multiple 1/2" and 3/4" pryouts.

Prewired and grounded electrogalvanized plated heavy gauge steel junction box. Listed for through branch circuit wiring with two galvanized snap on covers



Junction box machine riveted to frame for secure ballast mounting

#### Frame Options

- CFM - Custom Frame Modifications (*consult factory*)
- SA\*\* - Slope Ceiling Adaptor (White Finish Standard)

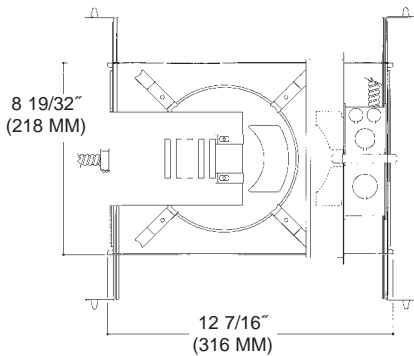
\*\* - specify slope degrees in 5° increments up to 45°

#### Trim Options

- PFL - Polish Flange
- TLP - Top Re-lamp Modifications
- FGSK - Flange Gasket
- GR - Goof Ring\*

\* - specify I.D. and O.D. standard white finish

### 8" Horizontal Incandescent



#### Additional Product Info

##### Reflector

Single piece hand spun low iridescent Alzak® reflector with standard self trim flange and a white trim finish. 45° Lamp cutoff allows for a better visual cutoff than generally available. High polish flange, white and black trim finish's available consult factory.

##### Socket

Aluminum, heat dissipating socket cup vertically mounts to reflector by means of a firm locking adjustable husk clip. UL Listed, porcelain medium base socket.

##### Frame

Prewired electrogalvanized heavy steel junction box listed for through branch circuit wiring with 1/2" & 3/4" pryouts. Electrogalvanized plated steel housing with adjustable spring steel roto clips allowing for a quick trim installation.

Thermally protected 120V thermal cutout factory wired.  
Housing accommodates any ceilings with a max. thickness of 1 3/4"  
Same housing accommodates an open, lens, or wall wash reflector.

#### Frame Options

- CFM - Custom Frame Modifications (*consult factory*)
- SA\*\* - Slope Ceiling Adaptor (White Finish Standard)

\*\* - specify slope degrees in 5° increments up to 45°

#### Trim Options

- PFL - Polish Flange
- TLP - Top Re-lamp Modifications
- FGSK - Flange Gasket
- GR - Goof Ring\*

\* - specify I.D. and O.D. standard white finish