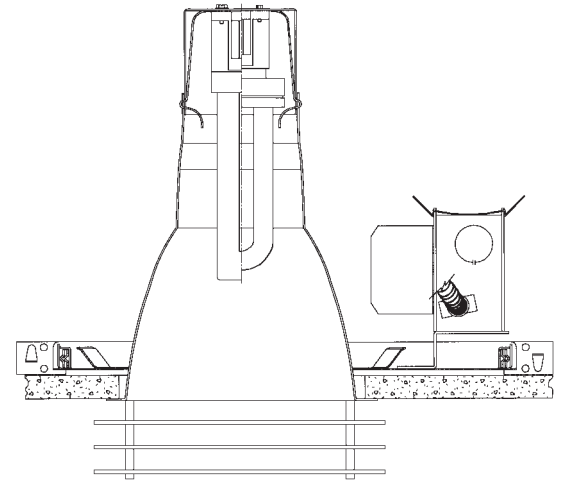
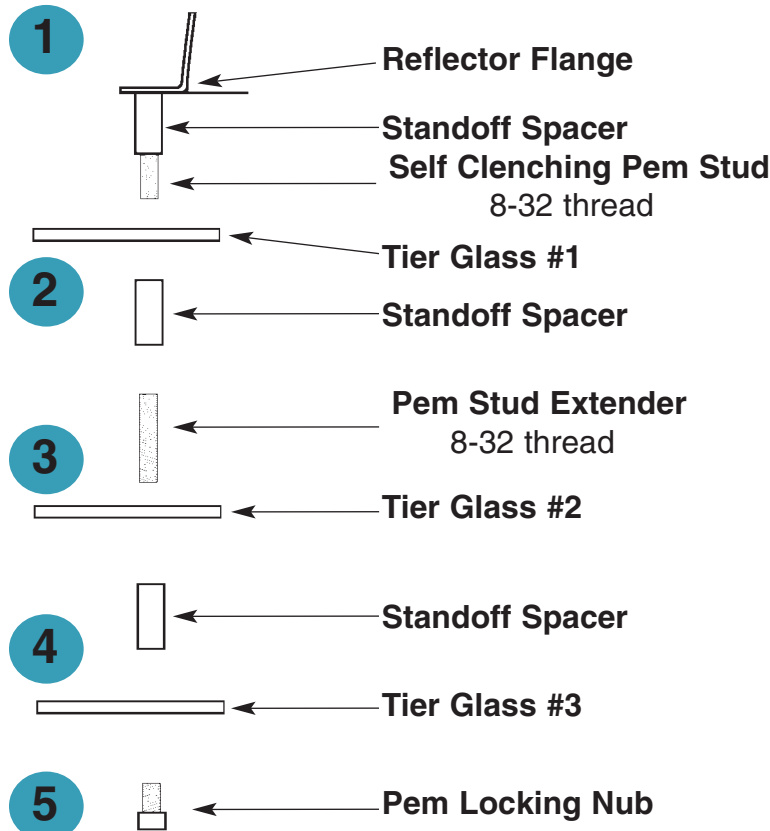




# ARCHITECTURAL STAR LIGHTING, LLC

## *Hanging 3 Tier Installation Instructions*



### **IMAGE 1**

- 1 Step 1** - Carefully drill three holes in the reflector flange in a hole pattern to match the tier glass. This hole has to accommodate the 8-32 pem stud. Slide the pem stud through each of the three holes and screw in the first spacer as shown on *Image 1*. Next, take a Standoff Spacer and screw it onto the protruding pem stud, careful to not over tighten.
- 2 Step 2** - When all three of the pem studs are secured to the reflector flange and the spacers tightened down, then take one of the tier glass rings and slide it onto the protruding pem stud to rest on the Standoff Spacer. After the tier glass is on take another Standoff Spacer and screw it down till tight. (*Careful not to over tighten*)
- 3 Step 3** - Next take the Pem Stud Extender and screw it into all three Standoff Spacer's. Make sure to bottom out the extender. After the Extender is in on all three extensions then take the second tier ring and slide it into place via the Pem Stud Extender.
- 4 Step 4** - Take the last Standoff Spacer and screw it down till tight. (*Careful not to over tighten*) Next line up the tier ring holes with the Standoff Spacers.
- 5 Step 5** - The last step is to take the Pem Locking Nub and slide it through the Tier ring holes and screw it into the Standoff Spacer. be careful not to over tighten or the glass might crack.